



Ashover
Community First

ISSUE no.1
2018/2019

Ashover Parish Council Annual Report 2017/2018



LOCAL COUNCIL
AWARD SCHEME
QUALITY

Working for the whole of the Ashover Parish
Website: www.ashover-pc.gov.uk



CHAIRMAN'S REPORT

Dear Parishioners,



I am writing this report following a winter which has been more severe than many recent ones. The Parish Council has endeavoured to play its part in keeping disruption to a minimum. This comes at a cost and the winter maintenance budget has been severely stretched.

Our various support groups, footpaths, tree group, Christmas event group and neighbourhood steering group have worked tirelessly to make and keep our parish the special place it is. I would like to extend a big thank you to all involved for giving their free time to the various groups.

I am pleased to announce that after several years of work the referendum for the Neighbourhood Plan was given resounding support. This document is an important protection for our parish, covering planning, environment, heritage and landscape. In the absence of a "Local Plan", this is the only document protecting our Parish and I would urge all parishioners to acquaint themselves with the document, which is available on the Parish Council website.

We now have six defibrillators situated in Ashover, Uppertown, Milltown, Alton, Littlemoor and Kelstedge; exact locations and further information is contained in this booklet. The code for their use is acquired via a '999' call to the emergency services. I would like to extend thanks to Ashover Community Medical Centre Ltd. for its financial support in this project. The commissioning was undertaken by a Member of the Parish Council, who gave their free time to achieve this. The units are visited weekly by our Lengthsman to monitor and record that they are functioning correctly.

The Parish Council is hoping to improve play for teens and this project is currently going forward.

On the 17 April 2018, Council Members met with the Police & Crime Commissioner for Derbyshire, Hardyal Dhindsa, and held a useful and informative question and answer session. Hardyal Dhindsa encouraged members of the public to share their crime and policing concerns and you can do this by visiting the PCC website:-

<https://www.derbyshire-pcc.gov.uk/Taking-Part/Listening-To-You.aspx>

CONTINUED ON THE NEXT PAGE...

The Clerk, as always, has had to keep abreast of the many Government directives that are coming into force. This involves attending training courses, which are necessary, but time consuming.

In an effort to streamline, we are currently in the process of adopting the use of electronic tablets for council business, thus saving on paper, ink and time.

As a council we are approaching the last year of office before the elections in 2019 and as Chairman, I would like to thank Councillors, sub groups and all those involved in keeping our parish special.

Councillor Ed Willmot
Chairman
Ashover Parish Council
April 2018

ALLOTMENTS

The allotments on Marsh Green are owned by the Parish Council and are presently rented by six parishioners.

ASHOVER LIGHT RAILWAY SOCIETY (www.alrs.org.uk)

Go to Google and type in "Ashover" and once you have scrolled past the commercial and paid for entries you will find the Ashover Light Railway as one of the first entries, yet it is over 60 years since Peggy and her sister locomotives made their way up and down the Amber valley conveying stone from Ashover to Clay Cross and day trippers in the opposite direction.

The Ashover Light Railway Society, a registered charity, is working to recreate the atmosphere of the heyday of the railway.

Our sales and publicity stall has put in appearances at Ashover show, Woolley Moor show, Ashover May Day as well as various events in neighbouring Clay Cross. We have been very happy to welcome and chat to visitors to our stall, especially those who have personal memories of the railway.

Our website (alrs.org.uk) and Facebook page record thousands of visitors from both the UK and overseas enabling us to spread information about the railway, its passengers, staff and freight.

Readers with long memories may remember the "Where the Rainbow Ends" cafe which formerly stood at Ashover Butts. (It was later dismantled, moved to Clay Cross and reassembled. With redevelopment taking place at Clay Cross the ALRS dismantled the cafe (again) and moved the parts into storage. Recently the society has engaged the services of specialists in wooden buildings to produce a CAD simulation of how the cafe could be rebuilt. This could form the basis of a submission for Heritage Lottery funding. Watch this space!

May 2017 saw the Society invited to a gala at the Festiniog Railway in North Wales. We attended, together with a restored locomotive (Spondon, not a survivor of

the Ashover railway) and drove across the Cob into Porthmadog station in front of thousands of onlookers.

The society would welcome further volunteers to continue our works, and also any photographs or artefacts from the railway.

ALRS PUBLICITY OFFICER.

ASHOVER COMMUNITY MEDICAL CENTRE LTD

The Trustees continue to manage and maintain the Ashover Medical Centre building, with their main focus being the continued existence of the Primary Care Service for the benefit of the local community, together with the provision of funding for education and community events, both individual and groups.

Parishioners are reminded that the Trust was set up by the community, and it is the community who are able to benefit from it.

As a guide, during this year the Trust has supported many projects. One such has been the continued funding of defibrillators, which, in partnership with the Parish Council, have been placed at strategic places around the Parish. The Trust has also supported the Mayday Carnival, the Parish Party, Ashover Cricket, Football and Netball, as well as the Ashover OAP group, and numerous other causes which fit the Trust objectives.

So don't be afraid to ask for help! The Trustees will consider requests for help with group projects, or extracurricular educational and recreational activities for individuals, all which fit well with the Trust objectives.

Contact one of the Trustees – Jacqueline Collins, Andrew King, Ed Willmot or Philip Clark on 01245 590356.

ASHOVER SHOW 2018

The 87th Ashover Show will be held on Wednesday 08 August 2018 on The Rectory Fields, Ashover S45 0BA. The Show is very proud of its reputation as one of the finest traditional agricultural shows in the country and regularly welcomes over 14,000 visitors

each year and offers an enjoyable day out for the whole family. For up to date information on the show and all of the contact details plus class schedules, please visit our web site at www.ashovershow.co.uk. Advance tickets are available to purchase on line at a reduced price to those on the day and we very much look forward to seeing you.

ASHOVER SHOW SECRETARY

CEMETERY

The Ashover Parish Cemetery is a place used by many to remember their loved ones. It is a place of peace and tranquillity and the Burial Board are dedicated to maintaining the area in a manner that is sympathetic to the surroundings.

The main cemetery wall has received further attention and a length has been repointed to maintain its structural integrity. Replacement windows have also been sourced and installed in the cemetery shed.

Woolley Moor Nurseries, a locally based contractor, has undertaken the general maintenance over the past year and will continue the contract for a further year. After this time the contract will be re tendered in accordance with Parish Council Policies. Under a separate contract we continue to weed kill the paths and borders to maintain their functionality.

In addition Community Service has been utilised to assist in clearance of debris and raking of paths to prevent moss formation. The digital updating of the burial records continues and further details have been added into the database to allow efficient use of records. Once this is completed and is operating smoothly, old burial registers will be submitted to Derbyshire County Council for safe storage in the archives.

In April 2017 we inspected the safety of all memorials in line with Memorial Safety Policy. A number of potentially unsafe monuments were identified and the responsible beneficiaries were written to give the opportunity to make repairs. Failing necessary repairs being performed the Burial

Board will re inspect and take necessary actions to make safe.

A 'Fees and Charges' list and other documentation for the cemetery may be found on the Parish Council's website at www.ashover-pc.gov.uk.

Cllr Chris Miller

CHAIRMAN OF THE BURIAL BOARD

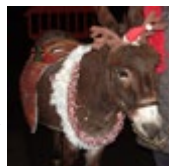
CHRISTMAS LIGHTS SWITCH-ON 2017

This year the switch-on was carried out by our new MP for NE Derbyshire, Lee Rowley, in front of a huge crowd of around 400 people, ably assisted by the Town Crier, Merrick Bull. That part of the ceremony completed, everyone then filed into the Church with Maude the Donkey and played in by Ashover Brass band. The second part of the evening started with a piece sung by the Church choir, followed by carols and refreshments until finally, to the delight of the children, Father Christmas suddenly appeared from the rear of the Church and took his place in the grotto; a queue of excited children quickly formed. The band serenaded us all with Christmas music until eventually all the children had spoken to Father Christmas and the crowd then slowly dispersed.



Many thanks go to the Parochial Church Council for allowing us to use the Church, to Lee Rowley MP for agreeing to switch on the lights, to Merrick Bull for his virtuoso performance as the Town Crier, to Father Christmas, his elves and the helpers of this year's event, and to Ashover Brass Band and the choir, all who helped to make it such a success.

Thanks to Ashover Parish Council for continuing to



support this event and a special "thank you" goes to Ashover Community Medical Centre Ltd who, annually, makes a generous donation towards costs.

CHRISTMAS EVENT VOLUNTEER GROUP

COMMON LAND

Your Council continues to monitor common land, carrying out maintenance where necessary. Parish Council approval has been given for some trees on common land to be managed by the Tree Working Group.

COMMUNITY CAR SCHEME

A community car scheme that commenced in March 2013 covering Ashover Parish, has proved very popular for residents denied the use of a car to get to Hospital, Doctors, shops etc. Ashover is a very large Parish with minimal bus and taxi services and large distances with many remote dwellings to cater for. The scheme now covering Chesterfield, Ashover and Amber Valley is supported by the NHS, Derby City and Derbyshire County Council, CT4TC Community Transport for Town and Country. For more information telephone the booking line on 01773 746652.

COMMUNICATION

If you wish to report on events within the parish to the local press, this can be done via the "Grass Roots" section of 'The Derbyshire Times' by e-mailing: grassroots@derbyshiretimes.co.uk.

COUNTY/DISTRICT COUNCIL LIAISON MEETINGS

County/District/Parish Liaison meetings/events are held during the year, with presentations and liaison on various issues. Your Parish Council is represented at these meetings.

CRICKET CLUB

The 2017 season was a mixed bag for Ashover CC with our senior Saturday teams both finishing a slightly disappointing mid

table but our Sunday teams both finished in very creditable positions in their respective sections. The Ashover Casuals midweek team enjoyed a very good season winning the vast majority of their matches.

Our junior section continues to prosper with Ashover CC providing the opportunity for over 100 youngsters aged between 7/15yrs to play competitive cricket.

There seems to be an alarming downturn in the numbers of youngsters taking up cricket with many local teams finding it difficult to find the numbers necessary to run teams.

Ashover CC continue to buck this trend in many respects although numbers at our Friday night Kwik cricket were slightly down last year so we will be working hard in the coming weeks to try and rectify this. Ashover School as always were fully supportive of the Kwik cricket and we remain extremely grateful for their continued support.

Ashover CC are proud of our roots as a village cricket club and as such will always need the support of the local community and the Parish Council and together with the dedication and commitment of our members I confidently predict good times ahead for what is a very special cricket club.

Chairman

ASHOVER CRICKET CLUB

DEFIBRILLATORS

Ashover Parish Council has installed six defibrillators at the following locations:-

- *Outside Uppertown Social Centre
- *Outside the medical centre in Ashover
- *In the red kiosk at Alton
- *In the red kiosk at Littlemoor
- *On the side of The Miners Arms, Milltown
- *On the side of The Kelstedge Inn, Kelstedge

Thanks go to Ashover Community Medical Centre Ltd. that has worked in partnership with Ashover Parish Council and supported the cost of the units via grant aid.

If you need to use a defibrillators remember - In an emergency, Dial 999 and you will be given the code to the cabinet and further instructions.

If you would like to know more about how the defibrillators work, visit the parish council website and put 'defibrillator in use quick reference guide' into the search box at the top right-hand corner of the homepage or paste the following link into your browser:-

<http://www.ashover-pc.gov.uk/uploads/ipad-sp1-in-use-quick-reference-guide-a4-for-web.pdf>

DOG MESS

Dog mess is unfortunately an unpleasant aspect of dog ownership. It is every owner's duty to clean up after their dog – there is no excuse for leaving it behind.

North East Derbyshire District Council is committed to ensuring that dog owner's act in a responsible way.

IT IS AN OFFENCE TO FAIL TO CLEAN UP AFTER YOUR DOG AND COULD RESULT IN A FIXED PENALTY NOTICE OF £50.00 OR PROSECUTION AND A FINE OF UP TO £1,000.00.

Why clean up after your dog?

- Dog mess is unsightly, unpleasant, and smelly!! (even more so if trodden in and walked into your home)
- Dog mess is unhygienic and may cause severe health problems, especially for children.
- Responsible dog owners reputations are damaged by the minority of dog owners who do not clean up after their dog.

A guide to being a responsible owner:

- **Always carry a means to clear up after your dog**
Poop bags can be purchased from most supermarkets and pet shops. An ordinary plastic bag will do if nothing else is available.

- **Dispose of your poop bag correctly**
Use a dog bin where possible, failing this, use an ordinary litter bin or take the bag home and bin it there.

- **If you have a garden**
Train your dog to go there before you leave home – this way you can bag it and bin it straightaway.

- **Never let your dog out alone to do its toilet**

As well as being an offence your dog could stray and you may incur further expense to get it back.

- **Encourage other dog owners to act responsibly**

Do not be rude or aggressive – simply offer them one of your poop bags. Embarrassment gets better results than abuse.

Some people will continue to be irresponsible, and there are an increasing number of dog owners who clear up after their dog THEN leave the bag on a tree or bush, or throw it on the ground.

If you witness dog owners not picking up after their dog or disposing of their poop bags as described above, report them to us. Your call will be treated in confidence.

Report Irresponsible Owners

If you decide to make a complaint about dog fouling, please ensure you supply as many details as possible in order for us to take action:

- Name and address of dog owner if known.
- If name/address not known - description of the person(s) and the dog(s)
- If they arrived or left in a vehicle - description and registration of the vehicle.
- Location of dog fouling or poop bag
- Time (VERY important – we may be able to catch the person the next time – most dog walkers follow a similar daily routine)

North East Derbyshire District Council enforcement staff carry out dog fouling patrols throughout the district, but we need YOUR help to make the district a safer, cleaner and healthier place to live.

To contact us you can telephone the NEDDC customer contact centre on 01246 231111 or by e-mail to envhealth@ne-derbyshire.gov.uk

DONATIONS/GRANTS

During 2017/18 your Parish Council donated £1,217.99 to community causes as follows:-

- Ashover Lunch Club - £200.00
- First Ashover Brownies - £30.00
- Tree Working Group - £36.36
- May Day Carnival (APCC) - £100.00
- Ashover Old Peoples Association - £50.00
- Ashover Acorns - £50.00
- Church Choir - £25.00
- Christmas Event (APCC) - £50.00
- Ashover Brass Band - £25.00
- Christmas Event - £134.63
- Church Clock & Graveyard Maintenance - £517.00

EASTWOOD GRANGE

It gives me great pleasure and is a privilege to introduce myself as head teacher at Eastwood Grange School. Since arriving at the school in late January, I have been made to feel most welcome.

Eastwood Grange was founded in 1990 as both a residential school and children's home and was acquired by Priory Group in 2003. We have continued to build our strong reputation for providing high quality education and care. We provide local education authorities and social services departments in the region with a flexible service, offering education for boys aged 9 – 19 years exhibiting a variety of behavioural, emotional and social difficulties, and additional educational needs.

We are in a developmental phase, having already closed our residential provision

on site, anticipating an increase in student numbers and completion of the site's refurbishment to accommodate an intake of younger primary aged students by September 2018. We are also looking forward to becoming a co-educational school.

The School continues to build upon its 2015 Ofsted inspection when we were graded as 'Good' by Ofsted in all areas. We are aiming to be outstanding by the time of the next inspection.

Our young people enjoy a warm, welcoming and relaxed, yet structured environment, which encourages them to develop social, educational and practical skills and enjoy an active and fulfilling life in beautiful surroundings.

By the end of their time at Eastwood Grange students should:

- be visibly more settled in terms of mental health
- have a genuine curiosity about the world and their place in it
- be among the first placed in education, training or employment on their own merits
- be on track to achieve or exceed expectations of progress
- sustain an interest or hobby in a non-academic area
- be supported to succeed in their next phase, including access to adult services
- maintain a record of achievement to capture success

I have held a variety of posts, both in education and industry. Most recently, my 19 years in education have led to positions such as Director of Science at Humber UTC and running both secondary and Post-16 education at the Royal School for the Deaf, Derby. The latter allowed me to lead improvements in both provisions adjudged by both OFSTED and students outcomes.

Each and every member of the Eastwood Grange staff team is passionate about the quality of service we provide for our young people.

The school continues to support the local

community through the use of our sports barn for activities involving Ashover Junior Football and Ashover Cricket clubs.

In addition to collaboration such as this, I am personally keen to develop strong links to help organisations deliver on the increasingly emerging mental health agenda, particularly within mainstream education.

I look forward to building relationships within the Ashover community, sharing success with you in the coming months and working with you to make it a reality. In the meantime, should you wish to contact me to discuss our partnership, I welcome this.

Head Teacher

EASTWOOD GRANGE SCHOOL
ericknutsen@priorygroup.com
01246 590255

EMPLOYEES

Your Parish Council employs two people: Parish Clerk/Responsible Financial Officer/Burial Clerk (23 hours per week), Parish Lengthman and Sports Pavilion Caretaker (13 hours per week).

FOOTPATH AND BRIDLEWAY GROUP

FOOTPATHS - Much work goes into the care of local paths and bridleways and by a variety of people! This year we have struggled to maintain the status quo but we have also made improvements. The separate bridleway report points very much in this direction.

This year, there has been a noticeable reduction in the support given by the Countryside Service. Reduction in staff numbers has led to their input being mainly restricted to County Council sites. In Ashover this means: The Fabric, Eddlestowe Lot and Highoredish. Volunteers also help on these sites and there was particular support for a volunteers' day at Highoredish. There have been no replacements of rotten finger post signs in the Parish this year. Some posts are now shorter but at least they are still there..! On a more positive note, the Council has agreed to a diversion of the path from the

Matlock main road to the Peak Edge Hotel and made sure it is of high standard and protected from vehicles in the hotel car park. Thanks too for the co-operation of the owners of the land.

A multitude of people have helped to keep the network of paths open and in a reasonable state:

Walkers and riders (and horses!) keep much overgrowth down, just by trampling. Special thanks to the walkers, who leave the Post Office at 6.30 p.m. every Tuesday. The shorter route walkers leave the same spot every Tuesday at 9.30 a.m. and do an equally valuable job.

Landowners respect the line of the paths and provide new stiles and gaps where possible. For instance, near St Martin's Farm above The Butts.

Bolsover Woodlands Enterprise, who support adults with learning difficulties to resource and make countryside furniture. There are now 11 of their benches in The Parish. The latest two are on The Fabric and between Vernon Lane and Eaton Lane.

Local volunteers from Ashover and Clay Cross Parishes have maintained parts of many paths. They have also repaired the old slab wall near Overton Hall.

Peak and Northern Footpath Society has provided metal direction signs in The Butts, by The Black Swan and off Highashes Lane. They are also working to provide a bridge across the stepping stones in Butts Quarry, which are often covered by The Amber. They have the money for the bridge but need to convince The County Council that they should provide long term maintenance.

The Ramblers, who continue with work on various parts of the network and have replaced the stretch of wooden boardwalk near Yewfield Farm, Spitewinter.

Our special thanks go to The Stephensons, who have held the footpath contract from The Parish Council for many years and provided tireless effort and care for the community. The new contract holder is Tom Cartwright (garden landscape and

maintenance).

It is time for some new blood to join the committee! There is always plenty to do in this most beautiful of parishes, as the seasons bring their differing challenges if you'd like to join please telephone 01246 590786. We also look forward to the 'lost' highway linking Alicehead Road and Darley Road to be open to walkers and riders in the not too distant future.

CHAIRMAN FOR ASHOVER FOOTPATH &
BRIDLEWAY GROUP

BRIDLEWAYS - As a voluntary access and bridleway officer for the British Horse Society and co-founder of Matlock and District Bridleways Access Group (MADBAG), I am very much involved in improving and extending the bridleway network throughout this parish and surrounding areas. Country roads are getting busier as I'm sure most people are aware and the creation of link paths together with the upgrading of footpaths where appropriate is MADBAG's main priority. This then gives all vulnerable users; cyclists, disabled users, equestrians as well as pedestrians, a safe network of traffic free paths. If you are an equestrian/cyclist please consider joining MADBAG to receive reports on routes that we are working on with bi-monthly meetings available for members to put forward suggestions. There is a one off joining fee (£10 for an adult). Please see the webpage: www.madbag2013.wordpress.com

If you are a landowner and think you could provide access across your land be it a link path avoiding busy roads or even a longer route, we do have access to funding and would love to hear from you. Please contact either: madbag.2013@gmail.co.uk or kjhaywood@btinternet.com. To encourage responsible driving/riding on our lanes, I have a supply of the BHS 'Dead or Dead Slow?' posters from the 'THINK!' road safety campaign together with leaflets from GEM Motoring Assist aimed at helping equestrians and drivers understand each other's situation

on the roads. Again, please contact me if you would like any of these items to display/distribute.

SECRETARY FOR ASHOVER FOOTPATH AND
BRIDLEWAY GROUP

GENERAL DATA PROTECTION REGULATIONS (GDPR)

Personal data is information relating to an identifiable living individual. Whenever personal data is processed, collected, recorded, stored or disposed of it must be done within the terms of the Data Protection Act (DPA). The DPA and other information rights laws set out your rights regarding your personal information, how organisations should carry out direct marketing and how you can access information from public authorities. Data protection law changes on 25 May 2018. The law on data protection says what you should do when you collect, use, store or do anything else with people's personal data. The changes reflect the realities of the digital age and the need for people to take more control over their personal data. Your Parish Clerk has attended training on the GDPR and will be implementing changes to the administration system in order to comply with the new regulations.

GRIT BINS

Your Parish Council owns and fills a total of 37 grit bins sited around the parish and undertakes winter maintenance of the Milken Lane Car Park.

The salt is supplied for use on the highway adjacent the bin and if you witness large amounts being taken for personal use, please contact the Police.

GROUNDS MAINTENANCE

The maintenance contract with North East Derbyshire District Council continues and includes maintenance of the playing field, borders surrounding the car park, play area and tennis courts, statutory monthly and annual safety inspections. Pitch bookings

administration continues to be undertaken by NEDDC. Your Parish Council approved a 5 year contract with NEDDC, commencing 2016/17 at £11,887.72 and thereafter subject to a cumulative 1.25% increase year on year ending 31/03/2021.

HARD COURTS AND SPORTS PAVILION

Details of Hire Charges for these facilities are available from the Parish Clerk, on the courts' notice board and on the Parish Council website at www.ashover-pc.gov.uk

LITTER PROBLEM ON COUNTRY ROADS

Littering is a nationwide problem and 20 years of poster campaigns, TV adverts and voluntary agreements have had little effect on littering behaviour. The annual cost to the UK tax payer for clearing up litter and fly tipping is £1 billion. One initiative that is proven to lead to a significant reduction in littering is a 'Bottle Bill' with a 10 pence refundable deposit on drink cans and plastic bottles which make up the highest proportion of cast aside containers. In countries that adopt this practise, littering has been reduced by up to 70%. Despite lobbying by groups such as the Campaign to Protect Rural England, this is not even on the Government's radar. Some of the problems caused by littering are:

- Damage to vehicle tyres.
- Harm to wildlife, farm animals and pets – the RSPCA receive on average 7,000 calls a year in relation to animals injured by litter.
- Drain blockages.
- Rat infestation.

In towns and cities the council is obliged to clear problem areas of litter but in rural areas councils don't have the resources to clear miles of country roads – research has shown that one mile of road can contain 147 items of litter. Where communities have taken the initiative and formed groups of volunteer litter pickers 'adopting' a section of road each to keep clear, this has had a big impact on reducing littering and gives the volunteers

a real sense of purpose. Please take a look at the CPRE website and litterheroes.co.uk.

LOCAL COUNCIL AWARD SCHEME

The Local Council Award Scheme exists to celebrate the successes of the very best local councils, and to provide a framework to support all local councils to meet their full potential. All local councils want to serve their local communities and make a real difference to the lives of the people that live there. The scheme offers councils the opportunity to show that they meet the standards set by the sector, assessed by their peers, and to put in place the conditions for continued improvement.

The Award Scheme has been designed to both provide the tools and encouragement to those councils at the beginning of their improvement journeys, as well as promoting and recognising councils that are at the cutting edge of the sector. It is only through the sector working together to share best practice, drive up standards and supporting those who are committed to improving their offer to their communities that individual councils and the sector as a whole will reach its full potential.

Your Parish Council achieved 'Quality' status under the new scheme in February 2017.

LOCAL HOUSING Rykneld Homes

This year Rykneld Homes, in partnership with North East Derbyshire District Council, is delighted to be offering more choice and opportunity for people looking for a home in North East Derbyshire.

We have developed brand new properties across the district at Wingerworth, Calow, Stonebroom and North Wingfield and have exciting plans for Dronfield town centre. Our new build programme has seen us developing properties for rent, to buy and on a Shared Ownership basis and details about the homes and the offers available can be found on our website at www.rykneldhomes.org.uk or call the Shared Ownership Shop on

0330 113 3700.

At the beginning of the year we were very proud to win the Training Award in the Building Communities in the East Midlands Awards – which showcase best practice in both the private and public sectors in our region. We were also named runner-up for Social Housing Provider of the Year. We believe investment in staff and training is key to providing high quality services so we were very pleased with our 2017/18 Customer Satisfaction Survey results which for the second year running returned a 94% satisfaction rating.

We would like to thank all our customers who filled in and returned the survey and want to encourage you to fill in this year's survey which will be sent out with the Summer edition of Your Rykneld magazine. Your responses and comments are used by us to strengthen our service delivery and help us to maintain our high standards.

In April our Housing and Support staff were in Ashover for the quarterly estate walk-about which is an opportunity for customers to meet with Rykneld Homes and partner organisations and discuss any issues about the estate or neighbourhood. Check out our website at www.rykneldhomes.org.uk for future walkabout dates and to find contact details for your Housing and Support Officer. We also place information on Twitter:

@Rykneld_Homes

We look forward to another successful year at Rykneld Homes and providing good quality homes that meet the needs and aspirations of our customers.

Communications Manager

RYKNELD HOMES

Pioneer House, Mill Lane,

Wingerworth, Chesterfield, S42 6NG

jill.ward@rykneldhomes.org.uk

01246 217549

MAY DAY CARNIVAL - 1st May 2017

The Crowning of the May Queen & Garland King was by Richard Felton and his daughter, Catherine with her new baby.

The huge colourful parade was led by Ashover Brass Band and crowds gathered again to see the ceremony of the crowning & later were entertained by Maypole dancing by Ashover Brownies, Chesterfield Garland Dancers, Ripley Morris Dancers, Ashover Brass Band, Honeybellies Choir, Hallam String Quartet, Ashover School Choir, Mummers Play, Carlo Thee Clown, Punch & Judy, escapology and a wonderful fun run for all the family. There were over 40 stalls raising money for their organisations.

This established event is hugely supported year after year and hopes to continue to provide a real family day out.

Cllr Mrs Rosemary Early

NEIGHBOURHOOD PLANS

The 8th February 2018 saw the approval of the Ashover Parish Neighbourhood plan by a majority of 509 votes for and 40 against, a copy of which can be found at <http://www.ashover-pc.gov.uk/neighbourhood-plan.html>. This was the culmination of over three years hard work by all associated with its production.

This represents a milestone for the Parish which gives the community a much greater say in how things will be shaped in the future, the most important of which is how and where development will take place within the Parish.

It does cover other aspects of life in the Parish including, among other things, Jobs and Economy, Community Facilities and Shops, Design and Build Heritage, Environment and getting around the Parish.

I would like to express my thanks for the help and support we have received from the Parish Council, along with individuals and groups within the Parish.

We have received grants from the Parish Council, Locality, Groundworks UK and Awards for All and without this financial support the whole cost would have fallen on the Parish.

My thanks go to the members of the

steering group: - Chris Proctor Smith, Anne Wilkinson, Michael Philbin, Ellen Hardwick, Martha Haywood, William Armitage and Sandy Bull. Thanks to our consultants, Your Locale, headed by Andrew Towlerton and Rachel Robson. Finally special thanks to the Parish Clerk, Sara Atkinson, without whose help and support the production of this plan would have been much more difficult.

Cllr Richard Fidler

CHAIRMAN

NEIGHBOURHOOD PLAN STEERING GROUP

NEDDC Councillor William Armitage, Ward Member for Ashover

I was elected with a clear mandate to represent all Parishioners irrespective of what political allegiance they may hold, also to stop inappropriate development. This has been difficult to achieve due to the fact that there was no Local Plan which had been allowed to expire in 2011. It appears that every developer would wish to obtain Planning Permission before any restrictions were placed on them. The consequence of this was that the Planning Department became overwhelmed and was forced to use outside consultants in order to process all the applications. This added to the cost which will have to be borne by the council tax payer. The District Council was named as one of fifteen in the Country who had failed to produce a local plan. They were warned that if they did not do so within a specified timeframe, the Government would appoint an outside body to do this. The Council heeded this warning. It can now demonstrate a seven year housing supply and the Local Plan should be in place by 2019 but will have to pass inspection. We have a Neighbourhood Plan and when assessing planning applications they have to adhere to any requirements stated in it. The emerging Local Plan has stated that anymore development in Ashover is not sustainable, so hopefully this will help stop anymore inappropriate development. In my capacity as your elected Councillor, I serve on five Committees. I

am also a member of the District Shadow Cabinet with a responsibility for planning and therefore recent activity has proved to be challenging. I am a serving Parish Councillor, a member of the Derbyshire Association of Local Council's Executive Committee and a member of the Ashover Community Medical Centre's Patient Participation Group. At the moment I am trying to resolve the parking problems at Westedge Close in Kelstedge and also in Littlemoor. Trying to arrange for three or four participants to meet is proving to be a daunting task but I will continue to push for an amicable result.

William Armitage

DISTRICT COUNCILLOR

NEDDC LOCAL PLAN 2014-2034

For up to date information on North East Derbyshire District Council's Draft Local Plan 2014-2034, please visit the NEDDC website at www.ne-derbyshire.gov.uk

NEWSLETTERS

Your Parish Council issues four Newsletters per year, the first of which is the Annual Report of the Parish Council which is circulated to every household in the parish and published on the website. The other three Newsletters are circulated as widely as possible around the parish, in the Information Point, on the Parish Council Notice Board, Medical Centre, Parish Hall, Uppertown Social Centre, shops, Post Office, website etc. If you have difficulty in obtaining a copy, please contact the Parish Clerk.

OIL BUYING SCHEME

OFF THE GAS GRID? SAVE MONEY ON YOUR OIL BUYING COSTS

Rural Action Derbyshire (RAD) is a charity set up in 1924 to support rural communities in Derbyshire. One of their current projects is running a community bulk oil buying scheme.

Oil prices are extremely low at the moment which is good news for oil users. RAD can

make cheap oil even cheaper through this bulk buying scheme.

The scheme is open to anyone using Kerosene28 for their heating – households, businesses or community buildings.

There is NO registration or annual membership fee. The scheme is run online where members can register, order and pay for their oil. If you are one of the 20% of rural Derbyshire that do not use a computer or have reliable access to the internet then you can manage your account through the Project Manager at RAD.

There is no obligation to buy your oil through the scheme, you can dip in and out of it depending on your needs. RAD will always be able to negotiate a better oil price than you would be able to arrange with a supplier in the same period due to the quantity they are negotiating with.

RAD orders oil once a month on behalf of their 'members' and negotiate with up to 8 oil suppliers for the best possible price.

Deadline day is always 12 noon on a Tuesday. Payment is taken the following day, delivery is within the following 10 working days.

For more information on the scheme please contact the Project Manager, Emma Simpson at RAD on 01629 592970 / 0845 313 8800, email oil@ruralactionderbyshire.org.uk or visit the RAD website: www.ruralactionderbyshire.org.uk/oil

**Rural Action Derbyshire, Town Hall,
Bank Road, Matlock, DE4 3NN.
Charity No: 1061531.**

PARISH APPEARANCE/ MAINTENANCE

The flowerbeds adjacent 'The Black Swan' and the public toilets are maintained under contract for the Parish Council. The Lengthman continues to pick litter around the parish with the help of volunteers and reports on fly tipping, carries out general maintenance on parish owned street furniture and undertakes health and safety inspections on Parish owned property and cleaning of

the Public Conveniences on Moor Road, Ashover.

PARISH COUNCILS AND MEETINGS

Parish councils and parish meetings work towards improving community well-being and providing better services at a local level. Their work falls into three main categories:

- representing the local community;
- delivering services to meet local needs; and
- striving to improve quality of life in the community.

Through a range of powers, parish councils provide and maintain a variety of important and visible local services including allotments, bridleways, burial grounds, bus shelters, car parks, commons, community transport schemes, crime reduction measures, footpaths, leisure facilities, local youth projects, open spaces, public lavatories, planning, street cleaning, street lighting, tourism activities, traffic calming measures, village greens and litter bins.

Residents are welcome to attend and speak at Parish Council Meetings under the 'Public' section. Parish Council Meetings are held on the third Tuesday of every month (except August when no meeting is held) in The Sports Pavilion, Milken Lane, Ashover. Public Speaking is invited for the first fifteen minutes of every meeting, when anyone from the parish may raise any issue with the Parish Council. A copy of the Agenda, together with notification of planning applications, Parish Clerk's Report, Minutes of the previous meeting and other information may be found on the Parish Council website: www.ashover-pc.gov.uk and the main notice board on Moor Road. A summary of each meeting is published 'The Derbyshire Times' "Grassroots" section and is also available on the Parish Council website along with other press releases.

PARISH COUNCIL SURGERIES

These are presently held at 7.00pm for fifteen minutes prior to every Parish Council Meeting. Parishioners are encouraged to attend and express any concerns they may have on parish issues to a Parish Councillor and the Parish Clerk if they are unable, or do not wish, to attend and speak at the main meeting.

PARISH HALL

We would like to thank the local community, our regular hirers and trustees for their continued support over the last year. We've had a busy year with our function rooms being chosen to hold a wide variety of events and regular classes, some of which you also may like to join yourself!

Fitness and dance classes currently held with us include Yoga with Jenny Meadows. Jenny's daughter Carrie Meadows has also started a new 'Beginners Hatha Yoga' Mondays at 2pm. Karate with Mike Douglass and Kathleen Cresswell's Social Dance Class are both held on Monday evenings.

Pilates with Liz on Tuesday evenings has literally gone from strength to strength! A new day time class is now being held each Tuesday at 10:30am.

New courses are being held by WEA (Workers' Educational Association) and Lynne Pope's Spanish Class. Other regular groups include Produce Club, Derbyshire Smallholders, Badminton, Indoor bowls, Parish Panto, Ashover Old People's Association, W.I. and Young Farmers.

There's lots for the little ones with Ballet & Theatre Dance Class Tuesdays at 4pm plus Wednesday morning's 'Tots & Tinies' where parents and carers have a well-deserved cup of tea whilst the children have a wide variety of toys, organised activities and songs to keep them busy!

For the older children - we were delighted to welcome Ashover Brownies to the hall. This friendly group now meet weekly at 6pm (term time) in our Amber Hall, followed by Guides at 7pm. The Brass Band's training band meet

6:30pm on Sundays followed by the main band. All groups are currently looking for new members.

For those with a creative flair - the Village Art Group meet on alternate Wednesdays at 6:30pm. Also, Jonathan Moseley who is one of the UK's leading designers in the floral art world has many classes and workshops booked through the year.

We would be happy to provide you with further information on any of these existing groups, as well as offering advice and assistance with marketing should you wish to start a new class yourself.

Please take a look at our new website www.ashoverparishhall.com which provides clear pricing and information on hiring the hall, a photo gallery for inspiration with your own event, with a new online calendar facility to check the availability of our function rooms. The Parish Hall's toilet facilities have recently been refurbished, now including modern vanity units and accessories. We thank all hirers for their patience whilst the refurbishments were being completed and hope you are as pleased with the results as we are.

This year we hosted theatre events by High Tor Players, Gilbert & Sullivan Society Choir and Smiffy Music as well as many wonderful weddings, birthday and anniversary celebrations.

If you would like our help to create the perfect event or celebration, please get in touch:

Tel: 01246 590005

Email: info@ashoverparishhall.com

Website: www.ashoverparishhall.com

Manager

ASHOVER PARISH HALL EVENTS CENTRE

PARISH PANTOMIME & PARTY 2018

PARISH PANTOMIME - "Aladdin & his Wonderful Lamp" showing on Thursday 11 January, Friday 12 January and Saturday 13 January 2018. These three performances attracted approximately 600 people. Pantomime is very popular with the parish, and each night the audience contribution was enormous and fun was had by everyone.

PARISH PARTY - Saturday 13 January 2018

- This party attracts the families, the table heaving with food, and lots of party poppers, paper hats etc. Musical chairs plus pass the parcel help to make a lot of noise, and there is much laughter and enjoyment by the children. The evening ends with the pantomime, when the audience of young people keep the actors on their toes booing, laughing and shouting to keep them all in order.

Look out for pantomime 2019!!

Cllr Mrs Rosemary Early

PAROCHIAL CHURCH COUNCIL

All Saints Church at Ashover holds a weekly service at 10.45 every Sunday morning (when there is a fifth Sunday in the month there is a United Benefice Service at Ashover, Brackenfield, Handley or Wessington), as well as additional church services to mark the main religious festivals and other local events. The average Sunday morning congregation is around 60, while at the Christmas Eve Family Carol Service the church is full. In 2017, 5 baptisms, 8 weddings and 27 funeral services were held in Ashover Church.

The Ashover Celebration Choir has taken part in all the major Christian festivals and also led services in local churches. They have sung at various village celebrations over the Christmas period and by invitation at weddings.

Children's activities ("Allsorts") are held most Sundays to coincide with the Communion services. In addition, a pre-school group for parents and toddlers, Acorns, is held on two Thursday mornings a month in the Bassett Rooms, and Messy Church activities are held on various occasions during the year.

During Advent, the church again organised a Posada celebration to reinforce the Christmas message. This involved wooden figures of Mary, Joseph and the donkey being hosted by a number of different families in the village each evening and being taken to church each Sunday for the lighting of the

Advent candles. On Christmas Eve they were placed around the crib in the church ready for the arrival of Jesus.

As in previous years, the church has supported financially a number of overseas missions and relief agencies, as well as various local and national charities.

A number of church members regularly visit Grove Park and Grove House residents, many of whom are unable to attend church services, for worship, craft work, quizzes and reminiscing.

Church members again played prominent roles in organising and participating in the May Day Carnival, the Pantomime, the Parish Party, the Village Coffee Shop and Film Time, all of which were initiated by the church as means of outreach to the local community. All donations received at certain Village Coffee Shop sessions during the year are allocated to selected charities, the charities chosen in 2017 being Ashgate Hospice, the Air Ambulance and Crisis at Christmas, for which a total of £1,032.40 was donated.

A highlight of 2017 was the Flower Festival "Sugar and Spice and All Things Nice" held in the church over the August Bank Holiday weekend by the Church Flower Guild, accompanied by an art display in the Bassett Rooms, organised by the Art Group.

The Amber Churches website (www.amberchurches.org) for Ashover, Brackenfield, Handley and Wessington Churches continues to provide information, news and a calendar of upcoming events. The Amber Churches also produce a monthly newssheet, Amber News, which is available free of charge at the Post Office and a number of local shops, as well as being accessible on the Amber Churches website.

Work began in July 2017 on extending and refurbishing the Bassett Rooms to make them more user-friendly for the various church and community groups and clubs which meet there. This work has involved adding an extension with a kitchen and a lift, reinforcing and soundproofing the upper

floor, removing the false ceiling above the first floor and refurbishing both main rooms. The building was formally reopened early in February 2018. The church is grateful to those who have made this possible: Mr and Mrs Baskill for their generous gift of land; Mrs Sheila Allen for managing the project with skill and determination; and individuals and groups who have supported the project financially. Further work on the Bassett Rooms is planned in the coming months.

Ashover PCC Secretary

ALL SAINTS CHURCH, ASHOVER

Parochial Church Council of the Ecclesiastical Parish of All Saints Ashover.

Registered Charity Number 1174119.

PLANNING

Your Parish Council is one of several statutory consultees whose comments are sought by the District Council on planning applications. Unless applications are received after agenda issue, those to be considered by the Parish Council are listed on Appendix I which is published with the agenda and posted on the main notice board and on the website. Applicants are encouraged to address the Parish Council, either in person or in writing, when their application is to be considered. Details of all applications, including associated documents, may be found on the District Council's website at www.ne-derbyshire.gov.uk

PLAY AREA

Your Parish Council is currently looking to provide play provision for older children and will be seeking grant funding to support the project.

POTHoles, PAVEMENTS & OTHER PROBLEMS

Derbyshire County Council has new facility for reporting problems with potholes, pavements, flooding, gritting, street furniture etc. Visit the DCC homepage at www.derbyshire.gov.uk and click on 'report

a pothole' etc. then follow the links to the online fault reporting form. After entering details, including an opportunity to upload a photo of the problem, you will be given a reference number, enabling you to keep track of action taken by DCC.

PUBLIC CONVENIENCES

Following threat of closure by the District Council in 2008, the old stone public conveniences on Moor Road were taken over by the Parish Council and refurbished in 2013, including the redundant telephone kiosk in the small room at the front of the building, which was turned into an Information Point featuring parish news and attractions, maps and details of local walks. Ashover is believed to be one of the few parish councils to accept responsibility for upgrading and maintaining its public conveniences.

RIGHTS OF WAY

These are ultimately controlled and maintained by Derbyshire County Council. The Parish Council undertakes minor works via its Minor Maintenance Agreement (MMA) with DCC. If you know of any maintenance issues please relay these to DCC on 01629 533190 or preferably report them on line via the County Council's website. During 2017/2018 your Parish Council used its total Minor Maintenance budget of £675 on minor maintenance to rights of way around the parish (path nos. 23, 48,84,134,136,145,152). Applications have been submitted to Derbyshire County Council under the Wildlife and Countryside Act 1981 to add non-classified highways, bridleways and footpaths to the Definitive Map and Statement as a Byway Open to All Traffic (BOAT). Outstanding application locations are shown below:-

1. Non-classified highway Coach Road, Ashover - Awaiting decision.
2. Non-classified highway Back Lane, Ashover - Awaiting decision.
3. Non-classified highway Lea Road and

upgrade part of Bridleway 145 Ashover – Consultation awaited.

4. Bridleway 145 Coffin Lane, Ashover – Consultation awaited. (part of claim 3 above).

Further information and an information sheet on modification orders may be obtained from the Director of Legal Services at Derbyshire County Council (01629 533190).

SCAMS

Derbyshire Police has issued the following advice on how to better protect yourself against unwanted calls:-

Be sceptical

Take your time

Know who you are dealing with

Protect your financial information

If you want assistance in finding out if it is a scam contact Consumer Direct on 08454 04 05 06

If you want to cut the junk contact:-

Mailings - 0845 703 4599 or

www.mpsonline.org.uk (Registration is free)

Telephone Calls - 0845 070 0707 or

www.tpsonline.org.uk (Registration is free).

You can also contact your telephone company to block callers who withhold their number.

Text/SMS - 0845 070 0707 or

www.tpsonline.org.uk. If you then receive a message you don't want you can reply with the word STOP.

Email - if you would like advice go to www.getsafeonline.org

IF IT LOOKS TOO GOOD TO BE TRUE, IT PROBABLY IS.

Derbyshire County Council Trading Standards and Citizens Advice North East Derbyshire are working together to highlight the problems of scams and fraud, through Derbyshire Scam Watch. Scams affect the lives of millions of people across the UK. People who are scammed often experience

shame and social isolation as a result. Scams come in many forms; uninvited contact is received by email, letter, and many of these sorts of scams but some of the most common are fake lotteries, deceptive prize draws or sweepstakes, clairvoyants, computer scams, and romance scams. The criminals attempt to trick people with flashy, official looking documents or websites, or convincing telephone sales patter, with the aim of persuading them to send a processing or administration fee, pay postal or insurance costs, buy an overvalued product or make a premium rate phone call. Doorstep Scams are crimes carried out by bogus callers, rogue traders and unscrupulous sales people who call, often uninvited, at people's home under the guise of legitimate business or trade. Derbyshire Scam Watch is urging members of the public to be aware of the issues and to be alert if they feel friends or relatives are vulnerable to such frauds. Trading Standards nationally are promoting a campaign called 'Friends Against Scams'. This includes 30 minute online learning package will help people to learn more about the issues.

If you like would like to talk to someone about scams then please contact scamwatch@nedcab.org.uk

You can report your suspicions about any scam to Citizens Advice Consumer Helpline on 03454 040506

Report fraud and internet crime to Action Fraud – www.actionfraud.police.uk

To learn more about scams and become a 'Friend Against Scams' – go to <https://www.friendsagainstsams.org.uk/>



SPEED AWARENESS

In 2014, eleven parish councils in the North East Derbyshire area clubbed together to provide a speed camera for police to use in a joint bid to make local roads safer.

Ashover, Brampton, Heath and Holmewood, Morton, North Wingfield, Pilsley, Shirland and Higham, Stretton, Sutton cum Duckmanton, Tupton and Wingerworth parish councils have all contributed to the campaign and provided funding for the camera and its maintenance. The camera is deployed, on average, once a week in one of the partnership parishes. Police Officers using the device informed councils that it is an excellent tool in tackling the issues of speeding in our areas.

To contact your local Safer Neighbourhood policing team call 101, or visit the website: www.derbyshire.police.uk

STREET FURNITURE/PROPERTY

A rolling programme continues to operate for the maintenance of parish owned street furniture, including parish seats, bus shelters and notice boards and parish owned property. Where possible, the maintenance work is carried out by the Parish Lengthman as part of his duties and other work, such as vegetation strimming around some seats, is carried out under contract. Risk assessments and inspections have been undertaken in accordance with legal requirements.

SUBSCRIPTIONS

Your Parish Council continues to subscribe to the Derbyshire Association of Local Councils (DALC) and the Institute of Cemetery & Crematorium Management (ICCM) on an annual basis. DALC offers free legal and professional advice on all aspects of parish and town council business backed up by experts at NALC (National Association of Local Councils) and regular information circulars. Likewise ICCM also offers free advice to its members and regular newsletters.

TENNIS CLUB

For full details of how to join please contact the Club Secretary via email: Ashovertennis@aol.com or Ashovertennis@btinternet.co.uk.

Further details about the club can also be found on the Lawn Tennis Association's website.

TREE WORKING GROUP - A working group of Ashover Parish Council

Our 3rd birthday approaches! We've had a busy year, broadening our involvement in the community. Planning Applications
New planning applications are now shared with our group, giving us the opportunity to comment on how proposals might risk damage to trees on or near the subject site. Examples over the past 12 months include instances where the intended location of buildings are too close to tree canopies. Also, and just as important, is the need for adequate root protection areas (RPAs) to ensure any excavation work will not risk damage to roots and in turn a tree's long-term survival. Recent applications where the Tree Group provided input include:

- Narrowley's Lane
- Cripton Lane
- Ashover Road, Kelstedge
- Marsh Green Lane

TREE PRESERVATION ORDERS (TPOS)

As a result of recent dialogue with NEDDC we now have CDs showing their understanding of TPO protected trees in the parish. From reviews carried out over the past year it is clear some of these records are inaccurate and we will be providing feedback to the Council to help them carry out updates. Meanwhile, the records have been very useful in helping us provide timely feedback to NEDDC when applications for work on TPO protected trees are submitted for their consideration. The records also help inform

our review of planning applications.

WORKING PARTIES

TREE SEEDLINGS - We have now built up a nursery of tree seedlings or 'whips' which we will draw from to re-plant in some of the areas where our working parties have been engaged (see below). These whips cover the local variety of indigenous trees and include oak, wild cherry, beech, lime, hazel and horse chestnut.

GREAT EASTERN PLANTATION - Our tidy-up of the Great Eastern Plantation has been completed. During the early stages of the work we liberated some beech saplings which were vulnerable to trampling from grazing cattle. We'll re-plant these (which have been growing well in tubs) later in the year.

HILL ROAD COMMON WOODLAND - This area, formerly a quarry, had been neglected for many years and is mostly populated with self-seeded sycamore but there is some oak, rowan, horse chestnut and silver birch. Our initial focus has been to cut back heavy over-growth of brambles, holly and ivy as well as pruning some of the mature trees. Unfortunately, there has been quite an accumulation of scrap metal and glass: we have arranged one Council collection and will need to arrange follow-up. That said, the copse is looking much better and hopefully the clearance efforts will soon lead to much more diversity in woodland flora.

DEMONSDALE - UPPER SLOPES - This is quite a big project for our small group. Essentially it focuses on scrub clearance from the lower slopes up to the limestone 'cliffs'. Our work is at an early stage but already some of the cave formations, long obscured, are now visible. Work will continue over the summer months and hopefully this will enhance the views for those walking along the track.

REVELMENT - This was a project we completed over a year ago aimed at stemming the high degree of erosion on a bend in the

river between Jetting Street and Milltown. It's pleasing to be able to report that the revetment has now blended well into its surroundings and has resisted recent high levels of floodwater.

COLLABORATION - It's always enjoyable for us to get together with other groups and work towards common goals. We collaborate closely with the Footpaths Group, helping them with local projects and last year we shared a stall with them at the May-day celebrations in the village.

THE YEAR AHEAD...
...promises more of the same with continuing focus on TPO re-surveys, planning applications, working parties and our collaboration with other groups. We'll also be cracking on with a programme of planting new trees, native to the area, to replace those lost through age or bad weather.

Overall, an interesting year ahead for us to look forward to and if you'd like to join our group you'd be very welcome!

ASHOVER TREE GROUP
01246 591 733

TREE WARDEN

If there is anything about hedges trees and woodland within the parish which causes you concern, or you need advice about or help with, please contact Linda Stephenson on 01246 591949 or email bryanstepho@btinternet.com

Ashover Parish Tree Warden

Trusted Trader Scheme (Derbyshire County Council)

Finding a company that you can trust to do some work for you can be a bit daunting – how can you be sure that you won't get ripped off? What if things go wrong? How do you choose between lots of different companies? These sorts of dilemmas were a driving force behind the setting up by Derbyshire County Council of the Trusted Trader scheme to help local people find traders and businesses that do a good job at a fair price and provide good

customer service.

That was back in 2008 and the popular scheme has gone from strength to strength. These days there are nearly 17,000 searches each month on the Trusted Trader website, www.derbyshire.gov.uk/tt by people looking for reliable companies to use. Another ringing endorsement for the scheme was a recent survey which gathered feedback from more than 16,000 people who had used a Trusted Trader and an impressive 94% said they were very satisfied with the service they received.

So people can have lots of confidence when employing one of the 1,200 traders who are part of the scheme. In the very unlikely event of someone having a problem with one of the traders then help is at hand. Derbyshire County Council trading standards officers can get involved in any queries involving Trusted Traders and seek to resolve them.

The scheme particularly helps to protect older and vulnerable adults by making it easier for them to use Trusted Traders rather than rogue traders who typically cold-call and use high pressure sales techniques. A recent development has been the inclusion of Financial Advisors who specialise in providing financial advice for people in later life and can help with matters like care fees, pensions and investments.

Find out more about all aspects of Trusted Trader at www.derbyshire.gov.uk/tt or call 01629 536148. Enquiries are also welcome from businesses interested in signing up to the scheme – membership brings lots of benefits and costs only £70 - £100 per year.

DERBYSHIRE COUNTY COUNCIL

UPPERTOWN SOCIAL CENTRE

The Centre provides a first class facility for social activities for the people of Ashover and surrounding areas. It has comfortable and up to date facilities for parties, birthdays, weddings and other special occasions but is equally suited to conferences, training sessions or meetings.

Facilities include:

- Licensed bar

- Fully fitted kitchen for outside caterer or hirer use
- Function room for up to 120 people
- Car parking for 25 cars (this area can be used to erect a marquee)

The Centre is run on a not for profit basis as a charity, which would not be possible without the committee of local people and a group of willing volunteers.

PLEASE SEE THE 2018 EVENTS ON PAGE 22

WASTE RECYCLING (Derbyshire County Council)

Household Waste Recycling Centres (or Civic Amenity Sites) are provided by the county council for the disposal of waste produced from households which is either too large or too bulky to be accepted by the normal district council weekly collection. Your nearest site is located at Stonegravels, Sheffield Road, Chesterfield which has full recycling facilities. The site is open seven days a week from 8.30am – 6.00pm (closed 25/26 December and 1 January)

DERBYSHIRE COUNTY COUNCIL
01629 580 000

WEBSITE – www.ashover-pc.gov.uk



Your Parish Council's website is www.ashover-pc.gov.uk, and is the gateway into the parish council and numerous local services, from there you can also find links to other organisations including North East Derbyshire District Council and Derbyshire County Council.

The site contains, along with many other

things, items of news, advice of road closures in the parish, links to leisure facilities, you can even have a look at your Parish Councillors and Parish Council staff. There are links to your Local Councillor, District Councillor and Member of Parliament.

There are calendars for council meetings and events and leisure activities taking place in the Parish.

There are forms to report problems and issues within the Parish, there is an A-Z link where there is a whole raft of information about the Parish, County and District Councils.

Why not have a look at it at: www.ashover-pc.gov.uk, you can also find us on Facebook and Twitter.



BNE D LEADER PROGRAMME

DON'T MISS THE DEADLINE FOR LEADER FUNDING

€1,713,000 of European funding has been allocated to our area to create jobs and growth in rural businesses and communities.

Grants of up to €200,000 are available for a maximum of 40% of the total project costs. The minimum grant that can be applied for is £3,500. For some activities such as Tourism, Culture and Rural Services LEADER can pay up to 100% of costs.

Bolsover North East Derbyshire LEADER group has spent £175,000 of our budget so far on 5 projects and with Brexit in the horizon we have less time to spend our allocation. Projects need to be contracted by March 2019 so applications need to be in by September 2018 at the latest and earlier if you want the best chance of funding!

Get to the front of the queue and contact the team today info@bned-leader.co.uk or call 01246 217594.

diversification and improvements to a dairy farm to increase milk production. These projects have already created jobs and growth for the rural economy and the local business owners are benefiting greatly. See our website for more information at www.bned-leader.co.uk - here you can download a copy of the Applicant Handbook which is full of information for all applicants and a copy of the Expression of Interest form.

The LEADER team are here to help you through the process every step of the way so don't hesitate to give us a call.



BNED LEADER Programme

2014 - 2020



Funding is available for businesses operating in the rural communities of Bolsover and North East Derbyshire who are seeking to grow and create jobs in the area.

Grants from £3500 and up to £200,000 are available for a maximum of 40% of the total project costs.

Expression of Interest applications need to be submitted to the Bolsover North East Derbyshire LEADER Approach by 30th September 2018 to enable funding to be allocated prior to the UK leaving the European Union. Applicants requiring larger grants should submit their bids as soon as possible.

For more information and to discuss project ideas please contact the LEADER Team today at info@bned-leader.co.uk, call 01246 217594 or visit the programme website at www.bned-leader.co.uk

If LEADER funding is not for you why not turn over to learn more about other funding available in your area.



The European Union has provided financial assistance for this project



Business Growth Fund



We speak your language

Polish
Mówimy Twoim językiem

French
Nous parlons votre langue

Spanish
Hablamos su idioma

Slovak
Rozprávame Vaším jazykom

Chinese
我们会说你的语言

If you require this publication in large print or another format please call:

Bolsover District Council on 01246 242424 or North East Derbyshire District Council on 01246 231111

Designed and printed by North East Derbyshire District Council 9145

Bolsover and North East Derbyshire District Councils have established their Business Growth Fund programmes.

Is your business in Bolsover District, Clay Cross, Dronfield or Tupton?

Are you looking to grow your business and create a new job?

If you answered YES to the above, contact us to discuss your idea.

More information about what is eligible can be found on the BGF guidance pages of the Councils' websites.

Visit www.bolsover.gov.uk • www.ne-derbyshire.gov.uk

For more information on the application process and eligibility please contact:

Bolsover (all Bolsover District communities eligible) grants up to £10,000 - Helen Jenkins, Tel: 01246 242512 Email: helen.jenkins@bolsover.gov.uk

North East Derbyshire (the non-LEADER areas of Clay Cross, Dronfield and Tupton) grants up to £4,000 - Martyn Handley, Tel: 01246 217203 Email: martyn.handley@ne-derbyshire.gov.uk

Other business advice and funding

Business advice and funding is also available through the Local Enterprise Partnership Growth Hubs that cover the area:

D2N2 LEP - Tel: 0333 006 9178. www.d2n2growthhub.co.uk

Sheffield City Region LEP - Tel: 03330 00 0039 www.scrgrowthhub.co.uk

Uppertown Social Centre

A Registered Charity (Number 1023876)

Uppertown, Ashover, Chesterfield, Derbyshire, S45 0JF



Events for 2018

Sat. 3rd February 7pm for 8pm	John Pickering 50's & 60's	£8.00 incl supper
Sat. 24th February 7pm for 8pm	Kick-N-Rush Comedy Skiffle Band	£10.00 incl supper
Sat. 17th March 7pm for 8pm	St. Patrick's Night feat. Fiddlers Green	£10.00 incl supper
Sat. 7th April 6pm onwards	Easter Family Night & Disco	£5 all ages
Sat. 21st April 7pm for 8pm	Murphys Marbles Irish & Folk	£13.00 incl supper
Sat. 19th May 7pm for 8pm	The Haleys Country & 50's	£13.00 incl supper
Sat. 16th June 7pm for 8pm	Rattled 50's & 60's	£10.00 incl supper
Sat. 14th July 7pm onwards	Bar-B-Q Night music from Black Hands	£5.00 food extra
Sat. 18th August 7pm for 8pm	John Tams & Barry Coope Folk N.B. Tickets must be bought in advance.	£16.00 incl supper
Sat. 15th September 7pm for 8pm	Arthur Doherty Band Irish & Folk	£12.00 incl supper
Sat. 13th October 7pm for 8pm	The Cadillacs (Northwest) Rock'n Roll	£13.00 incl supper
Sat. 27th October 7pm to 10pm	Halloween Party Disco & Fancy Dress	Admission £4 all ages
Sat. 3rd November 6pm START	Bonfire & Fireworks Display	Admission £5 all ages (under 5's free)
Sat. 1st December 7pm for 8pm	Pat Jordan and Finians Rainbow Irish & Pop from all decades	£13.00 incl supper
Sat. 22nd December 6pm onwards	Christmas Family Night—Santa & Disco	£5 all ages

**You can book tickets in advance by
ringing Eddie on 07966 154798
www.uppertown.org**

Published December 2017 subject to alteration without notice.

FINANCIAL REPORT PRECEPT 2018/2019

At the Parish Council meeting held on 17 October 2017, consideration was given to the recommendations of the Finance Committee for the precept application for 2018/19.

The Finance Committee deliberated each code and cost centre in the accounting system, recognising the need to limit expenditure as far as possible due to current restraints and economic climate and taking into account a realistic income figure. The 12 to 16 year Capital Assets Renewal Programme continued to be included in the precept sum and this would be revised to reflect ongoing capital expenditure and to include new capital purchases. Members recognised the requirement to retain six months precept reserves at all times, whilst being aware of access to earmarked reserves

Ashover Parish Council had been notified by NEDDC that the Tax Support Grant Funding would be reduced year by year as follows:-

2018/19	2019/20	2020/21
£1,157	£578	£0

Members recognised a significant reduction in income and this was due to the loss of £578 in support grant funding and a shortfall in anticipated income and an increased cost in services and parish maintenance.

The Precept figure for 2017/2018 was £67,944 including Tax Support Grant Funding of £1,735.

Having deliberated the budget for the Financial Year 2018/2019, an anticipated realistic income figure of £13,112.00 (including the Tax Support Grant of £1,157) set against an anticipated expenditure figure of £86,536.00 produced an annual Precept figure for 2018/2019 of £73,424.00. This represents a £5,480.00 increase (8%) on the previous year due to a significant reduction in income and increased costs for services and parish maintenance. Having regard to the recent increase in dwellings and proposed growth, it was anticipated that the increase would be spread over more properties and therefore should have a lesser impact on individual households.

ANTICIPATED FIGURES

COST CENTRE	Exp. 2017/18	Inc. 2017/18	Exp. 2018/19	Inc. 2018/19
	£	£	£	£
Administration	35945	4180	35840	3602
Section 137	600	0	600	0
Pavilion/Courts	3545	1250	3480	950
Public Toilets	2830	0	2810	0
Capital	9869	0	10286	0
Allotments	100	50	100	60
Cemetery	8775	12000	8775	8500
Parish Maintenance.	23760	0	24645	0
TOTALS	85424	17480	86536	13112
PRECEPT	2017/18	£67,944	2018/19	£73,424

Summary Receipts & Payments Year Ended 31 March 2018

Year Ended 31 March 2017		Year Ended 31 March 2018
Receipts		
64345.04	Precept Received	66209.24
232.54	Interest Received	183.49
64577.58	Total	66392.73
Operating Income		
18077.88	Administration	9609.66
1978.41	Pavilion	1441.08
50.00	Allotments	60.00
6380.00	Cemetery	12,200.00
10084.72	VAT	9106.87
101148.59	Total Receipts	98810.34
Running Costs		
32165.74	Administration	28179.68
438.94	Section 137	466.36
100.00	Other Grants	0.00
3025.24	Pavilion	3239.22
2698.74	Toilets	2097.49
17259.69	Capital Projects	5846.66
75.72	Allotments	0.00
10416.89	Cemetery	8956.85
36902.63	Parish Upkeep	32336.67
10201.32	VAT on Payments	8550.98
113284.91	Total Payments	89673.91

Summary Receipts & Payments Year Ended 31 March 2018

Year Ended 31 March 2017		Year Ended 31 March 2018
Receipts & Payments Summary		
95404.26	Opening Balance	83267.94
101148.59	Add Total Receipts	98810.34
196552.85		182078.28
113284.91	Less Total Payments	89673.91
83267.94	Closing Balance	92404.37
Cumulative Funds represented by:		
48442.03	Current/Reserve Account	13110.48
34825.91	National Savings Account	79293.89
83267.94		92404.37

For information and help on the following services, please call the appropriate authority (details at the right of this page) or visit www.ashover-pc.gov.uk and click on the A-Z of services :-

Bulk Waste Collection Service	NEDDC
Bus Shelters	APC
Car Park (Milken Lane)	APC
Cemetery (Ashover)	APC
Council Tax	NEDDC
Common Land	APC
Dog Waste Bins	APC
Dog Wardens	NEDDC
Education	DCC
Energy Advice Centre	NEDDC
Environmental Health	NEDDC
Fly Tipping	NEDDC
Grit Bins	APC/DCC
Highways	DCC
Housing	NEDDC
Libraries	DCC
Licensing	NEDDC
Parish Plan (Ashover parish)	APC
Parish Seats	APC
Pest Control	NEDDC
Planning Permission	NEDDC
Play Area (Ashover)	APC
Playing Field/Hard Courts (Ashover)	APC
Potholes	DCC
Public Toilets	APC
Recycling (inc. blue box/bag scheme)	NEDDC
Refuse Collection	NEDDC
Reg. of Births, Deaths, Marriages	DCC
Register of Electors	NEDDC
Rights of Way (footpaths/bridleways)	DCC
Social Services	DCC
Street Cleaning	NEDDC

Street Lighting Repairs	DCC
Trading Standards	DCC
War Memorial	APC

NEDDC
North East Derbyshire District Council, 2013 Mill Lane, Wingerworth, Chesterfield S42 6NG Tel. 01246 231111

DCC
Derbyshire County Council
County Hall, Matlock DE4 3AG
Call Derbyshire 01629 533190

APC
Ashover Parish Council
The Sports Pavilion
Milken Lane
Ashover
Chesterfield
S45 0BA
Tel. 01246 863018

EMERGENCY SERVICES

Always dial 999 in case of an emergency

Derbyshire Police

101 (calls to report crime, anti-social behaviour, non-violent crime or general information)

Please note: You **MUST** continue to use 999 where a crime is in progress, for serious crime or where violence is being used.

Derbyshire Fire & Rescue

Administrative and fire safety enquiries:
01332 771221

Power and supplies

Electricity: Central Networks
(emergency) 0800 056 8090

Gas (emergency) 0800 111 999

Severn Trent Water (emergency)
0800 783 4444
or 0845 9881188 (flooding)

National Floodline
0845 988 1188

Hospitals/medical

NHS 111 is a new service that's being introduced to make it easier for you to access local NHS healthcare services in England. You can call 111 when you need medical help fast but it's not a 999 emergency. NHS 111 is a fast and easy way to get the right help, whatever the time.

NHS 111 is available 24 hours a day, 365 days a year. Calls are free from landlines and mobile phones.

Royal Derby Hospital
01332 340131 - Main switchboard

Chesterfield Royal Hospital
01246 277271

Buxton Hospital
01298 214000

INFORMATION AND HELP

Derbyshire County Council – 01629 533190

North East Derbyshire District Council - 01246 231111

Lee Rowley MP - Parliamentary

Constituency

Office of Lee Rowley MP
Eckington Business Centre, Market Street,
Eckington, Derbyshire, S21 4JH

Tel: 01246439222

Email: lee.rowley.mp@parliament.uk

Web & Social media

 Twitter: @lee4ned

YOUR PARISH COUNCILLORS



William Armitage
Green Bank
Hockley Lane
Ashover
CHESTERFIELD
S45 0ER
01246 590486



Steve Dronfield
Willow Tree Farm
Hungerhill Lane
Stonedge
CHESTERFIELD
S45 0LP
01246 590721



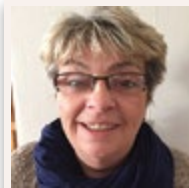
Nigel Early
Lexley Gables
Hockley Lane
Ashover
CHESTERFIELD
S45 0ER
01246 590738



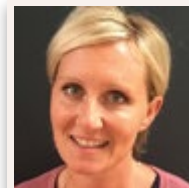
Rosemary Early
Lexley Gables
Hockley Lane
Ashover
CHESTERFIELD
S45 0ER
01246 590738



Richard Fidler
Porthlea
Alton Lane
Littlemoor Ash-
over
CHESTERFIELD
S45 0BE
01246 590155



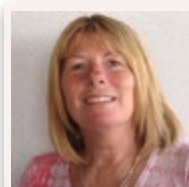
Martha Hayward
Arkaig House
Pudding Bag Lane
Ashover
CHESTERFIELD
S45 0BT
01246 590771



Lucy Hunter-Bott
Marshbrook
Butts Road
Ashover
CHESTERFIELD
S45 0HW
07976 733607



Chris Miller
Hill House
Hill Road
Ashover
CHESTERFIELD
S45 0BX
01246 590253

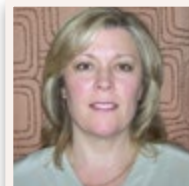


Alison Tyson
Church Street
Ashover
CHESTERFIELD
S45 0AB
01246 590009



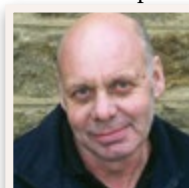
Ed Willmot
The Pines
Hill Top Road
Ashover
CHESTERFIELD
S45 0BZ
01246 590260

YOUR PARISH COUNCIL STAFF



Sara Atkinson
Parish Clerk & RFO
The Sports Pavilion
Milken Lane
Ashover
Chesterfield S45 0BA
01246 863018

parishclerk@ashover-pc.gov.uk



John Bown

YOUR COUNTY AND DISTRICT COUNCILLORS



Barry Lewis
DCC Councillor
2 King George Street
Wessington
Derbyshire
S55 6DZ
01773 830871
Mobile: 07920484207



William Armitage
NEDDC Councillor
Green Bank
Hockley Lane
Ashover
CHESTERFIELD
S45 0ER
01246 590486



© Ashover Parish Council
May 2018
