

## ASHOVER PARISH COUNCILLORS

- **William Armitage** (01246)590486  
Green Bank, Hockley Lane, Ashover S45 0ER
- **Helen Boffy** (07515 280707)  
Langford House Narrowleys Lane Ashover S45 0AU
- **Steve Dronfield** (01246) 590721  
Willow Tree Farm, Hunger Hill Lane, Stonedge S45 0LP
- **Nigel Early** (01246) 590738  
Lexley Gables, Hockley Lane, Ashover S45 0ER
- **Rosemary Early** (01246) 590738  
Lexley Gables, Hockley Lane, Ashover S45 0ER
- **Richard Fidler** (01246) 590155 (**Vice-Chairman**)  
Porthlea, Alton Lane, Littlemoor S45 0BE
- **Lucy Hunter-Bott** 07976 733607  
Marshbrook, Butts Road, Ashover S45 0HW
- **Chris Miller** (01246) 590253  
Hill House, Hill Road, Ashover S45 0BU
- **Mike Thomas** (01246) 591733  
Touchstone Chapel Hill Ashover S45 0AT
- **Ed Willmot** (01246) 590260 (**Chairman**)  
The Pines, Hill Road, Ashover S45 0BZ

**District Councillor - William Armitage** (01246)590486  
Green Bank, Hockley Lane, Ashover S45 0ER  
**County Councillor – Barry Lewis** (01773) 830871  
2 King George St, Wessington S55 6DZ

- **Parish Clerk/Burial Clerk:** Sara Atkinson (01246) 863018  
E-Mail: parishclerk@ashover-pc.gov.uk  
Sports Pavilion, Milken Lane, Ashover S45 0BA

### USEFUL CONTACT NUMBERS:-

**Derbyshire County Council** – 01629 580000 or 01629 533190

**North East Derbyshire District Council** - 01246 231111

**Police – NON-URGENT** calls to report crime, anti-social behaviour, non-violent crime or general information: 101

**Please note:** You **MUST** continue to use 999 where a crime is in progress, for serious crime or where violence is being used.

**Citizens Advice Bureau** – Providing consumer advice, free of charge, on a range of issues or complaints.

Website: [www.adviceguide.org.uk](http://www.adviceguide.org.uk) Tel. 08454 040506

ISSUE no.3  
2019/2020



## **ASHOVER PARISH COUNCIL COMMUNITY FIRST**

Working for the whole of the Ashover Parish

Website: [www.ashover-pc.gov.uk](http://www.ashover-pc.gov.uk)

### **WINTER MAINTENANCE & HIGHWAY SAFETY**

#### **REPORT EMPTY GRIT BINS AND HIGHWAY PROBLEMS**

- [www.derbyshire.gov.uk/snow](http://www.derbyshire.gov.uk/snow)

- Report empty grit bins to 'Call Derbyshire' on 01629 533190 or online report form or by text to 86555 quoting the grit bin number.

- Request road gritting online

- Your parish council owns 37 grit bins sited around the parish, and these are identified as belonging to Ashover Parish Council, these bins may be reported to DCC or directly to the Parish Clerk on (01246) 863018 or e-mail [parishclerk@ashover-pc.gov.uk](mailto:parishclerk@ashover-pc.gov.uk). **Please remember that all grit supplied by your Parish Council is for use on public roads and footways.**

If you are concerned about an old or vulnerable person 'Call Derbyshire' 01629 533190.

**REPORT IT** – If you spot a pothole or other problems on the highway like damaged kerbs or markings, missing or sunken ironworks, blocked drains or broken streetlights, report them at [derbyshire.gov.uk/doitnow](http://derbyshire.gov.uk/doitnow)

## HIGHWAY SAFETY CAMPAIGN A632

With many accidents already having taken place this year, Ashover Parish Council is conscious of the ongoing safety issues along the A632 Matlock to Chesterfield Road. With the increase in housing development in Matlock, the main road is becoming busier and there is concern for the safety of residents in Kelstedge and road users in the parish generally, who are finding it more and more difficult to access the road at busy times of the day.

Whilst the installation of photovoltaic warning signs at Span Carr have had some effect, Ashover Parish Council is leading a campaign to Derbyshire County Council to increase safety measures along the A632 which may include extending speed restrictions, cameras and a roundabout for example.

**Your Parish Council is calling on you to support this campaign by writing, with details of your concerns and suggestions to:-**

Councillor Barry Lewis  
Leader of Derbyshire County Council  
County Hall  
MATLOCK  
DE4 3AG  
Email: [barry.lewis@derbyshire.gov.uk](mailto:barry.lewis@derbyshire.gov.uk)

**Please copy Ashover Parish Council in to your correspondence at:-**

Ashover Parish Council  
The Sports Pavilion  
Milken Lane  
Ashover  
CHESTERFIELD  
S45 0BA  
Email: [parishclerk@ashover-pc.gov.uk](mailto:parishclerk@ashover-pc.gov.uk)

## Cemetery sanctuary for Hedgehogs!

Recent estimates put the hedgehog population in England, Wales and Scotland at about one million, compared with 30 million in the 1950s. Perhaps surprisingly hedgehogs are scarcer in rural areas. There are thought to be various reasons for this - larger fields and the loss of hedges and copses result in fewer nesting sites and less protection for hedgehogs. Availability of prey is also an issue - food insect larvae and soil invertebrates such as earthworms and slugs make up a large part of hedgehogs' diet but can be scarce in agricultural soils especially where insecticides are used.

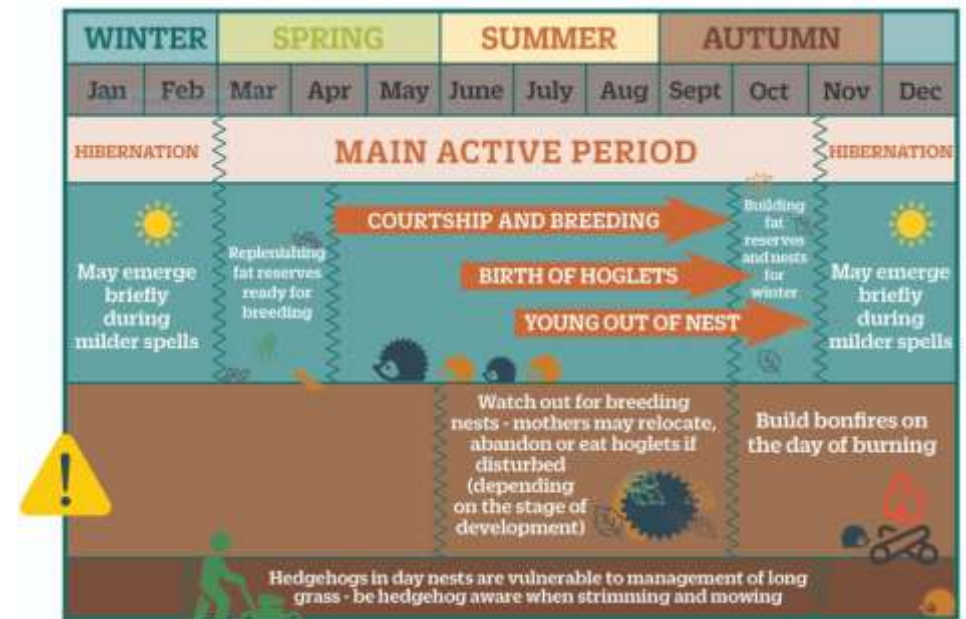
There are direct threats too – busy roads are a hazard for them and it's great that new signs featuring a picture of a hedgehog are to appear on UK roads to warn motorists of potential hazards caused by the spiny creatures and other small wildlife. Look out for them!

In Ashover we're fortunate in having a significant population of badgers but there is a down-side for hedgehogs in that badgers are a predator, as well as a competitor for the same food.

So, with so many pressures on hedgehogs we've been looking at how we might give them a helping hand. Habitat is very important: a good network of hedging, scrub and bramble provides nesting habitat for hedgehogs, cover from predators and a source of food.

In Ashover's church cemetery there's a triangle of overgrown trees and scrub which we think is ideal. There's plenty of bramble patches, log piles and open compost heaps which will help create a perfect habitat. We're also looking at making some purpose-built hedgehog houses and if you think you can help with this then do let us know.

We'll keep you updated on how many little visitors we attract!



Picture: The Hedgehog's Year – used with kind permission of hedgehogstreet.org