



Ashover
Community First

ISSUE no.1
2021/2022

Ashover Parish Council Annual Report 2020/2021



LOCAL COUNCIL
AWARD SCHEME
QUALITY

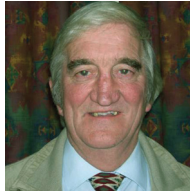
Working for the whole of the Ashover Parish
Website: www.ashover-pc.gov.uk



CONTENTS		
		Public Conveniences 15
		PSPO 15
CHAIRMAN'S REPORT	1	Rights of Way 15
Allotments	3	Scams 16
Community Medical Centre	3	Speed Awareness 16
Ashover Light Railway Society	3	Street Furniture/Property 17
Ashover Show 2021	4	Subscriptions 17
Cemetery	4	Tennis Coaching Report 18
Christmas Lights '20	4	Tennis Club 18
Climate Change	5	Tree Warden 18
Common Land	5	APC Response 19
Community Car Scheme	5	Trusted Trader Scheme 19
Communication	5	Uppertown Social Centre 20
County/District Liaison	5	War Memorial 20
Cricket Club	5	Waste Recycling: DCC 20
Defibrillators	6	Website – www.ashover-pc.gov.uk 21
District Councillor W Armitage	6	Financial Report 22
Donations/Grants	7	COUNCILLORS 25
Employees	7	INFORMATION AND HELP 27
Footpaths & Bridleways	7	
Grit Bins	8	
Grounds Maintenance	8	
Hard Courts	8	
Litter - Volunteer Day	8	
Litter Problem	9	
Local Council Award Scheme	9	
May Day	9	
Neighbourhood Plan	9	
NEDDC Local Plan 2014-2034	10	
Newsletters	10	
Oil Buying Scheme	10	
Parish Appearance/Maintenance	11	
Parish Councils and Meetings	11	
Parish Council Surgeries	11	
Parish Hall	11	
Parochial Church Council	12	
Planning	13	
Play Area Project	13	
Potholes, Pavements & other	14	
Primary School	14	

CHAIRMAN'S REPORT

Dear Parishioners,



2020 into 2021 has been a year with a difference due to Coronavirus which has created many challenges for everyone. Legislation regarding holding of meetings and work throughout the parish has been changing continually, particularly during periods of lockdown. The Parish Council is very grateful for the way the local services have gone that extra mile in addressing local needs. The Public Houses, having to remain closed, have still endeavoured to provide “take away” meals; please accept our thanks.

Extra cleaning measures in areas like the toilets, pavilion, play areas and equipment, along with provision of Personal Protection Equipment and hand sanitising units, has added additional cost to the Parish finances.

Unfortunately all Parish events had to be postponed, but hopefully they will resume in 2021.

Work conducted by the Parish Council includes:-

- The ongoing A632 safety campaign and raising the issue with our local MP. Unfortunately, a public meeting had to be cancelled due to the pandemic. It is hoped that volunteers may be trained to use speed cameras once the Coronavirus restrictions are lifted.
- Ongoing consultation is taking place with Derbyshire County Council and Ashover Primary School in an effort to address traffic issues and safety concerns at school drop-off and pick-up times. We ask your support in making use of the car park on Milken Lane to alleviate parking problems around the Primary School.
- A Climate change statement made by your Council in July 2020, has led to the formation of a working group to progress an action plan. Any suggestions you would like to put forward are welcomed.
- Compliance with Accessibility Regulation 2018 has been achieved
- Clerk's training included Accessibility Regulations, Public Sector Mapping, Memorial and grave Management and Law and Good Practice.
- Councillor training included Accessibility Regulations, Employment issues, Memorials and Grave Management and Climate Change.

CONTINUED ON THE NEXT PAGE...

All of the above training courses were organised and run by the Derbyshire Association of Local Councils in a remote platform format.

Unfortunately the Christmas Lights Switch-on involved only the lighting of the tree with no associated ‘event’ taking place. However, it still proved to be a welcome sight over the Christmas period. The tree was kindly donated by Ashover Community Medical Centre Ltd.

It is good news to see Richard Felton, Ashover Rights of Way stalwart, out and about again helping to keep the Parish litter free - a never ending task. Ashover Parish Council made use of a £675 minor maintenance grant from Derbyshire County Council, to undertake general maintenance on some of the rights of way.

The Play Area Project, at a cost of £45,000, was completed in December 2020. This has been a major project and sincere thanks go to Ashover Community Medical Centre Ltd for a £12,000 grant and to the Councillors and Clerk who gave their time to oversee the project.

Mike Thomas left the Parish Council in March 2021 and thanks go to Mike for all his hard work during his time in office. In June 2021, Members welcomed John Cook onto the Council.

Hopefully, in the Autumn, a one day exhibition to display local historic finds and artefacts will take place in the Parish Hall. Please look out for further information.

Once again a busy year made difficult by the Coronavirus, but using the “zoom” meeting platform has helped to achieve a successful year.

I would like to take this opportunity to thank everyone who has contributed, in the many different ways, in keeping Ashover Parish a very ‘special’ place

Thank you and keep safe.

Councillor Ed Willmot
Chairman, Ashover Parish Council
2021/2022

ALLOTMENTS

The allotments on Marsh Green are owned by the Parish Council and are presently rented by six residents.

ASHOVER COMMUNITY MEDICAL CENTRE LTD

Ashover Community Medical Centre is owned by a community-based trust (which is also a company limited by guarantee) and leased to the medical practice. Money was raised to construct the medical centre through fundraising, the contributions of local businesses and securing external grants. The advantage of the Trust owning the medical centre is that the funds generated from the rent received are distributed for the benefit of the community in accordance with the Trust's charitable objectives.

The Trust has appointed two new trustees this year, Lucy Taylor and Paul Winter who are both locally based and will each bring a fresh perspective to our work. The other trustees are Ed Willmot (Chair), Andrew King (Treasurer) and Jacqueline Collins (Secretary).

This has been an unprecedented year and the Trustees wish to convey their sincere thanks to all the doctors and staff at the surgery for their sterling efforts in keeping the community safe during the pandemic. Indeed the recent events have demonstrated more than ever the importance of having medical services based in the village.

The Trust has taken the opportunity to work with the medical practice by providing funding of £27,000 to upgrade the surgery during the COVID pandemic. The improvements include a new path, enhanced lighting, replacement flooring, a new dispensary canopy and window, hygienic chairs and an entrance door intercom and control mechanism. We hope that patients have benefited from these improvements. The Trust is also funding improvements to

make the surgery more energy efficient, such as switching to LED lighting and improved insulation.

Owing to the current circumstances there has been a reduction in the number of grant requests this year. However, the Trust is pleased to have made a significant contribution of £12,000 towards the provision of the new play area in the village. In addition grants have been made to upgrade the Parish Hall lighting, to the lunch club and to the football club.

The Trust is working to open new lines of communication with the community with the introduction of a Facebook page. We are all looking hopefully towards the resumption of community activities and for any grant enquires please e-mail: enquiries1acmcl@outlook.com

ASHOVER LIGHT RAILWAY SOCIETY (A registered charity)

2020 was (for us as well as others) a most unusual year. Normally our display and publicity stand would have been attending local shows, we would have had a photo exhibition in Clay Cross library and various other events in the area. The effects of the pandemic meant that none of these took place and we had to rely on our website and social media presence to share details about the Ashover Light Railway and its contribution to the history and social fabric of Ashover.

The various lockdowns and restrictions have slowed, but not prevented entirely, our progress at Peak Rail's Rowsley site in producing a recreation of the scene at Ashover Butts in its heyday. (It should be noted that we are still actively looking for any opportunities which might arise for us to establish a presence somewhere on the original trackbed.)

On a different note, we are increasingly concerned about the deteriorating condition of the one original ALR building

which still exists, i.e. the station shelter at Fallgate and would welcome the chance to restore it and re-erect it on our Rowsley site if the opportunity ever arose.

Meanwhile, we look forward to 2021 and would welcome visits from Ashover and district residents to inspect the progress we have made at Rowsley (when lockdown restrictions are lifted of course).

ASHOVER LIGHT RAILWAY
REGISTERED ADDRESS: 165 LONGEDGE LANE
WINGERWORTH.

ASHOVER SHOW 2021

For up to date information, please visit: www.ashovershow.co.uk

CEMETERY

The Ashover Parish Cemetery is a place used by many to remember their loved ones. It is a place of peace and tranquillity and the Burial Board is dedicated to maintaining and preserving the amenity of the area in a manner that is sympathetic to the surroundings.

During the current pandemic of Coronavirus, we have kept the Cemetery open for both visitors and funerals subject to Government guidelines. Social distancing should continue to be maintained at all times and, as per Government guidelines, we anticipate that restrictions may be lifted by 21 June 2021.

The next available section in the Cemetery is being prepared for burials. The regulations have been amended to maximise the efficiency of space used, by only allowing consecutive burials. No pre-reservation of space is allowed in the new section. New footpaths to set out this section have been completed (see picture below).



To preserve the tranquillity of the new area we have closed the unauthorised access through the hedge onto the public footpath. A Tree Survey was undertaken in May 2020 and we continuously monitor our tree stocks for safety.

Woolley Moor Nurseries, a locally based contractor, continues to undertake the grass cutting etc. and will undertake the general maintenance over the coming year. Under a separate contract we continue to weed kill the paths and borders to maintain their functionality.

The Lengthman continues to clear debris and rakes paths to prevent moss formation and a 'Duke of Edinburgh Award' student has volunteered to help the Lengthman keep the cemetery tidy.

Burial records for Ashover Cemetery are digitised and maintained by the Burial Clerk. Original paper records have been archived at the County Archives Office.

Eight memorials have been repaired and reinstated as part of an ongoing programme to preserve the amenity of Ashover Cemetery and several smaller memorials have been stabilised for safety.

A 'Fees and Charges' list and other documentation for the cemetery may be found on the Parish Council's website at: www.ashover-pc.gov.uk.

Cllr Chris Miller

CHAIRMAN OF THE BURIAL BOARD

CHRISTMAS LIGHTS 2020



Much as we love gathering around the Christmas tree and singing carols, seeing Father Christmas and the joy on the children's faces when they receive their Christmas gifts, unfortunately the Parish Council was

unable to put on its usual Christmas lights switch on event in December 2020.

The reason of course was the coronavirus pandemic and the need to protect residents and follow lockdown guidelines.

However, we were able to have a lovely tree with a new Christmas star on top and we are very much looking forward to Christmas 2021 and hopefully a bumper event.

Cllrs Lucy Hunter-Bott and Helen Boffy
CHRISTMAS EVENT VOLUNTEER GROUP

CLIMATE CHANGE

In July 2020, Ashover Parish Council made a declaration to 'acknowledge that climate change is one of the largest challenges facing the world and also recognises that it is a key influencing body that can act on this'. The declaration continued 'Therefore it is essential that this Parish Council helps to proactively facilitate the protection of our local environment, heritage and natural beauty. This needs to be delivered in a way that promotes sustainability, healthy living and also prosperity within the parish. Through this mutually sustainable approach to living in the parish, we can help ensure that it can continue to be enjoyed by future generations indefinitely'.

During the year, the Parish Council has further developed its commitment to addressing climate change. It has held discussions with other local parish councils to share ideas. The North East Derbyshire Climate Action template has been used to confirm where the council is already acting appropriately and to identify immediate actions such as bat and hedgehog boxes in the burial ground. In February, a Climate Change Working Group was approved with councillors and volunteers from the community, to increase the resources and expertise available to progress the climate change initiative. Environmental, Climate Change and Biodiversity policies have also been reviewed or adopted.

Cllr Helen Boffy

COMMON LAND

Your Council continues to monitor common land, carrying out maintenance where necessary. Parish Council approval has been given for some trees on common land to be managed by the Ashover Tree Group.

COMMUNITY CAR SCHEME

The scheme covering Chesterfield, Ashover and Amber Valley is supported by the NHS, Derby City and Derbyshire County Council, CT4TC Community Transport for Town and Country. For more information telephone the booking line on 01773 746652.

COMMUNICATION

If you wish to report on events within the parish to the local press, this can be done via the "Grass Roots" section of "The Derbyshire Times" by e-mailing:- grassroots@derbyshiretimes.co.uk.

COUNTY/DISTRICT COUNCIL LIAISON MEETINGS

County/District/Parish Liaison meetings/events are held during the year, with presentations and liaison on various issues. Your Parish Council is represented at these meetings.

CRICKET CLUB

ASHOVER BARBARIANS CC

Before I comment on cricket matters I would like to pay tribute to John Speight and Jack Bradford who sadly passed away during the pandemic. They were both former players and committee members of our club and we send our condolences to their families and friends. Both John & Jack were genuinely nice people and they will be sadly missed. Like all sporting clubs due to the pandemic 2020 season was difficult for everyone involved. We had to cancel our Friday evening Kwik Cricket, our Sunday morning All Star programme and the whole of our Sunday League Season. However under considerable safety conditions we were allowed to start Saturday senior and some

Junior cricket in early July, which came as a relief for everybody at our newly formed club.

The County Cricket League decided to temporarily restructure their leagues into six team mini sections therefore allowing clubs to play 10 games against their closest rivals geographically. Both our teams enjoyed good seasons with our 1st XL finishing third and our 2ND XL finishing second in their respective sections. Great credit should go to captains Russell Cooke and Jim Carley for their contributions at a very difficult time. When the season finished the existing restrictions unfortunately curtailed the plans we had for social events and our usual routine for winter junior coaching also had to be abandoned.

Although I make it sound that we felt a little "hard done by" during 2020 we realise that because of the enormity of the pandemic millions of people in our country were much worse off than ourselves.

Ashover Barbarians CC would like to take this opportunity to pay tribute to the NHS and all the other people that had a hand in saving our country from an even bigger catastrophe. We hope that the future will bring relief, harmony and peace to people everywhere and that by playing cricket we can bring a little bit of normality into our everyday lives.

Chairman
ASHOVER CRICKET CLUB

DEFIBRILLATORS

Ashover Parish Council has installed six defibrillators at the following locations:-

- *Outside Uppertown Social Centre
- *Outside the medical centre in Ashover
- *In the red kiosk at Alton
- *In the red kiosk at Littlemoor
- *On the side of The Miners Arms, Milltown
- *On the side of The Kelstedge Inn, Kelstedge

Thanks go to Ashover Community Medical Centre Ltd. that has worked in partnership with Ashover Parish Council and supported

the cost of the units via grant aid.

If you need to use a defibrillator remember -

In an emergency, Dial 999 and you will be given the code to the cabinet and further instructions.

If you would like to know more about how the defibrillators work, visit the parish council website and put 'defibrillator in use quick reference guide' into the search box at the top right-hand corner of the homepage or paste the following link into your browser:-
<http://www.ashover-pc.gov.uk/uploads/ipad-sp1-in-use-quick-reference-guide-a4-for-web.pdf>

The above guide is also shown at the back of this booklet.

DISTRICT COUNCILLOR W ARMITAGE (NEDDC)



As I write this review the lock down rules seem to be easing and there seems

to be light at the end of the tunnel. This has been a difficult year for North East Derbyshire District Council. As a Council we have given a great deal of financial support to local businesses and supported vulnerable people in the area, also delivered food parcels and delivered prescriptions. I was personally able to get increased funding for the Citizens Advice Bureau, because there are a growing number of people who have found themselves in a desperate situation having lost their jobs due to the pandemic; this situation will get worse and these people need help, so that was why I asked for more funding. The Council's former recycling contractor has, disappointingly, gone into Administration. However, the Council's officers acted quickly and purchased the recycling lorries, so that we were

able to continue the service; we also took on the employees, so we saved jobs as well. We received £1.8 million from central Government and as a Council, put in a further £8 million to make our houses better insulated, this will be going into 320 council houses. We also gave out a number of Community Action grants and total funding was £10,000; the total for each grant was £500 and Ashover Brass band was successful in gaining £500 for sound recording equipment.

As far as planning goes, we have had the usual number of contentious applications, most of which were dealt with by Committee, which resulted in a more fair and democratic decision. The Local Plan has been delayed due to the pandemic but it will soon come into effect, and a new Enforcement Officer has been appointed to monitor public compliance with planning regulations. The remaining garages at Dovecotes are to be repaired and they will be available later this year, I pushed for the funding and this was granted. I have managed to get many of the potholes repaired, but please report any which you see, this also includes any local flooding problems; again I have reported a number and they have been dealt with very quickly. During the lock down the local shops have done an admirable job in keeping the parish fed, the pubs have also helped by doing take away meals in what has been a very difficult time for them. The Parish, District and Peak Park Councils, all of which I serve on, have all continued to function by using modern technology in the form of 'Zoom' remote meetings, so to that extent it has been business as usual. Let us hope that this pandemic will soon be beaten and in the meantime stay safe.

Regards

William Armitage

DISTRICT AND PARISH COUNCILLOR FOR
ASHOVER WARD

DONATIONS/GRANTS

During 2020/21 your Parish Council donated £1,659.48 as follows:-

- Church Clock & Graveyard Maintenance - £481.60
- Ashover Parish Hall CIO Pavilion Locking System - £500
- Ashover WI 'zoom' subscription - £143.88
- Production of 'Ashover Walks' Booklet donated to Ashover Footpaths and Bridleways Group - £534.00

EMPLOYEES

Your Parish Council employs two people: Sara Atkinson - Parish Clerk/Responsible Financial Officer/Burial Clerk (23 hours per week) and John Bown - Parish Lengthman and Sports Pavilion Caretaker (13 hours per week).

FOOTPATH AND BRIDLEWAY GROUP

The local network of over 50 miles of Rights of Way has seen a huge increase of use over the year, as people look to keep fit and look after their mental health over the Time of Covid. Many have looked to explore some of the less used paths and some of the popular ones have had much use: akin to that in the days when they were the main transport arteries. Many have followed the walks on The Parish Council web site or bought the 'Walks Around Ashover' booklet of walks, sold in the village. The books are financed by Ashover Parish Council and all the profits go to support our group's work.

The County Council has had a major job on its hands with the closure of Vernon Lane, uphill from Kelstedge, as the result of the dangerous state of a retaining wall and subsequent damage done by water erosion, near the same spot. Other repairs have had to be undertaken above Brockhurst Mill, where damage done by cattle to the board walk has had to be made good. The area upstream near The Mill now looks transformed and beautiful thanks to the sterling efforts of the owners of The Mill.

Other landowners have shown a keen

eye on looking after their nearest paths by controlling overgrowth, including a speedy response to clear the path next to Eastwood Grange. New stiles have been put in near Pecklant Farm and a new gate near Brockhurst Farm.

Local volunteers have re-cleared the flagstone path up to Overton and also from The Rattle down to Marsh Green. Another stretch of such 19th century flags has been cleared near Eastwood Grange. Volunteers have also cleared many areas of up growth including near Hilltop. All these tasks are agreed with our hard working and helpful D.C.C. Rights of Way Inspector. The Inspector has also ensured that any blockages of paths (for instance around Uppertown) are only undertaken with due regard to the law. Landowners have been made to remove any illegal blockages. Volunteers have also helped to remove fallen trees from across paths.

The three local County Council sites (Highoredish, The Fabrick and Eddlestowe Lot) have had their environmental plans updated to further protect these special areas. Volunteers work hard to put these plans into action but spend far too much time clearing up other people's litter.

The grant available to the Parish Council for Rights of Way maintenance has been used to keep our bridleways and paths clear of overgrowth and undergrowth. The local contractor, Tom Cartwright, has done a thorough job and especially in remembering the extra head height needed by horse riders!

Since the first Coronavirus lock down there has been a spate of incidents of off-road motorbikes using bridleways (illegally), most particularly in the Milltown/Overton area. Sightings have been reported to the police on their 101 incident number. There has been a general increase in such illegal use throughout Derbyshire and South Yorkshire. Police are actively involved in preventing such activities.

ASHOVER FOOTPATH & BRIDLEWAY GROUP/
BRITISH HORSE SOCIETY VOLUNTEER ACCESS &
BRIDLEWAY OFFICER FOR NORTH DERBYSHIRE

GRIT BINS

Your Parish Council owns and fills a total of 37 grit bins sited around the parish and undertakes winter maintenance of the Milken Lane Car Park.

The salt is supplied for use on the highway adjacent the bin and if you witness large amounts being taken for personal use, please contact the Police.

GROUNDS MAINTENANCE

The maintenance contract with North East Derbyshire District Council continues and includes maintenance of the playing field, borders surrounding the car park, play area and tennis courts, statutory monthly and annual safety inspections. Pitch bookings administration continues to be undertaken by NEDDC. Your Parish Council approved a further 5 year contract with NEDDC commencing in April 2021.

HARD COURTS

The hard courts adjacent Milken Lane Car Park are available for booking at certain times (minimum 10 bookings) by a club or organisation affiliated to a league. Details of Hire Charges are available from the Parish Clerk, on the courts' notice board and on the Parish Council website at: www.ashover-pc.gov.uk.

LITTER

VOLUNTEER LITTER PICK SATURDAY
22/05/2021



Over the last 14 months since the first lockdown many people have commented on the increase

of litter across the parish.

Following the success of the 2020 litter pick, a resident organised a Surfers against Sewage "Million Mile Clean Up" litter pick in May.

Over 30 people, young and old, turned up on a damp, overcast Saturday morning and collected approximately 35 sacks of rubbish including a car tyre, a bike tyre, a kitchen drawer and numerous bottles, cans, food wrappers, face masks and general litter, much of it plastic.

It was an enjoyable morning serving a useful purpose as well as contributing to our community spirit. We also added some miles cleaned to the 'million mile' campaign. We have an increasing number of residents who are litter picking across the parish, some of whom have done so for many years, others have started more recently, which is excellent.

All of this keeps the parish looking smart and tidy and prevents waste getting swept into our water courses, causing environmental damage as well.

The Parish Council donated a number of litter picking tools to the campaign which are available, upon request, to help keep our beautiful parish clean. However, it must be noted that any volunteer litter picking is undertaken entirely at the risk of the individual.

LITTER PROBLEM ON COUNTRY ROADS

Littering is a nationwide problem and 20 years of poster campaigns, TV adverts and voluntary agreements have had little effect on littering behaviour. Some of the problems caused by littering are:

- Damage to vehicle tyres.
- Harm to wildlife, farm animals and pets – the RSPCA receive on average 7,000 calls a year in relation to animals injured by litter.
- Drain blockages.
- Rat infestation.

In towns and cities the council is obliged to clear problem areas of litter but in rural areas councils don't have the resources to clear miles of country roads – research has shown that one mile of road can contain 147 items of litter. Where communities have taken the initiative and formed groups of volunteer litter pickers 'adopting' a section of road

each to keep clear, this has had a big impact on reducing littering and gives the volunteers a real sense of purpose. Please take a look at the CPRE and Keep Britain Tidy websites.

LOCAL COUNCIL AWARD SCHEME

The Local Council Award Scheme exists to celebrate the successes of the very best local councils, and to provide a framework to support all local councils to meet their full potential. All local councils want to serve their local communities and make a real difference to the lives of the people that live there. The scheme offers councils the opportunity to show that they meet the standards set by the sector, assessed by their peers, and to put in place the conditions for continued improvement.

The Award Scheme has been designed to both provide the tools and encouragement to those councils at the beginning of their improvement journeys, as well as promoting and recognising councils that are at the cutting edge of the sector. It is only through the sector working together to share best practice, drive up standards and supporting those who are committed to improving their offer to their communities that individual councils and the sector as a whole will reach its full potential.

Your Parish Council achieved 'Quality' status under the scheme in February 2017 and is seeking re-accreditation in 2021.

MAY DAY CARNIVAL

It is with regret that, for the second year running, we have had to cancel May Day 2021 due to Covid-19 and the tremendous uncertainty. However we are looking forward to preparations for 2022, which will be on **MONDAY 2 MAY 2022**.

Cllr Mrs Rosemary Early

NEIGHBOURHOOD PLANS

Your Neighbourhood Plan has now been in force for over 3 years and is regularly referred to by Planners, Developers, Parish Councillors and the Planning Inspectorate in

relation to Planning applications. It has been used to both help gain approval and also as an aid when there are objections to an application.

There are currently some changes which need to be made to the Neighbourhood Plan but we are awaiting the outcome of the referendum, which is due shortly, on the North East Derbyshire District Council (NEDDC) Local Plan. If and when the NEDDC plan gains approval there will be a need to make some changes as the Local Plan sits above the Ashover Neighbourhood Plan in the planning hierarchy. These changes will be published on the Parish Council website so all the Parishioners will get a chance to view and comment on the changes. In addition to Planning, the document also covers other aspects of life in the Parish including, amongst other things, Jobs and Economy, Community Facilities and Shops, Design and Built Heritage, Environment and getting around the Parish.

Cllr Richard Fidler

NEDDC LOCAL PLAN 2014-2034

For up to date information on North East Derbyshire District Council's Draft Local Plan 2014-2034, please visit the NEDDC website at www.ne-derbyshire.gov.uk

NEWSLETTERS & SHARING PARISH NEWS

Your Parish Council issues four Newsletters per year, the first of which is the Annual Report of the Parish Council which is circulated to every household in the parish and published on the website. The other three Newsletters may be found on the website at www.ashover-pc.gov.uk You'll find that Ashover Parish Council's web-site (www.ashover-pc.gov.uk) is pretty much an information hub for what's going on around the parish. Apart from formal content such as information about the Council, its meetings and Minutes, Planning (including the Neighbourhood Plan). It's through the News section that you'll see

bulletins from Derbyshire County Council, North East Derbyshire District Council, Derbyshire Police etc.

If you have any suggestions on ways in which we could improve what we offer we'll of course be pleased to receive them.

OIL BUYING SCHEME

Rural Action Derbyshire (RAD) is a charity set up in 1924 to support rural communities in Derbyshire. One of their current projects is running a community bulk oil buying scheme.

Oil prices are extremely low at the moment which is good news for oil users. RAD can make cheap oil even cheaper through this bulk buying scheme.

The scheme is open to anyone using Kerosene28 for their heating – households, businesses or community buildings.

There is NO registration or annual membership fee. The scheme is run online where members can register, order and pay for their oil. If you are one of the 20% of rural Derbyshire that do not use a computer or have reliable access to the internet then you can manage your account through the Project Manager at RAD.

There is no obligation to buy your oil through the scheme, you can dip in and out of it depending on your needs. RAD will always be able to negotiate a better oil price than you would be able to arrange with a supplier in the same period due to the quantity they are negotiating with.

RAD orders oil once a month on behalf of their 'members' and negotiate with up to 8 oil suppliers for the best possible price.

For more information on the scheme please contact the Project Manager, Emma Simpson at RAD on 01629 592970 / 0845 313 8800, email oil@ruralactionderbyshire.org.uk or visit the RAD website: www.ruralactionderbyshire.org.uk/oil

RURAL ACTION DERBYSHIRE
Town Hall, Matlock, DE4 3NN.
Charity No: 1061531.

PARISH APPEARANCE/MAINTENANCE

The flowerbeds adjacent 'The Black Swan' and the public toilets are maintained under contract for the Parish Council. The Lengthman continues to pick litter around the parish with the help of volunteers and reports on fly tipping, carries out general maintenance on parish owned street furniture and undertakes health and safety inspections on Parish owned property and cleaning of the Public Conveniences on Moor Road, Ashover. In Spring 2021 the Parish Council hard courts were pressure washed, sealed, surface painted, lined and new tennis nets purchased.



PARISH COUNCILS AND MEETINGS

Parish councils and parish meetings work towards improving community well-being and providing better services at a local level. Their work falls into three main categories: representing the local community;

- representing the local community;
- delivering services to meet local needs; and
- striving to improve quality of life in the community.

Through a range of powers, parish councils provide and maintain a variety of important and visible local services including allotments, bridleways, burial grounds, bus shelters, car parks, commons, community transport schemes, crime reduction measures, footpaths, leisure facilities, local youth projects, open spaces, public lavatories, planning, street cleaning, street lighting, tourism activities, traffic calming measures, village greens and litter bins.

Residents are welcome to attend and speak at Parish Council Meetings under the 'Public' section. Parish Council Meetings are held on the third Tuesday of every month (except August when no meeting is held) in The Sports Pavilion, Milken Lane, Ashover and

commence at 7.15pm. During the coronavirus pandemic, Parish Council Meetings have been held remotely at 6.30pm via the 'Zoom' platform and members of the public have attended using the log-in details provided on the agenda. Public Speaking is invited for the first fifteen minutes of every meeting, when anyone from the parish may raise any issue with the Parish Council. A copy of the Agenda, together with notification of planning applications, Parish Clerk's Report, Minutes of the previous meeting and other information may be found on the Parish Council website: www.ashover-pc.gov.uk and the main notice board on Moor Road. A summary of each meeting is published in 'The Derbyshire Times' "Grassroots" section and is also available on the Parish Council website along with other press releases.

PARISH COUNCIL SURGERIES

These are presently held at 7.00pm for fifteen minutes prior to every Parish Council Meeting. Parishioners are encouraged to attend and express any concerns they may have on parish issues to a Parish Councillor and the Parish Clerk if they are unable, or do not wish, to attend and speak at the main meeting under 'Public Speaking'. Surgeries have not been held during the coronavirus pandemic, but members of the public have been invited to telephone questions etc. to the Parish Clerk.

PARISH HALL

2020 proved to be one of the quietest for Ashover Parish Hall, due to the coronavirus pandemic. For most of the year the hall was either in lockdown or operating under strict coronavirus legislation and Government guidelines. As and when restrictions begin to lift, the hall will once again operate to provide a welcoming facility for all kinds of clubs, events and celebrations.

We have as always, had the pleasure of hosting many wonderful weddings, birthday and anniversary celebrations. The hall has also been

a great base for local businesses to hold training and conferences.

We would be happy to provide you with further information on any of these existing groups, as well as offering advice and assistance with marketing should you wish to start a new class yourself.

We would also be happy to help you plan any party, wedding or other event. So contact us and come and have a look around at what we can offer.

Please take a look at our website www.ashoverparishhall.com or social media pages (Facebook & Instagram) which provides pricing and information on hiring the hall, a photo gallery for inspiration with your own event, with a new online calendar facility to check the availability of our function rooms. Please look out over the coming year for some more great community events.

To get in touch:

Tel: 01246 590005

Email: info@ashoverparishhall.com

Website: www.ashoverparishhall.com

Manager

ASHOVER PARISH HALL EVENTS CENTRE

PAROCHIAL CHURCH COUNCIL

For All Saints Church at Ashover, as for everyone, 2020 was very different from previous years as a result of the Covid-19 pandemic. Sunday services in church were suspended from mid-March to August, then again in November and after Christmas Day. During these suspensions, recorded services could be viewed online, initially on the Acorns and Allsorts YouTube channel and later on the All Saints Ashover For Amber Churches YouTube channel, which could also be accessed through the Amber Churches website www.amberchurches.org. The Christmas Eve Family Carol Service, when the church is usually full, was also held online only in 2020. 8 funeral services were held in Ashover Church in 2020 and all but 1 of the 17 wedding services booked for 2020 were either postponed or cancelled.

The children's groups (Allsorts, Acorns and

SmARTies) met when permissible, providing age-related activities whilst sharing the good news from the Gospel.

As in previous years, the church has supported financially a number of overseas missions and relief agencies, as well as various local and national charities. During Lent, weekly Lent courses were run, moving from actual meetings to Zoom meetings and Lent lunches were held on 2 Sundays before they too had to be cancelled due to Covid-19 restrictions. Donations collected at the Lent lunches went to Water Aid and Chesterfield Night Shelter.

Visits to Grove Park and Grove House residents also had to be suspended due to Covid-19 restrictions; this was also the case for the Village Coffee Shop, Film Time and Knit n' Natter, all of which were initiated by the church as means of outreach to the local community. While the Pantomime and Parish Party went ahead as usual in January 2020, the 2020 and 2021 May Day Carnivals and the 2021 Pantomime and Parish Party have had to be cancelled.

The other major event in the life of Ashover Church and the other Amber Churches (Brackenfield, Handley and Wessington) in 2020 was the retirement of Reverend Ralph Lawrence at the end of September. During the vacancy, Sunday services (whether live or online) have been provided by the Ministry Team and Churchwardens, as well as a retired Minister. The Diocese of Derby has informed us of its intention that the replacement for the Rector will be a part-time Priest-in-Charge.

The Amber Churches website (www.amberchurches.org) continues to provide information, news and a calendar of upcoming events. The Amber Churches also produce a monthly newsheet, Amber News, which is available free of charge at the Post Office and some local shops, as well as being accessible on the Amber Churches website.

During the year work was completed on the external refurbishment of the Bassett

Rooms gardens and new access to the front. No major works were required on the church building in 2020.

Ashover PCC Secretary

ALL SAINTS CHURCH, ASHOVER

Parochial Church Council of the Ecclesiastical Parish of All Saints Ashover.

Registered Charity Number 1174119.

PLANNING

Your Parish Council is one of several consultees whose comments are sought by the District Council on planning applications. Unless applications are received after agenda issue, those to be considered by the Parish Council are listed on Appendix I which is published with the agenda and posted on the main notice board and on the website. Applicants are encouraged to address the Parish Council, either in person or in writing, when their application is to be considered. Details of all applications, including associated documents, may be found on the District Council's website at www.ne-derbyshire.gov.uk.

PLAY AREA PROJECT

It was in early 2020 that, with the full support and encouragement of the Parish Council, a project team was formed comprising Councillors Lucy Hunter-Bott, Steve Dronfield and Mike Thomas along with Clerk, Sara Atkinson. Their brief was to carry out a review of the playground facilities in Ashover and present costed options with recommendations for consideration by the Parish Council.

Unfortunately, Covid-19's lockdown from March 2020 meant that initial planning had to be put on hold and it was July before the team was able to resume work. An Invitation to Tender (ITT) was released soon afterwards. Basically, this is a document which gives guidance to interested companies in the form of a design brief and the budget they need to be working to.

In mid-September 2020 we received the

results and, with Sara acting as moderator, Lucy and Mike debated which designs offered the best combination of imaginative design and value for money. From this, we arrived at a short list of two companies and at this point we asked Steve (our Parish Councillor Auditor) to vet the processes we had gone through and confirm he was satisfied these had been fair, open and transparent. Having received Steve's approval, we then presented our conclusions and recommendations at the October Parish Council Meeting. Our recommended choice of KOMPAN was approved.

We did wonder how much the weather and Covid-19 might get in the way of installation to the December 2020 target, but full credit to KOMPAN for keeping things on track through to completion.

We must also put on record our gratitude to the trustees of Ashover Community Medical Centre Ltd for their generous grant of £12,000 towards the cost of the upgraded playground. It was much appreciated.

WORKING GROUP



Before



After

POTHoles, PAVEMENTS & OTHER PROBLEMS

Derbyshire County Council has a facility for reporting problems with potholes, pavements, flooding, gritting, street furniture etc. Visit the DCC homepage at www.derbyshire.gov.uk and click on 'report a road fault' etc. then follow the links to the online fault reporting form. After entering details, including an opportunity to upload a photo of the problem, you will be given a reference number, enabling you to keep track of action taken by DCC.

PRIMARY SCHOOL - *Aspire & Achieve*

- **Achieve**
- **Safe**
- **Positive**
- **Independent**
- **Respect**
- **Enjoy**

I write this article as we come to the end of our sixth week of our second school lockdown due to the devastating Covid19 pandemic. During this latest lockdown the school has provided onsite learning to vulnerable children and those of critical workers whilst also providing live lessons daily to those children who have been at home. The Spring sees the return of all Primary pupils to school and we are very keen to get all children settled into their school routine and to learning in their classroom with their friends. Our school staff have worked extremely hard to provide a blended learning offer and our parents have been incredibly supportive of both their children and the school during this difficult period.

The last 2 academic years have been very disruptive to normal school life. The children have missed out on going out of school on educational visits, swimming and music lessons as well as having the opportunity to sit their statutory tests. As advised by the DFE, we will continue to assess the children informally in school and support them in catching up on any lost learning that school closures have created.

At the start of the school year, the restrictions did allow us to take our children on our annual Rainbow Walk where all pupils dressed in t shirts to represent the colours of the rainbow and walk 3 miles through our beautiful Parish and raise much needed funds for Friends of Ashover School.

At our recent AGM of Ashover Friends of the School, it was agreed that we would begin fundraising for our next big project following on from the success of the Project Playground initiative which raised vital funds towards the cost of the playground resurfacing. The next fundraising project will be for Project Craft Room. Our building is very old and many classrooms don't have adequate space in which to store art/craft equipment and sinks. We intend to use the funds to change our IT suite into a craft room with ample storage and washing up facilities whilst still being able to house portable devices for children to engage in computing lessons in their classrooms.

Although we have not been able to take children out to sporting events, we have continued to allow sports coaches into school and the children have been taught a range of new sports including fencing, hockey, bench ball and vital fundamental skills.

On the return of all Primary pupils to school on 8th March we are keen to reintroduce as many of our school activities within current restrictions. We will continue to offer Forest School sessions on our school field to all pupils and allow music, language and sports teachers into school to offer the children the extra-curricular activities that they enjoy so much.

One of our school governors has worked extremely hard with the school this year to endeavour to improve road safety at school pick up and drop off times. He has created a range of proposals which have been shared with the Parish Council and consulted to seek the views of parents and residents. The Parish Council have submitted these proposals to the DCC highways team who have in turn agreed one or two of the road safety propos-

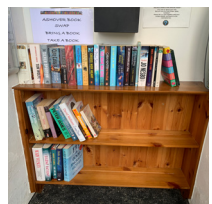
als. School governors have now provided feedback to both DCC and the Parish Council on the proposed changes. As a school, we will continue to do all that we can to keep the whole school community safe on the roads in and around school.

The children have provided very positive feedback on the new play area by the Parish Hall. Some of our pupils contributed design ideas and are more than happy with the newly built play area.

We endeavour to continue to provide our pupils with a high quality education at our school. Please feel free to contact us should you have any queries at enquiries@ashover.derbyshire.sch.uk or 01246 590207.

HEADTEACHER
ASHOVER PRIMARY SCHOOL

PUBLIC CONVENIENCES



Following threat of closure by the District Council in 2008, the old stone public conveniences on Moor Road were taken over by the Parish Council and refurbished in 2013,

including the redundant telephone kiosk in the small room at the front of the building, which was turned into an Information Point featuring parish news, attractions, maps, details of local walks and now a 'Book Swap' corner. Ashover is believed to be one of the few parish councils to accept responsibility for upgrading and maintaining its public conveniences.

PUBLIC SPACE PROTECTION ORDER (PSPO)

Dog mess is unfortunately an unpleasant aspect of dog ownership. It is every owner's duty to clean up after their dog – there is no excuse for leaving it behind. North East Derbyshire District Council is committed to ensuring that dog owner's act in

a responsible way. Enforcement of the PSPO was due to begin in March but it has been delayed due to the coronavirus pandemic. As well as introducing a number of new offences relating to dog control, the fine for failing to clear dog mess will be increased to £100.

Residents should be encouraged to report breaches of the PSPO to the council via 01246 231111 or by email to environmentalhealthadmin@ne-derbyshire.gov.uk and the dog wardens will investigate, issuing fines if necessary.

For more information on PSPO's etc. visit: <https://www.ne-derbyshire.gov.uk/environmental-health/animals-and-pests/dog-management-pspo>

Ashover Parish Council has provided 11 dog bins sited around the parish and these are located as follows:-

ASHOVER – Moor Road, Church Street, Narrowleys Lane, Dovecotes entrance to field, Cricket Pavilion, Milken Lane car park, The Fabrick, Cemetery.
OVERTON – near right of way.
KELSTEDGE – Westedge Close.
LITTLEMOOR – adjacent bus shelter.

RIGHTS OF WAY

These are ultimately controlled and maintained by Derbyshire County Council. The Parish Council undertakes minor works via its Minor Maintenance Agreement (MMA) with DCC. If you wish to report any issues relating to rights of way there is an online facility at www.derbyshire.gov.uk/prow Furthermore, you can view the entire rights of way network by visiting the Council's website and searching for 'Mapping Portal' where visitors can view a wealth of information, including Rights of Way. Information relating to Modification Orders may be viewed here: <https://apps.derbyshire.gov.uk/applications/right-of-way/>

During 2020/2021 your Parish Council used its total Minor Maintenance budget of £675

on minor maintenance to rights of way around the parish (path nos. 23,48,77,134,135,136,145,151,153).

SCAMS



Derbyshire Police has issued the following advice on how to better protect yourself against unwanted calls:-

*Be sceptical
Take your time*

*Know who you are dealing with
Protect your financial information*

If you want assistance in finding out if it is a scam contact Consumer Direct on 08454 04 05 06.

If you want to cut the junk contact:-
Mailings - 0845 703 4599 or www.mpsonline.org.uk (Registration is free)
Telephone Calls - 0845 070 0707 or www.tpsonline.org.uk (Registration is free).

You can also contact your telephone company to block callers who withhold their number.

Text/SMS - 0845 070 0707 or www.tpsonline.org.uk. If you then receive a message you don't want you can reply with the word STOP.

Email - if you would like advice go to www.getsafeonline.org

IF IT LOOKS TOO GOOD TO BE TRUE, IT PROBABLY IS.

Derbyshire County Council Trading Standards and Citizens Advice North East Derbyshire are working together to highlight the problems of scams and fraud, through Derbyshire Scam Watch.

Scams affect the lives of millions of people across the UK. People who are scammed often experience shame and social isolation as a result. Scams come in many forms; uninvited contact is received by email, letter, and many of these sorts of scams but some of the most common are fake lotteries, deceptive

prize draws or sweepstakes, clairvoyants, computer scams, and romance scams. The criminals attempt to trick people with flashy, official looking documents or websites, or convincing telephone sales patter, with the aim of persuading them to send a processing or administration fee, pay postal or insurance costs, buy an overvalued product or make a premium rate phone call. Doorstep Scams are crimes carried out by bogus callers, rogue traders and unscrupulous sales people who call, often uninvited, at people's home under the guise of legitimate business or trade. Derbyshire Scam Watch is urging members of the public to be aware of the issues and to be alert if they feel friends or relatives are vulnerable to such frauds. Trading Standards nationally are promoting a campaign called 'Friends Against Scams'. This includes 30 minute online learning package will help people to learn more about the issues.

If you like would like to talk to someone about scams then please contact scamwatch@nedcab.org.uk You can report your suspicions about any scam to Citizens Advice Consumer Helpline on 03454 040506

Report fraud and internet crime to Action Fraud – www.actionfraud.police.uk To learn more about scams and become a 'Friend Against Scams' – go to <https://www.friendsagainstscams.org.uk/>



SPEED AWARENESS

In 2014, eleven parish councils in the North East Derbyshire area clubbed together to provide a speed camera for police to use in a joint bid to make local roads safer. Ashover, Brampton, Heath and Holmewood, Morton, North Wingfield, Pilsley, Shirland and Higham, Stretton, Sutton cum

Duckmanton, Tupton and Wingerworth parish councils have all contributed to the campaign and provided funding for the camera and its maintenance. The camera is deployed, on average, once a week in one of the partnership parishes. Police Officers using the device informed councils that it is an excellent tool in tackling the issues of speeding in our areas.

To contact your local Safer Neighbourhood policing team call 101, or visit the website: www.derbyshire.police.uk.

Your Parish Council is campaigning to make the A632 through Kelstedge safer and Kelstedge residents have volunteered for the Community Speed Watch initiative. Your Parish Council requested that the highway authority provides fixed speed cameras at Kelstedge, however, the highway authority did not consider this to be justified and gave the following information:-

“Following criticism of safety cameras it is essential that there is robust justification for the use of this method of speed control to ensure the continued public acceptance of them. As you will probably aware, speed enforcement is carried out by the Casualty Reduction Enforcement Support Team (CREST) as part of the Derby & Derbyshire Road Safety Partnership. They are committed to reducing the number of people killed and seriously injured on our county’s roads and are continuously working towards making our roads safer, through intelligence led enforcement, education and engineering. For further information regarding speed enforcement in Derbyshire please visit the CREST web site: www.crestderbyshire.org”

At the Parish Council Meeting held in April 2021, Members agreed to support the ‘20’s Plenty’ campaign. 20’s Plenty for Us is a ‘not for profit’ organisation with 500 local groups campaigning to make cities, towns and villages around the world better places to be. They campaign for a speed limit of **20mph to be normal** on residential streets and in town and village centres, unless full consideration of the needs of vulnerable road users allows a higher limit on particular streets. For more information visit:

<https://www.20splenty.org/>

The General Assembly of the United Nations endorses 20mph or 30km/h speed limits where people mix with motor vehicles, unless strong evidence exists that higher speeds are safe.

Your Parish Council has purchased 10 wheelie bin stickers to give away showing the 20’s plenty logo; please email the Parish Clerk and say where you think this campaign could make a real difference to parish safety. A copy of a ‘20’s Plenty’ poster may be found at the back of this booklet.



STREET FURNITURE/PROPERTY

A rolling programme continues to operate for the maintenance of parish owned street furniture, including parish seats, bus shelters and notice boards and parish owned property. Where possible, the maintenance work is carried out by the Parish Lengthman as part of his duties and other work, such as vegetation strimming around some seats, is carried out under contract. Risk assessments and inspections have been undertaken in accordance with legal requirements.

SUBSCRIPTIONS

Your Parish Council continues to subscribe to the Derbyshire Association of Local Councils (DALC) and the Institute of Cemetery & Crematorium Management (ICCM) on an annual basis. DALC offers free legal and professional advice on all aspects of parish and town council business backed up by experts at NALC (National Association of Local Councils) and regular information circulars. Likewise ICCM also offers free advice to its members and regular newsletters.

TENNIS CHESTERFIELD COACHING REPORT 2020/2021

ASHOVER PARISH COURTS

Tennis coaching returned to Ashover Parish Courts post the first lockdown with just individual coaching sessions allowed in May, June and July 2020, which took place in the regular slots that the coaching programme would use on Tuesday evenings 4-8pm. A summer holiday camp was run for children aged 7 to 15 in August, where numbers were limited to 10 players to adhere to Government guidance at the time but it was great to see the children in enjoying tennis at Ashover again!

The Tuesday evening group coaching restarted in September with government guidelines now allowing for group coaching to take place. The programme was stop-start through the autumn and winter months with the second lockdown in November and then the third in January through to March and it is great credit to the players in the programme that kept coming through these difficult times - let alone the winter weather!

From 29th March 2021, group coaching was allowed to start again and the commitment from the current players and take-up from new people getting involved has been fantastic to see. The overall numbers on the Tuesday evening programme now stands at 50 players (up from 32 compared to the last summer period.) See below for a full rundown of classes and numbers.

- 4-5pm Blue Stage (4-6 yrs) - **8 players**
- 4-5pm Red Stage (6-8 yrs) - **9 players**
- 5-6pm Orange Stage (8-9 yrs) - **5 players**
- 5-6pm Green Stage (9-10 yrs) - **5 players**
- 6-7pm Yellow Stage (11-18 yrs) - **12 players**
- 7-8pm Adult Group (18+ yrs) - **11 players**

Additionally, an Easter holiday camp took place in April that provided the opportunity for 24 children of ages 4-15 take part all week – the biggest turnout at an Ashover Holiday

Camp. Two summer holiday camps are due to take place in August - please see below for the dates:

Week 1: 2-6 August 9am-12noon
Week 2: 16-20 August 9am-12noon
Free use of the hard courts for the junior holiday camps is provided by Ashover Parish Council, to support youth sport in the parish.

Having recently developed good links with local schools to Ashover, there are plans in place to re-engage these relationships by providing curriculum coaching, tennis roadshows and driving more participation to Ashover Parish Courts in the near future.

All information regarding Ashover holiday camps and coaching programme can be found at <https://tennischesterfield.co.uk/>

If you are interested in joining the coaching programme then please feel free to give Jonny a call on 07759816466 or email Jonny on jonny@tennischesterfield.co.uk and he will be able to offer you a FREE taster!

TENNIS CLUB

For full details of how to join please contact Ashover Tennis Club via email: ashovertennis@btinternet.co.uk. Further details about the club can be found on the Ashover Tennis Club website: <http://ashovertennisclub.btck.co.uk>

TREE WARDEN

This has been a strange year all round. Ash Dieback is starting to affect most Ash trees in the parish and will steadily change how the environment looks in the future, but we can still do something about our woodlands in general.

In last year’s annual report I mentioned that, in February 2019, we had submitted a blanket tree preservation order application for woodland around Milltown. Since then we chased North East Derbyshire District Council for progress until March this year

when, without any warning, a Tree Preservation Order was imposed. The lack of consultation was in line with procedure, because prior notice might tempt landowners to fell trees in advance of the order. The sudden imposition of the order caused some strong reaction on social media, and Ashover parish council wrongly interpreted the process, believing that prior consultation was appropriate. This was difficult because the parish council had previously given their support to the plan in 2019. As a result of feedback on the application, a modified map was put forward no longer including domestic properties but concentrating on Cockerspring wood and Stars wood, both held by Stenfold Resources Ltd. I would like to thank those who wrote in to the planning department expressing their opinion by using the democratic process available to them. I understand the next step is that the order will be considered by North East Derbyshire District Council's planning committee, when a decision will be taken either to confirm or withdraw the order.

Linda Stephenson
ASHOVER PARISH TREE WARDEN

RESPONSE FROM ASHOVER PARISH COUNCIL TO TREE WARDEN'S COMMENTS:-

At the Ashover Parish Council Meeting held 16 March 2021, the following statement was made regarding the proposed Milltown Tree Preservation Order and recorded in the Minutes of that meeting.

"At a Parish Council Meeting held in March 2019, Ashover Tree Group put forward a proposal for a Tree Protection Order for an area covering part of Milltown in accordance with the national 'Tree Charter' initiative, which was supported by Members, and in June 2019 it was agreed that the proposal would be included in the Ashover Parish Neighbourhood Plan Review. At this time Ashover Tree Group had been a working group of Ashover Parish Council since 2015.

In September 2019, Ashover Tree Group reported

that the Milltown TPO had been rejected by North East Derbyshire District Council and the group had lodged an Appeal against the decision. In November 2019 Ashover Parish Council sent an email to the Planning Authority requesting that it responds to the Tree Group's Appeal application.

On publication of the Neighbourhood Plan Review in November 2019, it was brought to Members' attention that no consultation on the Milltown TPO proposal had taken place with landowners. As a consequence, that part of the Neighbourhood Plan Review was withdrawn, as shown in Minute 192/19 of the Parish Council Meeting held in December 2019.

At the Parish Council Meeting held in June 2020, it was resolved that Ashover Tree Group would cease to be a working group of Ashover Parish Council with effect from 01 July 2020 to enable it to work freely on projects without procedural and insurance limitations. At that meeting, a tree group representative gave an overview of the proposed Milltown TPO and that it was being progressed with the District Council by the Group."

At the same Parish Council Meeting, when the proposed Tree Preservation Order for Milltown came before Ashover Parish Council for consideration, Members resolved:-

"That North East Derbyshire District Council revokes the Tree Preservation Order no. NEDDC/TPO278/2021 and that full consultation and discussion is undertaken with all landowners affected by the proposal, prior to any further Tree Preservation Order being issued by the District Council on the Milltown area and parish."

TRUSTED TRADER SCHEME (Derbyshire County Council)

Finding a company that you can trust to do some work for you can be a bit daunting – how can you be sure that you won't get ripped off? What if things go wrong? How do you choose between lots of different companies? These sorts of dilemmas were a driving force behind the setting up by Derbyshire County Council of the Trusted Trader scheme to help local people find traders and businesses that do a good job at a fair price and provide good customer service.

That was back in 2008 and the popular

scheme has gone from strength to strength. These days there are nearly 17,000 searches each month on the Trusted Trader website, www.derbyshire.gov.uk/tt by people looking for reliable companies to use. Another ringing endorsement for the scheme was a recent survey which gathered feedback from more than 16,000 people who had used a Trusted Trader and an impressive 94% said they were very satisfied with the service they received.

So people can have lots of confidence when employing one of the 1,200 traders who are part of the scheme. In the very unlikely event of someone having a problem with one of the traders then help is at hand. Derbyshire County Council trading standards officers can get involved in any queries involving Trusted Traders and seek to resolve them.

The scheme particularly helps to protect older and vulnerable adults by making it easier for them to use Trusted Traders rather than rogue traders who typically cold-call and use high pressure sales techniques. A recent development has been the inclusion of Financial Advisors who specialise in providing financial advice for people in later life and can help with matters like care fees, pensions and investments.

Find out more about all aspects of Trusted Trader at www.derbyshire.gov.uk/tt or call 01629 536148. Enquiries are also welcome from businesses interested in signing up to the scheme.

DERBYSHIRE COUNTY COUNCIL

UPPERTOWN SOCIAL CENTRE

The Centre provides a first class facility for social activities for the people of Ashover and surrounding areas. It has comfortable and up to date facilities for parties, birthdays, weddings and other special occasions but is equally suited to conferences, training sessions or meetings.

Facilities include:

- Licensed bar
- Fully fitted kitchen for outside caterer or hirer use
- Function room for up to 120 people

- Car parking for 25 cars (this area can be used to erect a marquee)
- The Centre is run on a not for profit basis as a charity, which would not be possible without the committee of local people and a group of willing volunteers. For information on events visit: www.uppertown.org or telephone 07966 154798.

WAR MEMORIAL



Your Parish Council continues to maintain the War Memorial and lays a wreath each year and displays large poppies around the parish to remember those who lost their lives in all wars.

WASTE RECYCLING (Derbyshire County Council)

Household Waste Recycling Centres (or Civic Amenity Sites) are provided by the county council for the disposal of waste produced from households which is either too large or too bulky to be accepted by the normal district council weekly collection. Your nearest site is located at Stonegravels, Sheffield Road, Chesterfield which has full recycling facilities. The site is open seven days a week from 8.30am – 6.00pm (closed 25/26 December and 1 January).

DERBYSHIRE COUNTY COUNCIL
01629 580 000

WEBSITE – www.ashover-pc.gov.uk



Your Parish Council's website is www.ashover-pc.gov.uk, and is the gateway into the parish council and numerous local services, from there you can also find links to other organisations including North East Derbyshire District Council and Derbyshire County Council.

The site contains, along with many other things, items of news, advice of road closures in the parish, links to leisure facilities, you can even have a look at your Parish Councillors and Parish Council staff. There are links to your Local Councillor, District Councillor and Member of Parliament.

There are calendars for council meetings and events and leisure activities taking place in the Parish.

There are forms to report problems and issues within the Parish, there is an A-Z link where there is a whole raft of information about the Parish, County and District Councils.

Why not take a look at

www.ashover-pc.gov.uk

You can also find us on Facebook and Twitter.



FINANCIAL REPORT PRECEPT 2021/2022

At the Parish Council meeting held on 20 October 2020, consideration was given to the recommendations of the Finance Committee for the precept application for 2021/22.

The Finance Committee had deliberated each code and cost centre in the accounting system, recognising the need to limit expenditure as far as possible due to current restraints and economic climate and taking into account a realistic income figure. The 12 to 16 year Capital Assets Renewal Programme continued to be included in the precept sum and this would be revised to reflect ongoing capital expenditure and to include new capital purchases. Members recognised the requirement to retain six months precept reserves at all times, whilst being aware of access to earmarked reserves.

No further Tax Support Grant Funding would be received from North East Derbyshire District Council.

The Precept figure for 2020/2021 was £81,832.00 and an unexpected Tax Support Grant of £578.26 had been received from North East Derbyshire District Council.

Having deliberated the budget for the Financial Year 2021/2022, an anticipated realistic income figure of £13,670.00 set against an anticipated expenditure figure of £85,067.00 plus earmarked reserves of £11,972.00, produced an annual **Precept figure for 2021/2022 of £83,369.00**. This represents a £1,537.00 increase (approx. 1.87%) on the previous year due to lack of support grant, increased costs for parish maintenance generally and inclusion of an ongoing budget for election costs.

COST CENTRE	ANTICIPATED FIGURES			
	Exp. 2020/21	Inc. 2020/21	Exp. 2021/22	Inc. 2021/22
	£	£	£	£
Administration	40066	2820	40302	2570
Section 137	800	0	600	0
Pavilion/Courts	3710	1040	5250	1040
Public Toilets	2200	0	2200	0
Capital Projects	10365	0	10472	0
Allotments	100	60	300	60
Cemetery	10150	10000	10650	10000
Parish Maintenance.	28361	0	27265	0
TOTALS	95752	13920	97039	13670
PRECEPT	2020/21	£81,832	2020/21	£83369

Summary Receipts & Payments Year Ended 31 March 2021

(Awaiting External Audit)

Year Ended 31 March 2020		Year Ended 31 March 2021
Receipts		
78727.00	Precept Received	81831.00
658.67	Interest Received	713.14
79385.67	Total	82545.14
Operating Income		
5963.30	Administration	35367.07
1803.45	Pavilion	960.65
60.00	Allotments	60.00
21835.00	Cemetery	15420.00
3159.73	VAT	8059.90
112207.15	Total Receipts	142412.76
Running Costs		
31529.18	Administration	36004.07
282.00	Section 137	643.88
3602.78	Pavilion	2897.77
3172.78	Toilets	3422.27
2751.09	Capital Projects	42681.82
400.00	Allotments	197.16
10277.02	Cemetery	9873.59
30744.41	Parish Upkeep	30528.34
8059.90	VAT on Payments	16231.07
90819.16	Total Payments	142479.97

Summary Receipts & Payments Year Ended 31 March 2021

(Awaiting External Audit)

Year Ended 31 March 2020		Year Ended 31 March 2021
Receipts & Payments Summary		
103686.23	Opening Balance	125074.22
112207.15	Add Total Receipts	142412.76
215893.38		267486.98
90819.16	Less Total Payments	142479.97
125074.22	Closing Balance	125007.01
Cumulative Funds represented by:		
49482.75	Current/Reserve Account	48778.66
75591.47	National Savings Account	76228.35
125074.22		125007.01

YOUR PARISH COUNCILLORS - ELECTED 02 MAY 2019



William Armitage
Green Bank
Hockley Lane
Ashover
CHESTERFIELD
S45 0ER
01246 590486



John Cook
(co-opted June '21)
Farhill House
Milken Lane
Ashover
CHESTERFIELD
S45 0BB



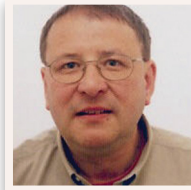
Steve Dronfield
Willow Tree Farm
Hungerhill Lane
Stonedge
CHESTERFIELD
S45 0LP
01246 590721



Lucy Hunter-Bott
Marshbrook
Butts Road
Ashover
CHESTERFIELD
S45 0HW
07976 733607



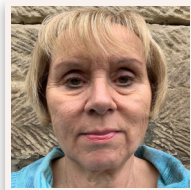
Nigel Early
Lexley Gables
Hockley Lane
Ashover
CHESTERFIELD
S45 0ER
01246 590738



Chris Miller
Hill House
Hill Road
Ashover
CHESTERFIELD
S45 0BX
01246 590253



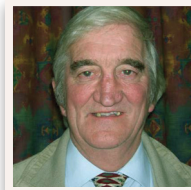
Rosemary Early
Lexley Gables
Hockley Lane
Ashover
CHESTERFIELD
S45 0ER
01246 590738



Helen Boffy
Langford House
Narrowleys Lane
Ashover
CHESTERFIELD
S45 0AU
07515 280707

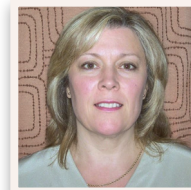


Richard Fidler
Porthlea
Alton Lane
Littlemoor
Ashover
CHESTERFIELD
S45 0BE
01246 590155



Ed Willmot
The Pines
Hill Top Road
Ashover
CHESTERFIELD
S45 0BZ
01246 590260

YOUR PARISH COUNCIL STAFF



Sara Atkinson
Parish Clerk & RFO
The Sports Pavilion
Milken Lane
Ashover
Chesterfield S45 0BA
01246 863018

parishclerk@ashover-pc.gov.uk



John Bown
Parish Lengthman

YOUR COUNTY AND DISTRICT COUNCILLORS



Barry Lewis
DCC Councillor
2 King George Street
Wessington
Derbyshire
S55 6DZ
01773 830871
Mobile: 07920484207



William Armitage
NEDDC Councillor
Green Bank
Hockley Lane
Ashover
CHESTERFIELD
S45 0ER
01246 590486

For information and help on the following services, please call the appropriate authority (details at the right of this page) or visit www.ashover-pc.gov.uk and click on the A-Z of services :-

Bulk Waste Collection Service	NEDDC
Bus Shelters	APC
Car Park (Milken Lane)	APC
Cemetery (Ashover)	APC
Council Tax	NEDDC
Common Land	APC
Dog Waste Bins	APC
Dog Wardens	NEDDC
Education	DCC
Energy Advice Centre	NEDDC
Environmental Health	NEDDC
Fly Tipping	NEDDC
Grit Bins	APC/DCC
Highways	DCC
Housing	NEDDC
Libraries	DCC
Licensing	NEDDC
Parish Plan (Ashover parish)	APC
Parish Seats	APC
Pest Control	NEDDC
Planning Permission	NEDDC
Play Area (Ashover)	APC
Playing Field/Hard Courts (Ashover)	APC
Potholes	DCC
Public Toilets	APC
Recycling (inc. blue box/bag scheme)	NEDDC
Refuse Collection	NEDDC
Reg. of Births, Deaths, Marriages	DCC
Register of Electors	NEDDC
Rights of Way (footpaths/bridleways)	DCC
Social Services	DCC
Street Cleaning	NEDDC

Street Lighting Repairs	DCC
Trading Standards	DCC
War Memorial	APC

NEDDC

North East Derbyshire District Council
2013 Mill Lane
Wingerworth
Chesterfield
S42 6NG
Tel: 01246 231111

DCC

Derbyshire County Council
County Hall
Matlock
DE4 3AG
Tel: 01629 533190

APC

Ashover Parish Council
The Sports Pavilion
Milken Lane
Ashover
Chesterfield
S45 0BA
Tel: 01246 863018

EMERGENCY SERVICES

Always dial 999 in case of an emergency

Derbyshire Police

101 (calls to report crime, anti-social behaviour, non-violent crime or general information)

Please note: You **MUST** continue to use 999 where a crime is in progress, for serious crime or where violence is being used.

Derbyshire Fire & Rescue

Administrative and fire safety enquiries:
01332 771221

Power and supplies

Electricity: Central Networks
(emergency) 0800 056 8090

Gas (emergency) 0800 111 999

Severn Trent Water (emergency)
0800 783 4444
or 0845 9881188 (flooding)

National Floodline
0845 988 1188

Hospitals/medical

NHS 111 is a service to make it easier for you to access local NHS healthcare services in England. You can call 111 when you need medical help fast but it's not a 999 emergency. NHS 111 is a fast and easy way to get the right help, whatever the time.

NHS 111 is available 24 hours a day, 365 days a year. Calls are free from landlines and mobile phones.

Royal Derby Hospital
01332 340131 - Main switchboard

Chesterfield Royal Hospital
01246 277271

Buxton Hospital
01298 214000

INFORMATION AND HELP

Derbyshire County Council – 01629 533190

North East Derbyshire District Council - 01246 231111

Lee Rowley MP - Parliamentary

Constituency

Office of Lee Rowley MP
Eckington Business Centre
Market Street
Eckington
Derbyshire
S21 4JH
Tel: 01246 439222
Email: lee.rowley.mp@parliament.uk

Social media

 Twitter: @lee4ned

WELCOME TO ASHOVER PARISH

This sheet outlines some of the facilities available in Ashover and a selection of websites and contact points. It is difficult to be comprehensive as so much goes on here, but it should give the newcomer a useful starting point. Currently, because of COVID-19, many events are temporarily suspended.

Local medical facilities

- o Ashover Community Medical Centre, Milken Lane, Ashover
- Doctors on duty (linked to Matlock) and prescriptions dispensed.
- See www.ashovermedicalcentre.co.uk Phone: 01246 590711
- o Whitworth Hospital, 330 Bakewell Road, Darley Dale, Matlock, DE4 2JD
- Open 08.00-20.00 daily, urgent treatment centre dealing with minor injuries
- See http://www.dchs.nhs.uk/find_services_by_location/id/45147
- Phone: 01629 580211

Local buses and taxis

- o No 63, Chesterfield/ Clay Cross/ Ashover / Matlock.
See www.bustimes.org/services/63-chesterfield-clay-cross-ashover-matlock
- o X17, Matlock to Sheffield via Kelstedge.
See www.stagecoachbus.com/routes/yorkshire/x17/matlock-sheffield/xuax017
- o Taxi - nearest in Clay Cross, also Matlock

Local shops

- o Anna's Tuck Shop, Church Street
- o D W Bown, Butchers Phone: 01246 590408
- o The Post Office: 01246 590527 and 'The Stamp' café 01246 591737

Parish Council

- o See www.ashover-pc.gov.uk
- o Parish Clerk parishclerk@ashover-pc.gov.uk phone 01246 863018
- o Council Members <https://www.ashover-pc.gov.uk/councillors.html>
- o See Ashover Parish Council notice board at entrance to cemetery on Moor Road
- o A notice board is provided outside the Public Conveniences on Moor Road for free public use

All Saints C of E Church

- o See <https://amberchurches.org>
- o See church porch for notices and Amber News (displayed in porch & available in PO)

Bassett Rooms (opposite The Crispin Inn)

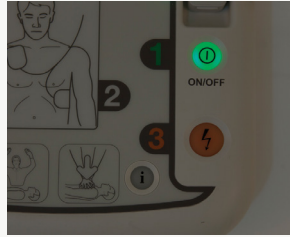
- o Contact bassettroom@gmail.com or phone 07515 280707
- o May be booked for private events
- o Activities held weekly or fortnightly:

- Acorns - church parent and toddler group
- Allsorts - church Sunday School
- Ashover Art Group
- Chair based exercise
- Church choir and youth choir
- Coffee Shop
- Handbells
- Lunch Club
- Pilates
- WEA (Classical Music lectures) in term time (see www.wea.org.uk)
- o Activities held monthly
- Art Appreciation
- Film Night
- Flower Club
- Foreign Film night
- **Parish Hall**
- o See www.ashoverparishhall.com (under 'News and Blog') or phone 01246 590005
- o See notice board outside Parish Hall for details
- o Activities include:
- Bowls
- Karate
- Pilates
- WEA (History lectures) in term time (see www.wea.org.uk)
- Yoga
- Children's clubs and activities
- Produce Clubs
- Art
- Young Farmers
- Women's Institute
- ...and more
- **Outside Sport facilities**
- o Cricket: See www.ashoverccc.play-cricket.com
- o Football: See www.ndyfl.co.uk/clubs.php
- o Tennis Club: See www.ashovertennisclub.btck.co.uk
- o Walking groups: Tuesday mornings & Tuesday evenings
- **Uppertown Social Club**
- o See www.uppertown.org
- o Uppertown Social Centre, Cullumbell Lane, Uppertown, S45 0JF



Lift the switch cover and set the adult/child selection switch to match the casualty. If the casualty is a child, there is no need to use different electrode pads.

If it is suspected the casualty is a child aged between 1 and 8 years old, the dual adult/child pads can be used with the switch selection set to the child mode.



Press the green on/off button. The voice prompts will start. Follow all the voice prompts.

This will commence with a beep, followed by:

1. "Call Emergency Medical Services now".
2. "Plug the pads connector in to the device" (pads are usually pre-connected so may not be heard)
3. "Adult mode" or "paediatric mode" (this is confirmation of switch selection)
4. "follow the voice prompts calmly"



Use the AED starter kit to prepare the casualty.

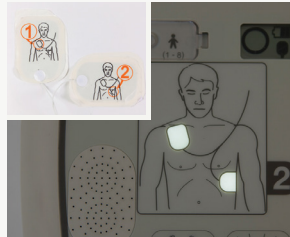
Voice prompts continue:

5. "Remove all clothing from chest and stomach. Rip clothing if necessary"



Prepare the device:

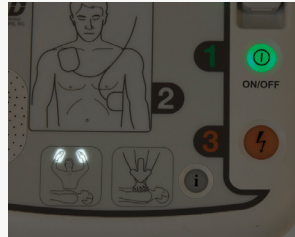
6. "Tear open the pads packaging"



Stick pads to casualty as illustrated on the pads. The visual indicator on the device will also light up to illustrate where to stick the pads.

Voice prompts continue:

7. "Look closely at the picture on each pad"
8. "Peel off the pad labelled '1' and stick to the bare skin of the patient, exactly as shown in the picture"
9. "Peel off the pad labelled '2' and stick to the bare skin of the patient, exactly as shown in the picture"
10. "Press pads firmly to the skin of the patient"



The device will light up to ensure no-one is touching the casualty. The iPad SP1 will analyse the casualty's heart rhythm and assess if a shock is necessary.

Voice prompts continue:

11. "Do not touch the patient"
12. "Analysing heart rhythm"

20's Plenty



Where people are

20's Plenty for Us campaigns for 20mph as the default speed limit for urban and village streets where people live, work, shop, play and learn.

www.20splenty.org



Ashover
Community First

© Ashover Parish Council
May 2021
