



Ashover
Community First



LOCAL COUNCIL
AWARD SCHEME
QUALITY

ISSUE no.1
2022/2023

Ashover Parish Council Annual Report 2021/2022



“PLATINUM JUBILEE”

EVENT GUIDE WITH THIS ISSUE

Website: www.ashover-pc.gov.uk



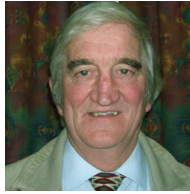
CONTENTS

	Parish Hall	16
	Parochial Church Council	17
CHAIRMAN'S REPORT	1	18
HM Queen's Platinum Jubilee	3	18
Allotments	5	18
Artefacts/History/Memorabilia	5	19
Community Medical Centre	5	19
Patient Participation Group	5	19
Ashover Light Railway Society	6	19
Ashover Show 2022	6	19
Brass Band	6	20
Cemetery	7	21
Christmas Lights '21	8	21
Climate Change	8	21
Common Land	9	21
Community Car Scheme	9	22
Communication	9	22
County/District Liaison	9	23
Community Workshop/Garden	9	23
Cricket Club	9	25
Dark Skies	10	25
Defibrillators	10	25
District Councillor W Armitage	11	26
Donations/Grants	11	29
Employees	12	31
Footpaths & Bridleways	12	
Grit Bins	13	
Grounds Maintenance	13	
Hard Courts	13	
Home Produce Club	13	
Litter Problem	13	
Local Council Award Scheme	14	
Neighbourhood Plan	15	
NEDDC Local Plan 2014-2034	15	
Newsletters	15	
Oil Buying Scheme	15	
Pantomime '22	16	
Parish Appearance/Maintenance	16	
Parish Councils and Meetings	16	
Parish Council Surgeries	16	
	Planning	18
	Play Area	18
	Potholes, Pavements & other	18
	Public Conveniences	19
	PSPO	19
	Rights of Way	19
	River Amber	19
	Rykneld Homes	19
	Scams & Cyber Security	20
	Speed Awareness	21
	Street Furniture/Property	21
	Subscriptions	21
	Tennis Coaching Report	21
	Tennis Club	22
	Tree Warden	22
	Trusted Trader Scheme	23
	Uppertown Social Centre	23
	War Memorial	25
	Waste Recycling: DCC	25
	Website – www.ashover-pc.gov.uk	25
	Financial Report	26
	COUNCILLORS	29
	INFORMATION AND HELP	31

CHAIRMAN'S REPORT

Dear Parishioners,

As I prepare this annual statement in March 2022, I am reflecting on the unprecedented times in which we live.



Covid has focused everyone's minds over this last year, along with a steep rise in the cost of living, and we now have the uncertainty of the outcome of the situation in Ukraine. Unfortunately all the current issues are beyond our control.

Looking back over 2021, the Parish Council attended meetings using "Zoom" which proved to be extremely useful during the period of no face to face meetings. However, we are now back to the normal meetings, held every third Tuesday of the month; the one exception was the December 2021 meeting which was cancelled due to the 'Omicron' variant.

Areas of concern include consultation with Derbyshire County Council Highways to try and establish a (30 mph) speed limit in Alton and this is ongoing.

The A632 through Kelstedge and beyond has, once again, experienced a number of accidents and the Parish Council has pressed for more safety measures on this section of road. There appears to be a reluctance to reduce the speed limit to 30mph through Kelstedge and the 40 mph limit, to include the Birkin Lane crossroads, continues.

I would like to thank the Climate Change Group who are discussing several ideas in an effort to reduce our carbon footprint. The permanent fixing of a cycle rack in the car park, to encourage greater use of cycling, has reached a conclusion helped by a grant from the Ashover Community Medical Centre Ltd.

Thanks to all the volunteers who have been involved in litter picking, the tree group, footpaths and bridleways group and the Duke of Edinburgh student.

CONTINUED ON THE NEXT PAGE...

Their work is a valuable contribution in helping with the up-keep of our parish.

A series of meetings have taken place with the Ashover Parish Hall CIO Trustees with regards to the Sports Pavilion and the Car Park management. This will continue into the new council year i.e. from May 2022.

I am pleased to say that we, as a Council, have achieved 'Quality' re – accreditation under the National Local Council Award Scheme; thanks go to the Clerk who has made this possible, particularly at a difficult time due to the Covid restrictions.

Other good news includes the return of the Christmas Event in December 2021, which was well attended. A programme of celebration is being prepared for 'The Queens Platinum Jubilee' in June 2022. The event will require volunteer Marshals in order to meet legal requirements. Any willing helpers please contact the Parish Clerk as soon as possible for details. Without volunteer Marshals, the event will not run.

I would like to take this opportunity to extend a warm welcome to our new Priest in Charge of All Saints Church Ashover, The Revd Dr Peter Bold and his wife Candy, and thank all the people involved in 'filling the gap' after the retirement of Revd Ralph Lawrence.

In conclusion, thanks to Council Members who continue to volunteer their time and please note that the next Parish Council Elections will take place in May 2023.

Councillor Ed Willmot
Chairman, Ashover Parish Council
2021/2022



To commemorate this wonderful occasion, the Parish Council, along with the Jubilee Working Party are organising a 3-day event, starting Thursday 2nd to Sunday 5th of June.

From a fireworks and music evening at the Parish Hall on Thursday 2nd June, a fabulous family fun day on Saturday 4th, with a jubilee parade, fun run and much more in the centre of the parish, concluding with a thanksgiving service on Sunday 5th June.

For this parish event to go ahead, we really need the help & support from our lovely community.

Any time you can give over those days, no matter how short, will be greatly appreciated.

Without the wonderful team of volunteers this event wouldn't be able to go ahead and for this we thank you very much.

We are looking for volunteer marshals.

Can you spare anytime to lend a hand, to keep our children and community safe?



Please contact the Ashover Parish Clerk

Email: parishclerk@ashover-pc.gov.uk

Tel: 01246 863018

THE QUEEN'S PLATINUM JUBILEE CELEBRATIONS 2022

Sadly, due to coronavirus, it is 2019 since we had our annual May Day event. Plans were going to go forward for May Day 2022, however, as it is HER MAJESTY'S PLATINUM JUBILEE CELEBRATIONS in June 2022, it has been agreed to incorporate May Day into the Jubilee, these celebrations will be held on Church Street with many Stalls and Entertainers, there will of course be a road closure in place from 8am to 5pm, making the environment safe for everyone.

There will be a Parade led by Ashover Brass Band and the crowning of our Jubilee Queen & King, who will have their Jubilee Attendants with them.

It is planned to have a non-stop day of fun, enjoyment and togetherness and particularly appreciating a very unique event that will always be in our minds, as we think of our VERY SPECIAL QUEEN and all she has done for EVERY ONE OF US.

Ashover Parish Council is looking forward to the celebrations between 2nd and 5th June 2022 and the programme of events will be:-



THURSDAY 2 JUNE 2022 - FAMILY NIGHT & FIREWORKS

'Kick Off' ticket only Family Night from 7.30pm hosted by Ashover Parish Hall, with an evening of quizzing, colouring competitions, a Singer and DJ.

At around 10pm that evening, the Parish Council has organised a Fireworks display on the playing field.

SATURDAY 4 JUNE 2022 - CELEBRATION DAY ON CHURCH STREET

To be held on Church Street from 9.30am to 4.00pm with Stalls, Entertainment, Crowning of Jubilee Queen & King with Attendants, Treasure Hunt and much more - a full day of fun.

For full details, see the Celebration Day programme circulated with this Annual Report or go online to www.ashover-pc.gov.uk

SUNDAY 5 JUNE 2022 - THANKSGIVING SERVICE 10.45 AM

To be held in the open air on Milken Lane Playing field if weather allows or otherwise in All Saints Church.

Hope to see you there!!

Ashover Parish Council

ALLOTMENTS

The allotments on Marsh Green are owned by the Parish Council and are presently rented by six residents.

ARTEFACTS/HISTORY/MEMORABILIA EXHIBITION

Your Parish Council organised an Artefacts/History/Memorabilia Exhibition in the Fabric Room of Ashover Parish Hall on Saturday 23 October 2021, entry was free and a resident kindly served tea, coffee and biscuits provided by your Parish Council. A total of 275 people came through the doors to see the exhibition which included exhibits from:-

Ashover Parish Council

Ashover Light Railway Society

Ashover Brass Band

Ashover History Society

Ashover Chronicles

Nottingham University/ Derbyshire Record

Society/Victoria County History

Stonewalling, History and Geology of the Parish

Victorian Photographs



The event proved to be an outstanding success with very positive feedback being received.

ASHOVER COMMUNITY MEDICAL CENTRE LTD

Ashover Community Medical Centre is owned by a community based trust (which is also a company limited by guarantee) and is leased to the medical practice. Money was raised to construct the medical centre through fundraising, contributions from local businesses and securing external grants. The advantage of the Trust owning the medical centre is that the funds that are generated are available to be distributed for the benefit of

the local community, in accordance with the Trust's charitable objectives.

Once again the Trustees would like to express their sincere thanks to the doctors and all of the staff at the surgery for their hard work during a further year of extreme pressure and challenges. The Trust provided all of the staff at the surgery with a gift as a token of appreciation for their hard work and dedication during the pandemic.

The Trustees are pleased to have been able to support local activities and causes through the provision of financial assistance. Grants have been provided to Ashover Cricket Club for equipment, Ashover Rangers to help with a team-building day, Ashover Brownies and Guides to subsidise a circus workshop, Ashover Football Club for use of the pitch and changing rooms, Ashover Lunch Club, Ashover Parish Council for the switching on of the Christmas lights and a cycle rack in the public car park and Ashover Dynamites Under 8s Football Team for equipment.

Owing to the restrictions that have been in place a number of grants have been carried forward from previous years and the Trustees are glad to be supporting Ashover Seniors, the Woolley Moor Show and the pantomime during the forthcoming year.

Now that community activities are able to resume the Trustees would like to encourage any local groups who provide projects or activities in the Ashover area to apply for a grant. Please send any enquiries to the Trust's email address at enquiries1acmcl@outlook.com

The Trustees are Ed Willmott, Chair, Andrew King, Treasurer, Jacqueline Collins, Secretary, Lucy Taylor and Paul Winter.

ASHOVER PATIENTS PARTICIPATION GROUP

The Pandemic led to many changes in the working practices of the Medical Centre and many patients found the changes difficult to accept; bring back Dr Jones was a common cry! The Centre is now returning to a new normal.

To help all patients understand the new normal the Practice, in consultation with the PPG, has drawn up a Patient's Charter; this sets out what patients can now reasonably expect from those working in the Medical Centre and, in return, what those who work in the Centre can reasonably expect from its patients. The Charter is available to download on the Practice Website: www.ashovermedicalcentre.co.uk

All agree the existence of the Centre in the village is a huge benefit, but help is needed in two important respects to make more secure its future.

First, is to ask that all eligible patients, young and old, use the Dispensary. The Dispensary generates 75% of the Medical Centre's income; a prescription taken to a Pharmacy denies income to the Practice.

Second, is for help in helping to retain a strong, well supported and motivated team of Secretaries, Dispensers and Receptionists. At present the Practice has such a staff but their motivation, patience, morale and cohesion is, from time to time, seriously undermined by the abuse received from some patients. Please be considerate to the staff who work within a framework determined by the Practice and treat them with the same courtesy, kindness and respect that you would like to receive yourself.

If we can all help in these two respects and despite the economic environment in which rural General Practices have to work, we can look forward to the continued presence of the Medical Centre in the village.

ASHOVER LIGHT RAILWAY SOCIETY A Registered Charity

In common with many other groups and organisations the ALRS was adversely affected by the COVID pandemic. Whereas in a 'normal' year we would have had a presence at local shows and events 2021 saw wholesale cancellations across the board.

We did, however, display at the Ashover Parish History event in October which gave us the opportunity to reconnect with the

village and generate interest in the railway and its history. There are still residents who fondly remember the Peggy Line and its link into Ashover's history.

Meanwhile the Society is pursuing its aim to recreate the atmosphere of Ashover Butts at our present home at Peak Rail's site at Rowsley. Track has been laid, locomotives restored and run (although it must be admitted that this does not yet include a Baldwin steam locomotive.) all in spite of COVID induced restrictions. There are plans to operate a passenger service, maybe in 2022.

The society has acquired a number of artefacts relating to the railway, but we are always on the lookout for any more. Are there any unpublished photographs out there that feature the railway, even as a background?

If you would like to educate yourselves on the railway, its route and its history may I refer you to our website www.alrs.org.uk

David Willmott

PUBLICITY OFFICER

ASHOVER SHOW 2022 – 10 AUGUST

Ashover Show returns, for up to date information, please visit www.ashovershow.co.uk

BRASS BAND

The members of Ashover Brass Band have emerged from the pandemic with no loss of love of playing and performing for our local audiences. During the lockdowns, we kept in contact with a WhatsApp chat, virtual rehearsals, playing in small groups outdoors and even taking part in two online competitions. We performed a specially composed piece of music by our Musical Director, Richard Windle, which was inspired by Ashover's history and scenery, until we were able to meet and play again as a band. We were able to play together from the late Spring of 2021 in time for performances at a wedding in Ashover Church, at the Rail Ale festival at Barrow Hill Round House, at

Remembrance Sunday and of course at our popular Christmas concert and various festive gatherings in the run up to Christmas.

We would like to wholeheartedly thank all for their support this year (particularly in the torrential rain at Littlemoor!) and donations, which went a long way towards covering our expenses in a time where our finances were hit by a lack of bookings due to the pandemic. Thanks also go to our trustees and committee members who have continued to support the band and help keep it running during this difficult time.

In the autumn, we were also pleased to participate in the History and Memorabilia Exhibition in the Parish Hall where we were able to display various vintage instruments, including the large marching drum and old music and photographs. This year, to celebrate 50 years since the band reformed, I am making good on a promise to write up the band's history- watch this space...

The band are now rehearsing a delightful Jubilee-year tribute programme for 2022 and we can't wait to play for you all at our various engagements, including the Jubilee weekend celebrations on 4/5th June and concerts in Clay Cross on 11th June and Ashover on 2nd July and of course the at the return of the Ashover Show. To see all our engagements or to enquire about booking with us please see our website at www.ashoverband.com or why not follow our pages on Facebook (to see our virtual recordings), Twitter or Instagram?

John Surgy
CHAIRMAN

CEMETERY

The Ashover Parish Cemetery is a place used by many to remember their loved ones. It is a place of peace and tranquillity and the Burial Board is dedicated to maintaining and preserving the amenity of the area in a manner that is sympathetic to the surroundings. The next available section in the Cemetery is now released for burials. The regulations have been amended to maximise the efficiency of space used, by only allowing consecu-

tive burials. No pre-reservation of space is allowed in the new section. New footpaths to set out this section have been completed. To preserve the tranquillity of the new area we have closed the unauthorised access through the hedge onto the public footpath with fencing.

A Tree Survey was undertaken in January 2022 in line with our policy for tree inspection. We continuously monitor our tree stocks for safety. As a result of the tree survey we identified a Hornbeam with identified basal decay and a recommendation for it to be removed. Instructions have been issued for the tree to be felled.

The existing grounds maintenance contract is due to expire at the end of March 2022. The Parish Council put the contract out to tender to three interested parties and bids were received and evaluated. A new contract has been issued to Shed Ground Maintenance Ltd who are locally based. This contract covers all aspects of the cemetery maintenance including grass cutting, shrub beds, hedges, weed control and basic tree inspection. The contract has been awarded for three years subject to annual review.

Under a separate contract we continue to weed kill the paths and borders to maintain their functionality.

The Lengthsman has now retired from Cemetery duties, and separate short term contracts will be placed to continue to maintain the amenity generally.

Burial records for Ashover Cemetery are digitised and maintained by the Burial Clerk. Original paper records have been archived at the County Archives Office in Matlock.

Three large memorials have been repaired and reinstated at a cost of £1,600, as part of an ongoing programme to preserve the amenity of Ashover Cemetery and several smaller memorials have been stabilised for safety. This program will continue in the coming year.

Fees and Charges have been maintained at current levels and no increase has been imposed. A 'Fees and Charges' list and other

documentation for the cemetery may be found on the Parish Council's website at: www.ashover-pc.gov.uk .

Cllr Chris Miller

CHAIRMAN OF THE BURIAL BOARD

CHRISTMAS LIGHTS 2021



In 2021 we had the Ashover Christmas lights event once again. The Christmas tree lights were switched on by the Parish Lengthsman, John Bown, who was ably assisted by local children. Our

very own Town Crier, Merrick Bull was the Master of Ceremonies who, as ever, delivered a virtuoso performance. So many thanks go to Merrick. A heartfelt thank you also goes to Father Christmas, his elves and the helpers who created a wonderful Santa's Grotto. Thanks also go to Ashover Brass Band and the Church Choir, who all helped to give the 'Christmassy' feeling to all who came and dutifully sang. The excited children queued up to visit our own special Father Christmas in his enchanting atmospheric grotto in the Basset Rooms. Ashover Parish Christmas lights switch-on was another success, so a huge thank you once again goes to Ashover Parish Council for continuing to support this event and a special "thank you" goes to Ashover Community Medical Centre Ltd which made a generous donation towards costs, and the marshals who helped to keep us all safe.



Cllrs Lucy Hunter-Bott and Helen Boffy
CHRISTMAS EVENT VOLUNTEER GROUP

CLIMATE CHANGE

In July 2020, Ashover Parish Council made a declaration to 'acknowledge that climate change is one of the largest challenges facing the world and also recognises that it is a key influencing body that can act on this'. The declaration continued 'Therefore it is essential that this Parish Council helps to proactively facilitate the protection of our local environment, heritage and natural beauty. This needs to be delivered in a way that promotes sustainability, healthy living and also prosperity within the parish. Through this mutually sustainable approach to living in the parish, we can help ensure that it can continue to be enjoyed by future generations indefinitely'.

During the year the Parish Council, on the recommendations of the Climate Change Group, approved the siting of a bicycle rack in the main car park, adjacent to the entrance with appropriate signing. A grant in the sum of £500.00 has been awarded by the Ashover Community Medical Centre Ltd towards this project.

The Group has been working towards linking habitats of value to wildlife in the parish, through the creation of wildlife corridors. We have established outside services with District Council for the removal of litter collected by volunteers. Litter picks continue on an ad hoc basis and litter picking equipment is available to borrow through the Parish Clerk.

Work is ongoing to identify and subsequently plant wildflower areas around the Parish and to investigate the feasibility of installing living roofs on some bus shelters.

The Parish Book Swap sited in the Parish Council's Information Point on Moor Road, continues to go from strength to strength.

Cllr Helen Boffy
CLIMATE CHANGE WORKING GROUP

COMMON LAND

Your Parish Council continues to monitor common land, carrying out maintenance where necessary. Parish Council approval has been given for some trees on common land to be managed by the Ashover Tree Group.

COMMUNITY CAR SCHEME

The scheme covering Chesterfield, Ashover and Amber Valley is supported by the NHS, Derby City and Derbyshire County Council, CT4TC Community Transport for Town and Country. For more information telephone the booking line on 01773 746652.

COMMUNICATION

If you wish to report on events within the parish to the local press, this can be done via the "Grass Roots" section of "The Derbyshire Times" by e-mailing: grassroots@derbyshiretimes.co.uk.

COUNTY/DISTRICT COUNCIL LIAISON MEETINGS

County/District/Parish Liaison meetings/events are held during the year, with presentations and liaison on various issues. Your Parish Council is represented at these meetings.

COMMUNITY WORKSHOP/GARDEN

As a direct result of the search for a location for the Community Workshop (launched in late summer 2021 and mentioned in February's newsletter) a garden project has been established with High Ashes Rural Project (HARP) at High Ashes Farm, north of the Parish. The aim of the group is to help more isolated people in Ashover and the surrounding areas, giving them a sense of community. While investigations into setting up a workshop proper continue, the group has been in contact with the various local 'Men in Sheds' and national organisations. In the meantime, the establishment of a group of volunteers working on various garden-based projects

up at HARP has provided the group with an immediate outlet for its energies! If you are interested in joining in, do feel free to get in touch with Margaret Dewhurst at mad13@mad13.co.uk or phone her on 01246 590969 for more details on what we're up to and when.

CRICKET CLUB

ASHOVER BARBARIANS CC

Because Covid restrictions, to the relief of everyone were eased early last year the cricket season started pretty much on time. This enabled us to run 4 senior teams, 3 on a Saturday and 1 Sunday team and its safe to say our teams enjoyed a mixed season. Our Saturday 1xl and 3xl both slightly disappointingly finished mid table but our 2xl under Captain Jim Carley ended the season second in their section and celebrated promotion. Congratulations to Jim and his players on a terrific season.

Our Sunday team found themselves in a section that was far too strong for what was mainly a very young team but great credit to them for sticking at it despite being tailed off at the bottom of the league. This coming season we should fare much better in a lower section where our young team will have a better opportunity to compete.

Our Junior season was a huge success as we ran 'All Stars' for children age 5/6/7 and our Friday night 'Kwik Cricket' for boys and girls aged 8/9/10 and 11. We also fielded 'Hardball' junior teams at U11, U13 and U15. In all we had an incredible 150plus local youngster involved in our club and I would like to thank all their parents for their terrific support during the summer.

As a club we are lucky to have a hard core of volunteers that work very hard to provide cricket for all ages in the local community and I would like to sincerely thank them all for their hard work and commitment. However we are always on the lookout for new volunteers so should anyone in the parish or surrounding areas wish to become involved in our club in any capacity then we

would be delighted for them to get in touch. Work is already underway preparing for the 2022 season where we hope that we can all enjoy the sound of leather on wood and that peace and normality will be totally restored.

David Cooke

CHAIRMAN OF ASHOVER BARBARIANS CC

DARK SKIES

Did you know that Ashover Parish is a 'Dark Skies' area? This means that any plans for development in the parish are considered for any potential impact on our local beautiful dark skies. Darkness at night is one of the key characteristics of rural areas and there is some concern that it is being diminished by light pollution.

The Council for the Preservation of Rural England (CPRE) has produced detailed maps, showing how much light is spilling up into Britain's night sky. Ashover Parish includes areas of relatively dark skies which is an inherent part of its rural character, its tranquillity and important for nature conservation.

Night-time light pollution is a particular concern for wildlife and in particular, some light sensitive species. In Ashover, this includes the three species of bat and glow worms that have been recorded at a number of locations.

Outdoor lighting can give rise to a number of different lighting pollution types. They are: -

- *Sky glow* – the orange glow we see around urban areas caused by a scattering of artificial lighting by dust particles and water droplets in the sky;
- *Glare* – the uncomfortable brightness of a light source when viewed against a darker background; and
- *Light Nuisance* – light spilling beyond the boundary of the property on which a light is located.

The Ashover Parish Neighbourhood Plan seeks to ensure that the existing dark skies outside of the main settlements are protected and that new developments do not increase light spillage, which benefits our wildlife and

helps to preserve the rural character of our parish.

We would appreciate it if local residents could be mindful of the amount of exterior lighting used around their properties. Where it is deemed necessary to have outdoor lighting residents should consider fitting motion sensors and/or lighting that isn't overly bright. Research has shown that motion-activated lighting is more effective as a deterrent than lighting that is left on constantly, and of course saves money on electricity bills as well as being less environmentally damaging.

DEFIBRILLATORS

Ashover Parish Council has installed six defibrillators at the following locations:-

- *Outside Uppertown Social Centre
- *Outside the medical centre in Ashover
- *In the red kiosk at Alton
- *In the red kiosk at Littlemoor
- *On the side of The Miners Arms, Milltown
- *On the side of The Kelstedge Inn,

Kelstedge
Thanks go to Ashover Community Medical Centre Ltd. that has worked in partnership with Ashover Parish Council and supported the cost of the units via grant aid.

If you need to use a defibrillator remember -

In an emergency, Dial 999 and you will be given the code to the cabinet and further instructions.

If you would like to know more about how the defibrillators work, visit the parish council website and put 'defibrillator in use quick reference guide' into the search box at the top right-hand corner of the homepage or paste the following link into your browser:-
<http://www.ashover-pc.gov.uk/uploads/ipad-sp1-in-use-quick-reference-guide-a4-for-web.pdf>

The above guide is also shown at the back of this booklet.

DISTRICT COUNCILLOR W ARMITAGE (NEDDC)



When I wrote last year's report I was hoping to say that the Pandemic was over but as we all know it is

still around, let's hope it will be gone next year. At North East Derbyshire District Council we have adopted a policy of agile working in an attempt to stop the spread of covid 19.

The new Local Plan for North East Derbyshire has now been approved and accepted and we have a sound footing on which to make planning decisions, for further information visit

<https://www.ne-derbyshire.gov.uk/planning-and-local-plan/planning-policy-and-local-plan>

We have taken a hard line on fly tipping and littering, the fines have been doubled and where a vehicle is concerned it can be confiscated and crushed, some of you will have seen the van with large lettering on it saying Environmental Health on it; the driver is watching for people who deliberately drop litter, if they are seen they will receive an on the spot fine of £80. There are a number of fly tipping hot spots in the district and these will have concealed cctv placed in and around the area.

During the year we have saved seventy five families from being made homeless by using the Government's housing support fund. We are one of the few councils that has been selected for County deals, this has been set up for increased funding, how much has yet to be approved.

Last year I was able to secure more funding for the Citizens Advice Bureau and once Sharley Park is refurbished it, will get a permanent office there; many people will need help and support considering the rise in heating costs and inflation in general. I have been working with the Police and

Crime Panel; this is a committee which oversees the work of the Police and also the Police and Crime Commissioner. We were given a presentation by 'Crimestoppers', whereby people can contact them, totally anonymously and give information to the police regarding crime. This has proved to be very successful and has resulted in many crimes being solved.

At the time of writing, work has started on the refurbishment of the Dovecotes garages, this has been a long running process but it has actually happened. Planning Permission has also been sought for parking spaces for Dovecotes and also at Littlemoor and I hope that, if approved, it will alleviate the parking situation at both of these locations; this has also been a long running process.

As far as planning is concerned, we have appointed two new enforcement officers who are responding quickly to the many issues in the district. We have also appointed a new arboriculturist and heritage officer, this was greatly needed, because when we have planning matters regarding trees we had to get outside advice and this proved very expensive, the total investment of these three officers is over £200K.

We still have the ongoing issues with potholes and many of these have been caused by the last three storms, so if you are aware of a pothole please report it online at <https://www.derbyshire.gov.uk/transport-roads/roads-traffic/road-maintenance/road-maintenance.aspx>

I was appointed President of the Derbyshire Association of Local Councils during the past year.

William Armitage

NEDDC COUNCILLOR FOR ASHOVER WARD

DONATIONS/GRANTS

During 2021/22 your Parish Council donated £542.20 as follows:-

- NEDDC Chair Appeal for Ashgate Hospicecare £100.00
- 1st Ashover Brownies for dog poo bags - £10.00

- Ashover Lunch Club Christmas activity - £25.00
- Ashover Parochial Church Council - £25.00
- Ashover Acorns Christmas activity - £25.00
- Ashover Senior Citizens Christmas activity - £50.00
- 3 year Church Clock Maintenance - £307.20

EMPLOYEES

Your Parish Council employs two people: Sara Atkinson - Parish Clerk/Responsible Financial Officer/Burial Clerk (23 hours per week) and John Bown – Public Toilet Attendant and Health & Safety Monitor (5 hours per week).

FOOTPATH AND BRIDLEWAY GROUP

The paths and bridleways have remained busy throughout the year and more and more people seem to have both re-discovered the areas around where they live or come new to the Parish.

Despite the ravages of both wind and water, the network of rights of way is in generally good shape. Local landowners have removed large, fallen trees from across several ways and the Rights of Way officer has also helped to facilitate the clearing of several blockages.

The huge contribution of Tom Cartwright, who holds the Parish Council contract for major, annual clearance, needs especial mention.

Volunteers have continued to work on several paths and are covered by insurance by the Parish Council. For instance, the stone paved path to Overton Hall has been scraped clear again, as have the steps from Appletree Knoll. Repairs have been done to gates and some of the wooden benches around the area have been re-varnished by volunteers too.

The same volunteers have also worked on the three County Council sites: Highoredish, The Fabric and Eddlestowe Lot. The work is linked with the local conservation plan to protect the diversity of habitats that are rare outside The Peak. Views down to Ashover from The Fabric have also been improved.

The County Council has worked on Coffin/Salter Lane (down from The Poets) to repair drainage and the eroded surface. We will be able to judge how well it works when the next heavy rain comes!

Many people have helped to remove litter from our parish off- road areas. As well as locals, those who love the area and for whom it is special, are from surrounding parishes. The younger people of Ashover Parish deserve a special mention, including the Guides and Brownies and teenagers and younger children, supported by their families.

Over 20 finger posts, found at the road side to indicate the exact line of a path, are on the County Council list for replacement. Ashover will have to wait its turn, as the list is many hundreds long. It has been requested that priority be given to signpost Back Lane and Greenend, Overton, confirmed as bridleways in July 2019. This would then give clear indication to off-road motorcyclists of its legal status as sporadic misuse is still evident. Peak and Northern Footpath Society survey and mend their special signs frequently. There is a new one coming somewhere, soon....

We are lucky that so many landowners and farmers protect the rights of way across their land and we try to co-operate in helping them to make the ways clear. With over 160 paths covering around 50 miles, we have very few obstructions in the Parish and those that do come to light are usually rectified quite quickly, with the help of The Ramblers. The Rights of Way Officer may become involved, as a last resort, as rights of way are treated in law as public highways.

- Keep on walking the paths and bridleways!
- Footpaths are for walkers and not cyclists.
- Bridleways are for walkers, horse riders and cyclists and in that order of priority but in practice we should all look out for each other.

Richard Felton

ASHOVER FOOTPATH & BRIDLEWAY GROUP/
BRITISH HORSE SOCIETY VOLUNTEER ACCESS &
BRIDLEWAY OFFICER FOR NORTH DERBYSHIRE

GRIT BINS

Your Parish Council owns and fills a total of 37 grit bins sited around the parish and undertakes winter maintenance of the Milken Lane Car Park.

The salt is supplied for use on the highway adjacent the bin and if you witness large amounts being taken for personal use, please contact the Police.

GROUNDS MAINTENANCE

The maintenance contract with North East Derbyshire District Council continues and includes maintenance of the playing field, borders surrounding the car park, play area and tennis courts, statutory monthly and annual safety inspections. Pitch bookings administration continues to be undertaken by NEDDC. Your Parish Council approved a further 5 year contract with NEDDC commencing in April 2021.

HARD COURTS

The hard courts, adjacent Milken Lane Car Park, have been cleaned, sealed and repainted. They are available for booking at certain times (minimum 10 bookings) by a club or organisation affiliated to a league at a cost of £5.00 per hour and Floodlight cards are available at £3.00 per card/hour. Clubs and Organisations may book at the following times:-

- Tuesday - 4pm onwards
- Wednesday - 6pm onwards
- Friday - 6pm onwards
- Sat/Sun - 1pm to 6pm

(The above times change over the winter period, when Club/Organisation bookings may commence at 4pm each evening.)

At all other times and when the courts are not booked, municipal tennis may be played for free.



HOME PRODUCE CLUB

The Ashover Home Produce Club was formed in 1941 during the Dig for Victory Campaign.

It is thought that the Produce Club is now the only Produce Club in existence.

The Produce Club are now looking for new members, more importantly the Club is looking for a new Secretary, due to the retirement of the existing Secretary, and to ensure the continuation of the Ashover Produce Club.

The Club meets from March through September.

The Produce Club hosts its Produce Show the first Saturday in September.

The position of Secretary will not require a lot of time but obviously some admin work, organising and note taking will be necessary. The Secretary will not be required to organise the Produce Show.

LITTER PROBLEM ON COUNTRY ROADS

Littering is a nationwide problem and 20 years of poster campaigns, TV adverts and voluntary agreements have had little effect on littering behaviour. Some of the problems caused by littering are:

- Damage to vehicle tyres.
- Harm to wildlife, farm animals and pets – the RSPCA receive on average 7,000 calls a year in relation to animals injured by litter.
- Drain blockages.
- Rat infestation.

In towns and cities the council is obliged to clear problem areas of litter but in rural areas councils don't have the resources to clear miles of country roads – research has shown that one mile of road can contain 147 items of litter. Where communities have taken the initiative and formed groups of volunteer litter pickers 'adopting' a section of road each to keep clear, this has had a big impact on reducing littering and gives the volunteers a real sense of purpose. Please take a look at the CPRE and Keep Britain Tidy websites.

KEEP ASHOVER PARISH TIDY!



LITTERPICKERS ARE AVAILABLE FOR VOLUNTEERS TO BORROW TO HELP KEEP THE PARISH TIDY!!

These have been purchased by Ashover Parish Council for use at your own risk.

Litterpickers are available by arrangement on weekdays by telephoning 07752 922593. Please dispose of all rubbish collected responsibly and if you need help, please contact the Parish Clerk.

LOCAL COUNCIL AWARD SCHEME

Ashover Parish Council has received re-accreditation at 'Quality' level, a prestigious award, as part of the Local Council Award Scheme. This achievement recognises that the council achieves good practice in governance, community engagement and council improvement. Moreover, Ashover Parish Council goes above and beyond their legal obligations, leading their communities and continuously seeking opportunities to improve and develop even further.

The Award Scheme report highlighted the council's particular areas of strength, stating:- "...you are leading your community and continuously seeking opportunities to improve and develop even further. Therefore the council is to be congratulated immensely."

The Local Council Award Scheme is a peer assessed programme that has been designed to both provide the tools and encouragement to those councils at the beginning of their improvement journeys, as well as

promoting and recognising councils that are at the cutting edge of the sector. It is through the sector working together to share best practice, drive up standards and supporting those who are committed to improving their offer to their communities that individual councils and the sector as a whole will reach its full potential.

Ashover Parish Council's own Chairman, Councillor Ed Willmot, was quoted as being delighted and said:-

"This is recognition of the time and devotion given by the clerk and councillors in the way we conduct our business."



Derbyshire Association of Local Councils' Chief Officer, Wendy Amis, was delighted to present Ashover Parish Council Clerk, Sara Atkinson, with the LCAS Quality

mark at their meeting in February 2022. To quote from the LCAS application process: 'Quality-mark councils go above and beyond their legal obligations, leading their communities and continuously seeking opportunities to improve and develop even further.' Wendy added: "The council should be very proud of itself for achieving this award – it's a true reflection of the hard work and dedication shown by its Clerk and Councillors, and is a great way of showing that the council's working practices make a positive difference to the community of Ashover."

In terms of the future, the council is now reviewing ways in which it can keep on improving its offer to the local community and welcomes input from local people and partners on this. Ashover Parish Council and other local councils like it, are at the front line of the government's localism agenda and are doing as much as they can to deliver services whilst being efficient and cost effective.

NEIGHBOURHOOD PLANS

Your Neighbourhood Plan has now been in force for over 4 years and is regularly referred to by Planners, Developers, Parish Councillors and the Planning Inspectorate in relation to Planning Applications. It has been used to both help gain approval and also as an aid when there are objections to an application.

There are currently some changes which need to be made to the Neighbourhood Plan. The North East Derbyshire District Council (NEDDC) Local Plan has been approved and brought into force so we are now in a position to submit these changes to NEDDC. These changes will be published on the Parish Council website, so all the Parishioners will get a chance to view and comment on the changes.

In addition to Planning, the document also covers other aspects of life in the Parish including, amongst other things, Jobs and Economy, Community Facilities and Shops, Design and Built Heritage, Environment and getting around the Parish.

Ashover Parish Neighbourhood Plan may be found at:-

<https://www.ne-derbyshire.gov.uk/documents/neighbourhood-planning/ashover/ashover-neighbourhood-plan-made-version-feb-2018>

Cllr Richard Fidler

NEDDC LOCAL PLAN 2014-2034

The North East Derbyshire District Council's Local Plan 2014-2034 has now been adopted. For further information, please visit the NEDDC website at www.ne-derbyshire.gov.uk

NEWSLETTERS

Your Parish Council issues four Newsletters per year, the first of which is the Annual Report of the Parish Council which is circulated to every household in the parish and published on the website. The other three Newsletters may be found on the website at www.ashover-pc.gov.uk. If you

would like to be included on the mailing list for the newsletter, please let the Parish Clerk know.

You'll find that Ashover Parish Council's website (www.ashover-pc.gov.uk) is pretty much an information hub for what's going on around the parish. Apart from formal content such as information about the Council, its meetings and Minutes, Planning (including the Neighbourhood Plan). It's through the News section that you'll see bulletins from Derbyshire County Council, North East Derbyshire District Council, Derbyshire Police etc.

If you have any suggestions on ways in which we could improve what we offer we'll of course be pleased to receive them.

OIL BUYING SCHEME

Rural Action Derbyshire (RAD) is a charity set up in 1924 to support rural communities in Derbyshire. One of their current projects is running a community bulk oil buying scheme.

Oil prices are extremely low at the moment which is good news for oil users. RAD can make cheap oil even cheaper through this bulk buying scheme.

The scheme is open to anyone using Kerosene28 for their heating – households, businesses or community buildings.

There is NO registration or annual membership fee. The scheme is run online where members can register, order and pay for their oil. If you are one of the 20% of rural Derbyshire that do not use a computer or have reliable access to the internet then you can manage your account through the Project Manager at RAD.

There is no obligation to buy your oil through the scheme, you can dip in and out of it depending on your needs. RAD will always be able to negotiate a better oil price than you would be able to arrange with a supplier in the same period due to the quantity they are negotiating with.

RAD orders oil once a month on behalf of their 'members' and negotiate with up to 8

oil suppliers for the best possible price.

For more information on the scheme please contact the Project Manager, Emma Simpson at RAD on 01629 592970 / 0845 313 8800, email

oil@ruralactionderbyshire.org.uk or visit the RAD website:

www.ruralactionderbyshire.org.uk/oil

RURAL ACTION DERBYSHIRE
Town Hall, Matlock, DE4 3NN.
Charity No: 1061531

PANTOMIME JANUARY 2022 - CANCELLATION

It was with much regret that we had no alternative but to cancel our popular parish Panto due to the omicron variant.

We had started rehearsals in September 2021 and everyone worked very hard towards performing "Cinderella". Unfortunately, for the second time, she was not going to the "Ball!"

But it's 3rd time LUCKY as Cinderella WILL GO TO THE BALL in 2023, Oh yes she will!!

PARISH APPEARANCE/MAINTENANCE

The flowerbeds adjacent "The Black Swan" and the public toilets are maintained under contract for the Parish Council. Volunteers continue to pick litter around the parish and fly tipping is reported promptly to the District Council.

PARISH COUNCILS AND MEETINGS

Parish councils and parish meetings work towards improving community well-being and providing better services at a local level. Their work falls into three main categories:

- representing the local community;
- delivering services to meet local needs; and
- striving to improve quality of life in the community.

Through a range of powers, parish councils provide and maintain a variety of important and visible local services including allotments, bridleways, burial grounds, bus shelters, car parks, commons, community transport

schemes, crime reduction measures, footpaths, leisure facilities, local youth projects, open spaces, public lavatories, planning, street cleaning, street lighting, tourism activities, traffic calming measures, village greens and litter bins.

Residents are welcome to attend and speak at Parish Council Meetings under the 'Public' section. Parish Council Meetings are held on the third Tuesday of every month (except August when no meeting is held) in The Sports Pavilion, Milken Lane, Ashover and commence at 7.00pm. Public Speaking is invited for the first fifteen minutes of every meeting, when anyone from the parish may raise any issue with the Parish Council. A copy of the Agenda, together with notification of planning applications, Parish Clerk's Report, Minutes of the previous meeting and other information may be found on the Parish Council website:

www.ashover-pc.gov.uk and the main notice board on Moor Road. A summary of each meeting is published in 'The Derbyshire Times' "Grassroots" section and is also available on the Parish Council website along with other press releases.

PARISH COUNCIL SURGERIES

These are presently held at 6.45pm for fifteen minutes prior to most Parish Council Meeting. Parishioners are encouraged to attend and express any concerns they may have on parish issues to a Parish Councillor and the Parish Clerk if they are unable, or do not wish, to attend and speak at the main meeting under 'Public Speaking'.

PARISH HALL

We would like to thank the local community, our regular hirers and trustees for their continued support over the last year in difficult times.

Despite various restrictions, our function rooms have been chosen to hold a wide variety of events and regular classes (some of which you also may like to join yourself!).

Fitness and dance classes currently held with us

include Yoga with Jenny Meadows, a new yoga class with Debbie Neath, Karate with Mike Douglass and new group, Wingerworth Fencing have joined us. Pilates with Liz on Tuesday evenings has literally gone from strength to strength with new members welcome at either of her 2 classes!

A new course with Lynne Pope's Spanish Class are fully underway. Other regular groups include Produce Club, Badminton, Indoor bowls, Parish Panto, Ashover Seniors, Ashover Art Group, Ashover Brass Band, W.I. and Young Farmers.

Wednesday morning's host 'Tots & Tinies playgroup' where parents and carers have a well-deserved cup of tea whilst the children have a wide variety of toys, organised activities and songs to keep them busy!

For the older children - Ashover Brownies now meet weekly at 6pm (term time) in our Amber Hall, followed by Guides & occasionally Rangers at 7pm.

For those with a creative flair, Jonathan Moseley who is one of the UK's leading designers in the floral art world has many classes and workshops booked through the year.

All groups are open to new members and support.

We would be happy to provide you with further information on any of these existing groups, as well as offering advice and assistance with marketing should you wish to start a new class yourself.

Please take a look at our website www.ashoverparishhall.com or social media pages (Facebook & Instagram) which provides information on hiring the hall and photos for inspiration with your own event.

We also held a local band night with "Waking Vegas" which was an excellent evening's entertainment which was well received by the village and local residents.

For 2022 the hall has chosen to support 2 charities (Parkinson's and Cystic Fibrosis) and will hold more charity events in the coming months.

We have as always had the pleasure of hosting many wonderful weddings, birthday, life and

anniversary celebrations.

If you would like our help to create the perfect event or celebration please get in touch:

Tel: 01246 590005

Email: info@ashoverparishhall.com

Website: www.ashoverparishhall.com

Manager

ASHOVER PARISH HALL EVENTS CENTRE

PAROCHIAL CHURCH COUNCIL

Life at All Saints Church has gradually returned to normal, after we reopened for services at the beginning of June 2021.

Again, as in 2020, recorded services were delivered on-line during the time the church was closed. These services were shown on the Amber Churches YouTube channel, which could also be accessed through the Amber Churches website

www.amberchurches.org

Children's activities have also resumed (Allsorts, Acorns and SmARTies) and an additional craft group has started on Friday afternoons after school. Initially children and parents met outside but during the colder weather moved into the Bassett Rooms. This aims to be another bridge-building exercise between church and community.

Some members of our Celebration Choir commenced visits to Grove Park and Grove House to sing to the residents. Due to the pandemic restrictions, the choir stand outside to sing whilst the residents, well wrapped up, sit in Grove Park lounge with the door open! The Village Coffee Shop, Film Time and Knit n' Natter, are now all up and running again. These are open to all in the parish, not just regular churchgoers. Unfortunately the Pantomime and Parish Party had to be cancelled in 2022 due to Covid. A Home Group for Bible study and fellowship, continued to meet fortnightly on Zoom through the pandemic, then in the Bassett Rooms but now back in homes! Sunday @ 6 meets on the 2nd Sunday in the month in the Bassett Rooms to pray for the Church, our community and the needs of the wider world. During the colder weather we have

met for Sunday morning worship on 3 occasions upstairs in the Bassett Rooms, which has proved very successful.

The highlight of the year has been the appointment of the Rev Dr Peter Bold to be our Priest-in-Charge. His Licensing Service took place on Sunday 20th February in Ashover, which was led by the Bishop of Repton and the Archdeacon of Chesterfield. We welcome Peter and Candy into our community and look forward to working with them. Peter will work on a part-time basis and his ministry covers Ashover, Brackenfield, Wessington and Handley Churches. We acknowledged the ministry of Celia Kelly as a Reader for many years, who retired at the end of January 2022, with a presentation at the end of the morning service on 27th February.

The Amber Churches website (www.amberchurches.org) continues to provide information, news and a calendar of upcoming events. The Amber Churches also produce a monthly newsheet, Amber News, which is available free of charge at the Post Office and some local shops, as well as being accessible on the Amber Churches website.

**Parochial Church Council
All Saints Church, Ashover
Registered Charity Number 1174119**

PLANNING

Your Parish Council is one of several consultees whose comments are sought by the District Council on planning applications. Unless applications are received after agenda issue, those to be considered by the Parish Council are listed on Appendix I which is published with the agenda and posted on the main notice board and on the website. Applicants are encouraged to address the Parish Council, either in person or in writing, when their application is to be considered. Details of all applications, including associated documents, may be found on the District Council's website at www.ne-derbyshire.gov.uk.

PLAY AREA - CHILDREN'S MURAL

2020 saw the completion of the New Parish Play Area for the children of the Parish of Ashover.

The intention was to always have an official opening, but of course COVID derailed this, therefore the Parish Council decided to focus on a mural to mark the event and what better person to create such a mural but Lilly Hammond.

Lily Hammond is one of our parish's shining artists. Lily has been bought up in the parish and been a big part of the community all her life. Lily for many months taught art sessions in Anna's Shop, and held online art sessions through lockdown, so is close to many of the children. As the Parish Council wanted to focus on the children, we therefore asked Lily to work with them to design and produce a mural that will replace a more traditional commemorative plaque.

We are very excited to show you what Lilly has created. It is a piece of art that includes over 250 individual pieces, all completed by children in our community!

It has been wonderful to see the children of the parish and beyond using our wonderful parish play area and given it is the Queens Platinum Jubilee in June, the Parish Council thought it was a perfect opportunity to unveil the mural as part of the Jubilee Celebrations.

POTHoles, PAVEMENTS & OTHER PROBLEMS

Derbyshire County Council has a facility for reporting problems with potholes, pavements, flooding, gritting, street furniture etc. Visit the DCC homepage at www.derbyshire.gov.uk and click on 'report a road fault' etc. then follow the links to the online fault reporting form. After entering details, including an opportunity to upload a photo of the problem, you will be given a reference number, enabling you to keep track of action taken by DCC.

PUBLIC CONVENIENCES

Following threat of closure by the District Council in 2008, the old stone public conveniences on Moor Road were taken over by the Parish Council and refurbished in 2013, including the redundant telephone kiosk in the small room at the front of the



building, which was turned into an Information Point featuring parish news, attractions, maps, details of local walks and now a 'Book Swap' corner.

Ashover is believed to be one of the few parish councils to accept responsibility for upgrading and maintaining its public conveniences.

PUBLIC SPACE PROTECTION ORDER (PSPO)

Dog mess is unfortunately an unpleasant aspect of dog ownership. It is every owner's duty to clean up after their dog – there is no excuse for leaving it behind.

North East Derbyshire District Council is committed to ensuring that dog owner's act in a responsible way.

Enforcement of the PSPO was delayed due to the coronavirus pandemic. As well as introducing a number of new offences relating to dog control, the fine for failing to clear dog mess will be increased to £100.

Residents should be encouraged to report breaches of the PSPO to the council via 01246 231111 or by email to environmentalhealthadmin@ne-derbyshire.gov.uk and the dog wardens will investigate, issuing fines if necessary.

For more information on PSPO's etc. visit <https://www.ne-derbyshire.gov.uk/environmental-health/animals-and-pests/dog-management-pspo>

Ashover Parish Council has provided 13 dog bins sited around the parish and these are located as follows:-

ASHOVER – Moor Road, Church Street, Narrowleys Lane, Crompton Lane, Dovecotes entrance to field, Cricket Pavilion, Milken Lane car park, The Fabrick (2), Cemetery.

OVERTON – near right of way.

KELSTEDGE – Westedge Close.

LITTLEMOOR – adjacent bus shelter.

RIGHTS OF WAY

These are ultimately controlled and maintained by Derbyshire County Council. The Parish Council undertakes minor works via its Minor Maintenance Agreement (MMA) with DCC. If you wish to report any issues relating to rights of way there is an online facility at www.derbyshire.gov.uk/prow Furthermore, you can view the entire rights of way network by visiting the Council's website and searching for 'Mapping Portal' where visitors can view a wealth of information, including Rights of Way. Information relating to Modification Orders may be viewed here: <https://apps.derbyshire.gov.uk/applications/right-of-way/>

During 2021/2022 your Parish Council used its total Minor Maintenance budget of £675 on minor maintenance to rights of way around the parish (path nos. 134, 77, 23,151, 48, 145, 153, 135, 136).

RIVER AMBER

If you witness any pollution of the river, please report this immediately to:- 0800 807060 24 hours a day <https://www.gov.uk/report-an-environmental-incident>

RYKNELD HOMES

At Rykneld Homes we are working hard to ensure our services are meeting the needs of our customers and local communities after two very difficult years.

We are pleased to have been able to restart our estate walkabouts with customers – which are a great opportunity for tenants and residents to discuss any issues with our staff. Details of when we will be in the Ashover

area over the coming year can be found on our website at www.rykneldhomes.org.uk Over the past 12 months Rykneld Homes has been working with North East Derbyshire District Council on a £12.8million regeneration scheme to improve more than 400 non-traditionally built properties across the district. The work has received a significant funding contribution from the Government's Green Homes programme. We are fitting External Wall Insulation to improve the energy efficiency of the homes - making them easier to heat and keep warm and reducing their carbon footprint – improving the environment for everyone. North East Derbyshire MPs Lee Rowley recently visited the work we are doing in Unstone and met with customers. Rykneld Homes is also working with the Council to build more new homes in the district to help people onto the property ladder. A planning application for 72 homes in North Wingfield has been submitted with an outcome expected in spring 2022 – the development will include homes for open market sale, shared ownership and for rent. Work has already started on nine new Council bungalows in Danesmoor which will be fitted with the latest housing technology including air source heat pumps, solar photovoltaic panels, electrical vehicle charging points and customer care options such as remote door entry system, fall notification and care alarm service.

Jill Ward

COMMUNICATIONS MANAGER, RYKNELD HOMES

SCAMS AND CYBER SECURITY

Derbyshire Police has issued the following advice on how to better protect yourself against unwanted calls:-

- *Be sceptical*
- *Take your time*
- *Know who you are dealing with*
- *Protect your financial information*

If you want assistance in finding out if it is a scam contact Consumer Direct on 08454 04 05 06.

If you want to cut the junk contact:-
Mailings - 0845 703 4599 or www.mpsonline.org.uk (Registration is free)
Telephone Calls - 0845 070 0707 or www.tpsonline.org.uk (Registration is free). You can also contact your telephone company to block callers who withhold their number.
Text/SMS - 0845 070 0707 or www.tpsonline.org.uk . If you then receive a message you don't want you can reply with the word STOP.
Email - if you would like advice go to www.getsafeonline.org

IF IT LOOKS TOO GOOD TO BE TRUE, IT PROBABLY IS.

Derbyshire County Council Trading Standards and Citizens Advice North East Derbyshire are working together to highlight the problems of scams and fraud, through Derbyshire Scam Watch.



Scams affect the lives of millions of people across the UK. People who are scammed often experience shame and social isolation as a result. Scams come in many forms; uninvited contact is received by email, letter, and many of these sorts of scams but some of the most common are fake lotteries, deceptive prize draws or sweepstakes, clairvoyants, computer scams, and romance scams. The criminals attempt to trick people with flashy, official looking documents or websites, or convincing telephone sales patter, with the aim of persuading them to send a processing or administration fee, pay postal or insurance costs, buy an overvalued product or make a premium rate phone call. Doorstep Scams are crimes carried out by bogus callers, rogue traders and unscrupulous sales people who call, often uninvited, at people's home under the guise of legitimate business or trade. Derbyshire Scam Watch is urging members

of the public to be aware of the issues and to be alert if they feel friends or relatives are vulnerable to such frauds. Trading Standards nationally are promoting a campaign called 'Friends Against Scams'. This includes 30 minute online learning package will help people to learn more about the issues.

If you like would like to talk to someone about scams then please contact scamwatch@nedcab.org.uk

You can report your suspicions about any scam to Citizens Advice Consumer Helpline on 03454 040506

Report fraud and internet crime to Action Fraud – www.actionfraud.police.uk

To learn more about scams and become a 'Friend Against Scams' – go to <https://www.friendsagainstscams.org.uk/>



SPEED AWARENESS

In 2014, eleven parish councils in the North East Derbyshire area clubbed together to provide a speed camera for police to use in a joint bid to make local roads safer.

Ashover, Brampton, Heath and Holmewood, Morton, North Wingfield, Pilsley, Shirland and Higham, Stretton, Sutton cum Duckmanton, Tupton and Wingerworth parish councils have all contributed to the campaign and provided funding for the camera and its maintenance. The camera is deployed, on average, once a week in one of the partnership parishes. Police Officers using the device informed councils that it is an excellent tool in tackling the issues of speeding in our areas.

To contact your local Safer Neighbourhood policing team call 101, or visit the website: www.derbyshire.police.uk.

Your Parish Council is campaigning to make the A632 through Kelstedge safer and Kelstedge residents have volunteered for the Community Speed Watch initiative. Your Parish Council requested that the highway authority provides fixed speed cameras at Kelstedge, however, the highway authority did not consider this to be justified. The Police & Crime Commissioner has launched a trial speed indicator device initiative and your Parish Council is currently looking into the feasibility of this proposal for Kelstedge. For further information regarding speed enforcement in Derbyshire please visit the CREST web site: www.crestderbyshire.org

STREET FURNITURE/PROPERTY

A rolling programme continues to operate for the maintenance of parish owned street furniture, including parish seats, bus shelters and notice boards and parish owned property. Risk assessments and inspections have been undertaken in accordance with legal requirements.

SUBSCRIPTIONS

Your Parish Council continues to subscribe to the Derbyshire Association of Local Councils (DALC) and the Institute of Cemetery & Crematorium Management (ICCM) on an annual basis. DALC offers free legal and professional advice on all aspects of parish and town council business backed up by experts at NALC (National Association of Local Councils) and regular information circulars. Likewise ICCM also offers free advice to its members and regular newsletters.

TENNIS CHESTERFIELD COACHING REPORT 2022/2023

Tennis coaching returned to Ashover Parish Courts post the third lockdown on 30th March 2021. The regular Tuesday night coaching programme resumed 4-8pm and it was great to see that the numbers on the programme were still very high, with 50 players on the programme as we restarted.

Additionally, an Easter holiday camp took place in April that provided the opportunity for 24 children of ages 4-15 take part all week – the biggest turnout at an Ashover Easter Holiday Camp.

The numbers on the Tuesday night programme continued to steadily rise through spring and at the height of summer saw 59 players attending throughout the evening.

See below for a full rundown of classes and numbers;

4-5pm Blue Stage (4-6 yrs) - 10 players

4-5pm Red Stage (6-8 yrs) - 10 players

5-6pm Orange Stage (8-9 yrs) - 7 players

5-6pm Green Stage (9-10 yrs) - 6 players

6-7pm Yellow Stage (11-18 yrs) - 15 players

7-8pm Adult Group (18+ yrs) - 11 players

Tennis Chesterfield then ran 2 weeks of Summer Holiday Camps at Ashover Parish Courts in August. Both camps were extremely well attended and saw the most children ever attend Tennis & Multi-Sport Holiday Camps in Ashover.

Week 1: 2-6 August 2021 – 56 children

Week 2: 16-20 August 2021 – 67 children

As usual, the Tuesday night programme continued through Autumn and Winter, and although there has been some expected drop offs, it's pleasing to see the amount of players still enjoying tennis through more difficult weather at times!

Tennis Chesterfield would like to show their appreciation for recent improvements that have been made to the facilities at Ashover Parish Courts. With the courts being repainted and new LED floodlights being fitted, it has made the playing and coaching experience much greater and safer for all involved.

Upcoming Holiday Camp Dates at Ashover:
Easter:

19-22 April 2022

Summer:

1-5 August 2022

15-19 August 2022

TENNIS CLUB

Ashover Tennis Club meets on Friday evenings from April to October for social tennis, and also runs teams in the Derby and District league. We are always looking for new players - all standards welcome. For further details please contact the Membership Secretary via email: elliessalomoni@aol.com

TREE WARDEN

A question often asked is whether space is available in Ashover village to plant a tree as a memorial or to commemorate an event. We probably need to look wider within the parish for tree space, echoing the seats which Richard Felton has helped organise in unusual places. 100 trees approximately 1.5 meters high have been planted near the footpath between Butterley Top Farm and Ravensnest Tor. The trees stakes and ties were provided by the Local Authority Treescapes Fund/Derbyshire Tree Officers Group. We have also received 600 whips, predominantly hedging plants from an organisation called Tree Appeal, these whips will be used to establish new hedges and tree breaks. If anyone would like to find out more please contact me.

There have been some requests to fell and prune trees covered by tree preservation orders, some have been straight forward and some controversial. In a lot of cases the request has involved using a consultant which means that there is a clear map provided with a reasoned argument put forward as to why work should be carried out. I view the site and submit comments to the local authority based on what I know and the information I have received.

The proposed Tree Preservation Order on Stars Wood and Cockerspring Wood is not dead, it lapsed during the Covid lockdown and did not go to committee. I have been told that the issue will be addressed when NEDDC has a new arboricultural officer.

The state of woodland in general is a cause for concern, there appears to be little incentive to regenerate ageing woodland by replanting, controlling ivy and thinning of

self-set saplings. The fact that there might be a tree preservation order on a group of trees or woodland does not mean it is not to be managed. Whether or not they make an Order, authorities can consider encouraging landowners to bring their woodlands into proper management under the grant schemes run by the Forestry Commission. If a woodland subject to an order is not brought into such a scheme, authorities can still encourage applications to manage the trees in ways that would benefit the woodland without making a serious impact on local amenity, for example by making a single application for regularly repeated operations (GOV.UK Tree Preservation Orders and trees in conservation areas).

If there are any issues involving trees or hedges which you would like to discuss, please contact me on 01246591949 or 07757691834.

Linda Stephenson
TREE WARDEN

TRUSTED TRADER SCHEME (Derbyshire County Council)

Finding a company that you can trust to do some work for you can be a bit daunting – how can you be sure that you won't get ripped off? What if things go wrong? How do you choose between lots of different companies? These sorts of dilemmas were a driving force behind the setting up by Derbyshire County Council of the Trusted Trader scheme to help local people find traders and businesses that do a good job at a fair price and provide good customer service.

That was back in 2008 and the popular scheme has gone from strength to strength. These days there are nearly 17,000 searches each month on the Trusted Trader website, www.derbyshire.gov.uk/tt by people looking for reliable companies to use. Another ringing endorsement for the scheme was a recent survey which gathered feedback from more than 16,000 people who had used a Trusted Trader and an impressive 94% said they were very satisfied with the service they received.

So people can have lots of confidence when

employing one of the 1,200 traders who are part of the scheme. In the very unlikely event of someone having a problem with one of the traders then help is at hand. Derbyshire County Council trading standards officers can get involved in any queries involving Trusted Traders and seek to resolve them.

The scheme particularly helps to protect older and vulnerable adults by making it easier for them to use Trusted Traders rather than rogue traders who typically cold-call and use high pressure sales techniques. A recent development has been the inclusion of Financial Advisors who specialise in providing financial advice for people in later life and can help with matters like care fees, pensions and investments.

Find out more about all aspects of Trusted Trader at www.derbyshire.gov.uk/tt or call 01629 536148. Enquiries are also welcome from businesses interested in signing up to the scheme.

UPPERTOWN SOCIAL CENTRE

The Centre provides a first class facility for social activities for the people of Ashover and surrounding areas. It has comfortable and up to date facilities for parties, birthdays, weddings and other special occasions but is equally suited to conferences, training sessions or meetings.

Facilities include:

- Licensed bar
- Fully fitted kitchen for outside caterer or hirer use
- Function room for up to 120 people
- Car parking for 25 cars (this area can be used to erect a marquee)

The Centre is run on a not for profit basis as a charity, which would not be possible without the committee of local people and a group of willing volunteers.

For information on events visit

www.uppertown.org
or telephone 07966 154798.

Registered Charity Number 1023876

Uppertown Social Centre

A Registered Charity (Number 1023876)

Uppertown, Ashover, Chesterfield, Derbyshire, S45 0JF



Events for 2022

Sat. 5th February 7pm for 8pm	John Pickering 50's 60's Country	£8.00 incl supper
Sat. 26th February 7pm for 8pm	Groundhog Days 80's night	£12.00 incl supper
Sat. 19th March 7pm for 8pm	Acorn Roots Folk and Irish—St Patrick's Night	£12.00 incl supper
Sat. 9th April 7pm for 8pm	Music Masters 50's & 60's	£14.00 incl supper
Sat. 7th May 7pm for 8pm	The Motownellas Girls Trio—Motown Night	£16.00 incl supper
Sat. 28th May 7pm for 8pm	Dark Lightning Soul—Roll	£12.00 incl supper
Sat. 25th June 7pm for 8pm	The Haleys Country & 50's	£14.00 incl supper
Sat. 9th July From 3pm Disco from 6pm	Summer BBQ Stalls—Games—Disco—Refreshments— Bar	Free entry
Sat. 3rd September 7pm for 8pm	Dermot Hegarty Irish—Folk	£13.00 incl supper
Sat. 24th September 7pm for 8pm	Jonny & Lynnette Country Music Duo	£12.00 incl supper
Sat. 15th October 7pm for 8pm	Manshoba Dance Music 50's to the present day	£13.00 incl supper
Sat. 29th October 6:30pm start	Halloween Night Disco—Games—Fancy Dress Refreshments—Tuck Bar	£5 admission £15 family of 4 Under 5's free
Sat. 12th November 7pm for 8pm	Jason Dale (King~Cash Show) Elvis Presley—Johnny Cash	£15.00 incl supper
Sat. 3rd December 7pm for 8pm	Pat Jordan & Finians Rainbow Irish - 60's 70's 80's—Dance Music	£15.00 incl supper

To book tickets in advance ring Eddie on 07966 154798

www.uppertown.org

March 2022 subject to alteration without notice.

WAR MEMORIAL

Your Parish Council continues to maintain the War Memorial and lays a wreath each year and displays large poppies around the parish to remember those who lost their lives in all wars.



WASTE RECYCLING (Derbyshire County Council)

Household Waste Recycling Centres (or Civic Amenity Sites) are provided by the county council for the disposal of waste produced from households which is either too large or too bulky to be accepted by the normal district council weekly collection. Your nearest site is located at Stonegravels, Sheffield Road, Chesterfield which has full recycling facilities. The site is open seven days a week from 8.30am – 6.00pm (closed 25/26 December and 1 January). Derbyshire County Council
You can contact Call Derbyshire by tel: 01629 533190 or by texting 86555.

WEBSITE – www.ashover-pc.gov.uk



Your Parish Council's website is www.ashover-pc.gov.uk, and is the gateway into the parish council and numerous local services, from there you can also find links to other organisations including North East Derbyshire District Council and Derbyshire County Council.

The site contains, along with many other things, items of news, advice of road closures in the parish, links to leisure facilities, you can even have a look at your Parish Councillors and Parish Council staff. There are links to your Local Councillor, District Councillor and Member of Parliament.

There are calendars for council meetings and events and leisure activities taking place in the Parish.

There are forms to report problems and issues within the Parish, there is an A-Z link where there is a whole raft of information about the Parish, County and District Councils.

Why not have a look at it at www.ashover-pc.gov.uk you can also find us on Facebook and Twitter.



FINANCIAL REPORT PRECEPT 2022/2023

At the Parish Council meeting held on 19 October 2021, consideration was given to the recommendations of the Finance Committee for the precept application for 2022/23.

The Finance Committee had deliberated each code and cost centre in the accounting system, recognising the need to limit expenditure as far as possible due to current restraints and economic climate and taking into account a realistic income figure. The Capital Assets Renewal Programme continued to be included in the precept sum and this would be revised to reflect ongoing capital expenditure and to include new capital purchases. Members recognised the requirement to retain six months precept reserves at all times, whilst being aware of access to earmarked reserves. No further Tax Support Grant Funding would be received from NEDDC. Additionally, it was anticipated that, due to a potential increase in dwellings and proposed growth, any increase would be spread over more properties and therefore should have a lesser impact on individual households.

Having deliberated the budget for the Financial Year 2022/2023, an anticipated realistic income figure of £15,475.00 set against an anticipated expenditure figure of £93,047.00 plus earmarked reserves of £12,183.00, produced an annual **Precept figure for 2022/2023 of £89,755.00**. This represents a £6,386.00 increase (approx. 7.6%) on the previous year due to provisions for Platinum Jubilee Celebrations (£5,000.00), additional cemetery maintenance (£2,000.00), increased energy charges (£700.00).

COST CENTRE	ANTICIPATED FIGURES			
	Exp. 2021/22	Inc. 2021/22	Exp. 2022/23	Inc. 2022/23
	£	£	£	£
Administration	40302	2570	37087	2575
Section 137	600	0	600	0
Pavilion/Courts	5250	1040	6050	840
Public Toilets	2200	0	2480	0
Capital Projects	10472	0	12183	0
Allotments	300	60	300	60
Cemetery	10650	10000	12400	12000
Parish Maintenance.	27265	0	34130	0
TOTALS	97039	13670	105230	15475
PRECEPT	2021/22	£83369	2022/23	£89755

Summary Receipts & Payments Year Ended 31 March 2022

(Awaiting External Audit)

Year Ended 31 March 2021		Year Ended 31 March 2022
Receipts		
81832.00	Precept Received	83369.00
713.14	Interest Received	33.59
82545.14	Total	83402.59
Operating Income		
35367.07	Administration	5909.75
960.65	Pavilion	1648.65
60.00	Allotments	60.00
15420.00	Cemetery	11915.00
8059.90	VAT	24381.53
142412.76	Total Receipts	127317.52
Running Costs		
36004.07	Administration	35401.01
643.88	Section 137	235.00
2897.77	Pavilion	2143.33
3422.27	Toilets	2769.05
42681.82	Capital Projects	22022.67
197.16	Allotments	306.62
9873.59	Cemetery	11550.36
30528.34	Parish Upkeep	30490.94
16231.07	VAT on Payments	12983.49
142479.97	Total Payments	117902.47

Summary Receipts & Payments Year Ended 31 March 2022

(Awaiting External Audit)

Year Ended 31 March 2021		Year Ended 31 March 2022
Receipts & Payments Summary		
125074.22	Opening Balance	15007.01
142412.76	Add Total Receipts	127317.52
267486.98		252324.53
142479.97	Less Total Payments	117902.47
125007.01	Closing Balance	134422.06
Cumulative Funds represented by:		
48778.66	Current/Reserve Account	28184.11
76228.35	National Savings Account	106237.95
125007.01		134422.06

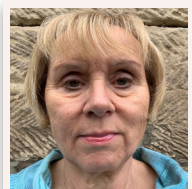
YOUR PARISH COUNCILLORS - ELECTED 02 MAY 2019



William Armitage
Green Bank
Hockley Lane
Ashover
CHESTERFIELD
S45 0ER
01246 590486



Rosemary Early
Lexley Gables
Hockley Lane
Ashover
CHESTERFIELD
S45 0ER
01246 590738



Helen Boffy
Langford House
Narrowleys Lane
Ashover
CHESTERFIELD
S45 0AU
07515 280707



Richard Fidler
Porthlea
Alton Lane
Littlemoor
Ashover
CHESTERFIELD
S45 0BE
01246 590155



John Cook
Farhill House
Milken Lane
Ashover
CHESTERFIELD
S45 0BB
07803 230702



Lucy Hunter-Bott
Marshbrook
Butts Road
Ashover
CHESTERFIELD
S45 0HW
07976 733607



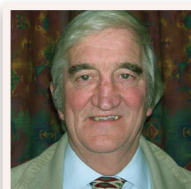
Steve Dronfield
Willow Tree Farm
Hungerhill Lane
Stonedge
CHESTERFIELD
S45 0LP
01246 590721



Chris Miller
Hill House
Hill Road
Ashover
CHESTERFIELD
S45 0BX
01246 590253

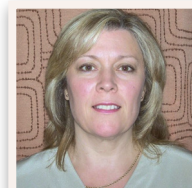


Nigel Early
Lexley Gables
Hockley Lane
Ashover
CHESTERFIELD
S45 0ER
01246 590738



Ed Willmot
The Pines
Hill Top Road
Ashover
CHESTERFIELD
S45 0BZ
01246 590260

YOUR PARISH COUNCIL STAFF



Sara Atkinson
Parish Clerk & RFO
The Sports Pavilion
Milken Lane
Ashover
Chesterfield S45 0BA
01246 863018

parishclerk@ashover-pc.gov.uk



John Bown
Health & Safety
Monitor/
Toilet Attendant

YOUR COUNTY AND DISTRICT COUNCILLORS



Barry Lewis
DCC Councillor
2 King George Street
Wessington
Derbyshire
S55 6DZ
01773 830871
Mobile: 07920484207



William Armitage
NEDDC Councillor
Green Bank
Hockley Lane
Ashover
CHESTERFIELD
S45 0ER
01246 590486

For information and help on the following services, please call the appropriate authority (details at the right of this page) or visit www.ashover-pc.gov.uk and click on the A-Z of services :-

Bulk Waste Collection Service	NEDDC
Bus Shelters	APC
Car Park (Milken Lane)	APC
Cemetery (Ashover)	APC
Council Tax	NEDDC
Common Land	APC
Dog Waste Bins	APC
Dog Wardens	NEDDC
Education	DCC
Energy Advice Centre	NEDDC
Environmental Health	NEDDC
Fly Tipping	NEDDC
Grit Bins	APC/DCC
Highways	DCC
Housing	NEDDC
Libraries	DCC
Licensing	NEDDC
Parish Plan (Ashover parish)	APC
Parish Seats	APC
Pest Control	NEDDC
Planning Permission	NEDDC
Play Area (Ashover)	APC
Playing Field/Hard Courts (Ashover)	APC
Potholes	DCC
Public Toilets	APC
Recycling (inc. blue box/bag scheme)	NEDDC
Refuse Collection	NEDDC
Reg. of Births, Deaths, Marriages	DCC
Register of Electors	NEDDC
Rights of Way (footpaths/bridleways)	DCC
Social Services	DCC
Street Cleaning	NEDDC

Street Lighting Repairs	DCC
Trading Standards	DCC
War Memorial	APC

NEDDC

North East Derbyshire District Council
2013 Mill Lane
Wingerworth
Chesterfield
S42 6NG
Tel: 01246 231111

DCC

Derbyshire County Council
County Hall
Matlock
DE4 3AG
Tel: 01629 533190

APC

Ashover Parish Council
The Sports Pavilion
Milken Lane
Ashover
Chesterfield
S45 0BA
Tel: 01246 863018

EMERGENCY SERVICES

Always dial 999 in case of an emergency

Derbyshire Police

101 (calls to report crime, anti-social behaviour, non-violent crime or general information)

Please note: You **MUST** continue to use 999 where a crime is in progress, for serious crime or where violence is being used.

Derbyshire Fire & Rescue

Administrative and fire safety enquiries:
01332 771221

Power and supplies

Electricity: Central Networks
(emergency) 0800 056 8090

Gas (emergency) 0800 111 999

Severn Trent Water (emergency)
0800 783 4444
or 0845 9881188 (flooding)

National Floodline
0845 988 1188

Hospitals/medical

NHS 111 is a service to make it easier for you to access local NHS healthcare services in England. You can call 111 when you need medical help fast but it's not a 999 emergency. NHS 111 is a fast and easy way to get the right help, whatever the time.

NHS 111 is available 24 hours a day, 365 days a year. Calls are free from landlines and mobile phones.

Royal Derby Hospital
01332 340131 - Main switchboard

Chesterfield Royal Hospital
01246 277271

Buxton Hospital
01298 214000

INFORMATION AND HELP

Derbyshire County Council – 01629 533190

North East Derbyshire District Council - 01246 231111

Lee Rowley MP - Parliamentary

Constituency

Office of Lee Rowley MP
Eckington Business Centre
Market Street
Eckington
Derbyshire
S21 4JH
Tel: 01246 439222
Email: lee.rowley.mp@parliament.uk

Social media

 Twitter: @lee4ned

