



ISSUE no.1  
2023/2024

Ashover  
Community First

# Ashover Parish Council Annual Report 2022/2023



LOCAL COUNCIL  
AWARD SCHEME  
QUALITY

Working for the whole of the Ashover Parish  
Website: [www.ashover-pc.gov.uk](http://www.ashover-pc.gov.uk)

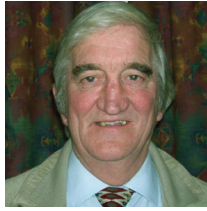


## CONTENTS

CHAIRMAN'S REPORT	4	Parish Appearance/Maintenance	17
Allotments	8	Parish Councils and Meetings	17
Alton Nature Reserve	8	Parish Council Surgeries	18
ANNOUNCEMENTS	6	Parish Hall CIO	18
Ashover Brass Band	8	Parochial Church Council	19
Ashover Charities	9	Planning	20
Ashover Medical Centre	9	Platinum Jubilee 2022	7
Ashover Parish Councillors	30	Playground – Opening	20
Ashover PPG	10	Potholes, Pavements etc.	20
Ashover Show 2023	10	Public Space Protection Order	20
Book Exchange	11	Remembrance Sunday 2022	21
Cemetary	11	Rights of Way	21
Christmas Tree Lights 2022	11	River Amber	22
Climate Change	12	Scams and Cyber Security	22
Common Land	12	Speed Awareness	22
Community Car Scheme	12	Speed Awareness - SID Trial	23
Communication	12	Street Furniture/Property	24
Coronation 2023	7	Subscriptions	24
County/District Council Liaison	12	Town Crier	6
Cricket Club	12	Tennis Club	24
Defibrillators	13 & 34	Tree Warden	24
Donations/Grants	13	Trusted Trader Scheme	24
Employees	13	Uppertown Social Centre	25
Financial Report	27	Waste Recycling: DCC	25
Footpath and Bridleway Group	13	Website – <a href="http://www.ashover-pc.gov.uk">www.ashover-pc.gov.uk</a>	26
Grit Bins	14		
Grounds Maintenance	14		
Hard Courts	14		
High Ashes Project (HARP)	15		
INFORMATION AND HELP	32		
Lee Rowley MP	33		
Litter Problems	15		
Local Council Award Scheme	15		
Neighbourhood Plan	16		
NEDDC Local Plan 2014-2034	16		
Newsletters	16		
Oil Buying Scheme	17		
Pantomime January 2023	17		

## CHAIRMAN'S REPORT

Dear Residents,



This being the end of the present Council's term of office prior to the elections in May 2023, every effort has been made to leave current business complete where possible. The last term of office presented difficulties due to the pandemic with things settling down in 2022/2023.

The events for 2022/2023 included the Queen's Platinum Jubilee, the Christmas Tree Lights switch-on and the coronation of King Charles III to complete the year, and as usual the events were well attended. Thanks go to our retiring Town Crier, Merrick, for his many years of service and a welcome to John Bown, his replacement. John's first day of duty was for the May Day celebrations. Thanks go to an anonymous donor for the cost of the firework displays for both the Jubilee and Coronation celebrations.

Once again, the financial support from Ashover Community Medical Centre Ltd. towards the Christmas Lights switch-on and replacement defibrillator cabinets was gratefully received.

In September 2022 a public meeting was called to address the local concerns regarding the speeding on the A632 and pollution of the River Amber. The attendance included the local MP, Leader of Derbyshire County Council, Highways, Police, Severn Trent, Parish Councillors and residents. A further public meeting is planned once the required information and data is available. A matched funding grant of £3,000.00 from the Police and Crime Commissioner has been secured against the purchase of two speed indicator devices to be located at Kelstedge.

Transfer of ownership of car park trust land from Ashover Parish Hall CIO to Ashover Parish Council has now been completed.

The Finance Working Group's recommendation of £89,755.00 for the annual precept for 2023/2024 has been accepted and I'm pleased to say there is no increase on the previous year.

Helen Boffy resigned as a Parish Councillor having left the area and we welcomed Councillor Jim Daykin onto the Council in December 2022.

Thanks go to William Armitage as the outgoing North East Derbyshire

CONTINUED ON THE NEXT PAGE...

District Council representative and welcome to District Councillor Helen Wetherall, who now takes on that role.

At the time of writing the resignation of William Armitage as a Parish Councillor left a vacancy for co-option and it is anticipated that this will be filled at the July 2023 Parish Council Meeting.

In conclusion to all Residents, Parish Councillors, Volunteers and the Parish Clerk, your contributions have been much appreciated.

Councillor Ed Willmot  
Chairman, Ashover Parish Council

## ANNOUNCEMENTS

### NIGEL EARLY RETIRES FROM ASHOVER PARISH COUNCIL



After more than 20 years of service to the community, Nigel Early has now stepped down from his role as a Parish Councillor. Many of you will know him from his years as the village GP located above the Tuck Shop in Church Street where his wife Rosemary was the practice manager.

Nigel maintains his keen interest as a supporter of the local cricket club, applies his DIY talents in the creation of scenery boards for the village's annual pantomime and his craftsmanship and eye for detail in building model boats.

Ed Willmot, Chair of Ashover Parish Council, said "Nigel has been an outstanding servant for the community over many years and his fellow Councillors and the clerk, will miss his wise counsel and jovial good humour at our meetings: we wish him well"

### TOWN CRIER



After 15 years of voluntary service, Merrick Bull retired from his role as Town Crier following the Christmas Lights Switch-on in December 2022.

Ashover Parish Council Members and the Clerk thank you Merrick for the laughter and charm you brought to the role of Town Crier for all those years.

Our new Parish Town Crier is John Bown who says:-

"I was very happy to commence my duties as Ashover Town Crier at the May Day festivities. I have three main qualifications:

- 1) I have a corpulent posture which is just right for the job
- 2) I have a very loud voice
- 3) I live in the Parish and attended Ashover School from the age of 5 to 15 years. Merrick will be a hard act to follow and I will certainly not be doing it for as many years as he has (15!), given that I am in my 80th year! I enjoyed the day which left me happy but exhausted."



## PLATINUM JUBILEE – JUNE 2022

Before the passing of our late Queen Elizabeth II in September 2022, we had the privilege of celebrating the Platinum Jubilee, marking 70 years of service to the people of the United Kingdom, the Realms and Commonwealth.



Celebrations began on Thursday 2 June 2022 in Ashover parish hall which included a firework display, organised by Ashover Parish Council, at around 10pm on the playing field.

On Saturday 4 June 2022 the celebrations continued with a full day of entertainment held on Church Street which was closed for the event and the day was led by our, now retired, Town Crier, Merrick Bull.

On Sunday 5 June 2022 there was to be an outdoor thanksgiving service on the playing fields, but unfortunately the heavens opened and it rained, so the service was held in All Saints Church, Ashover.

**Ashover Parish Council wishes to thank everyone who supported these events including sponsors and volunteers. Without their support, events like this would not be possible.**

## CORONATION 2023

On Saturday 06 June 2023 everyone celebrated the Coronation of King Charles III with an evening of music in the Parish Hall and fireworks on the field, whilst a vendor served a choice of hot food from the car park. Many thanks to the volunteers that helped make these celebrations a success.



## ALLOTMENTS

The allotments on Marsh Green are owned by the Parish Council and are presently rented by six residents.

## ALTON NATURE RESERVE

When 'Jim' Derek Mart, a resident of Alton, saw what Ogston Bird Club had achieved with land he had given them in Press, he offered them the field in Alton which he had used for his horse, Minty. Unfortunately, OBC did not have the people or finance to develop this site and decided it would look for an alternative organisation to manage the land and carry out Jim's wishes (Jim had died in November 2013).



In 2018 OBC contacted Ashover Parish Council who suggested that Alton villagers might take it

on. They did, with enthusiasm, and by January 2019 a charity had been set up in order to administer the field: 'Alton Community Land'. The Trustees decided to call the field 'Jim's Field' and to turn it into a haven for wildlife.

Jim's Field is about 2.2 acres, previously used as a quarry and farmland. It is proposed to maintain 68% of this as meadow, 20% as woodland and 12% as heathland. Heathland is quite a scarce habitat and this site is a smaller cousin of the environment on the Fabric, characterised by heather. The aim is to use these different habitats to increase the bio-diversity of the site by planting and attracting appropriate wildlife - flowers, trees, shrubs, birds, mammals etc.

There is a marked path around the site which is open to all as long as they treat the site and the wildlife with respect. There are also two benches from which you can enjoy the magnificent views across the valley.

Volunteers are always welcome to join in the enjoyable work in the open air to improve the site. Alternatively, you could share your

expert knowledge of buttercups, buzzards or butterflies (or other aspects of nature) to help guide us.

Please contact us through the website at:

<https://altoncommunityland.wordpress.com/>



## ASHOVER BRASS BAND

2022 has seen the Band back to its normal activities after the pandemic. We have had an extensive programme of engagements both within the Parish and further afield. Easter Sunday 2022 saw the return of the Sunrise Service on the Fabric for which the Band have provided music for more than 30 years. The 6 a.m start is well rewarded by a good breakfast in the Bassett Rooms. We also performed in Ashover Village for the Jubilee Celebrations at the parade on the Saturday, the Church Service on the Sunday morning followed by the Street party on a very wet but jolly Malthouse Lane street party in the afternoon. We even managed to fit in playing at a wedding reception in the Parish Hall in between! We also performed two Jubilee Concerts in June and July in Clay Cross and Ashover with the proceeds from the former going to the Ukraine Support Fund, with over £400 pounds raised for that deserving cause.

Other engagements included an extremely hot Ashover Show, the Armistice Service, and various locations around the Parish at Christmas. We were particularly appreciative of the residents from Littlemoor, Alton, Kelstedge and Milltown for their support at Christmas- thanks to all for their kind generations also. We have invested in some new Christmas music books

which we look forward to playing for you next Christmas. We played for Stonedged Chapel at their Christmas Carol Service in the Parish Hall- another long standing booking which we are grateful for. Further afield we performed for Woolley Show and in Birchover, Queens Park (a more sombre event taking place the weekend after the announcement of the death of Queen Elizabeth II), Chesterfield, Darley Dale, Youlgreave, Bakewell, Wingerworth, North Wingfield, Bolsover, Chatsworth House and Rail Ale Beer Festival at Barrow Hill.

2022 also saw the return of Andy Davey as our Musical Director after a gap of 3 years. Previously he was our Musical Director for 10 years so we hope he will beat that record this time around. We are also pleased that the Band membership has risen since the pandemic and we regularly have 25 or more players for Sunday night rehearsals in the Parish Hall. We have also restarted the Training Band on a Sunday night between 6:00 and 7:00pm in the Parish Hall under the leadership of Sarah Evans. It is open to learners both young and old, instruments are provided if you want to come along. Please help to ensure the future of the band by continuing to take up this wonderful hobby.

2022 was also the 50th anniversary of the Band reforming and to mark that John Surguy has written a history of Ashover Brass Band covering that period but also the old Band between 1837 and 1936. The 'Story of Ashover Brass Band - Warts and All' covers not just the Band but also some of the related social history of, and events within the Village over those 150 years. It is available from Anna's Tuck Shop, only limited copies remain.

Thank you to the residents of Ashover Parish and beyond for their continued support.

## ASHOVER CHARITIES

Since the fifteen century there has been a Charity Board in Ashover to administer the funds of the Charities and to make

donations to appropriate individuals. The Charities were mostly set up from bequests made by individuals in their wills with the purpose of helping those in real financial need. The trustees of these Charities would now like to hear about anyone who lives within Ashover parish who is experiencing financial hardship so that a small donation may be confidentially made to them. This opportunity will be available each year.

If you know of anyone who lives within Ashover parish and who you think might benefit from such a donation please contact:

The Ashover Charities Administrator

Andrew Hardwick

[hardwickad@gmail.com](mailto:hardwickad@gmail.com)

## ASHOVER COMMUNITY MEDICAL CENTRE LTD

Ashover Community Medical Centre is owned by a community-based trust, which is also a company limited by guarantee, and is leased to the medical practice. Money was raised to construct the medical centre through fundraising, contributions from local businesses and securing external grants. The advantage of the Trust owning the medical centre is that the funds that are generated are available to be distributed for the benefit of the local community, in accordance with the Trust's charitable objectives.

As we move on from the restrictions associated with the Covid pandemic the Trustees are pleased that grant applications have returned to the pre-pandemic level.

The Trustees have been able to continue to support local activities and causes through the provision of financial assistance. A wide range of groups have received grants from the Trust including celebrations for the Queen's Platinum Jubilee, coach trips for Ashover Seniors, equipment and pitch fees for two Ashover football teams, funding the hire of the Parish Hall for the pantomime, first aid training, equipment for Uppertown Social Centre, Ashover Brownies, Ashover Arts Group, a security upgrade for

defibrillators in the Parish, funding the Christmas lights switch-on, Ashover Lunch Club, Ashover May Day, Ashover Produce Club and the Woolley Moor Show.

The Trust aims to award approximately £10,000 in grants each year. By supporting the many and diverse activities the Trustees believe that the Trust plays a crucial role in maintaining a vibrant and active community.

Unfortunately, the roof of the surgery needs to be completely replaced. Owing to the significant cost this is to be done in stages. This work is partly complete and the Trustees would like to thank all of the staff at the surgery and patients for their cooperation whilst the work has been done.

The Trustees would like to encourage any local groups who provide projects or activities in the Ashover area to apply for a grant. Please send any enquiries to the Trust's email address at

[enquiries1acmel@outlook.com](mailto:enquiries1acmel@outlook.com)

The Trustees are Ed Willmot, Chair, Andrew King, Treasurer, Jacqueline Collins, Secretary, Lucy Taylor and Paul Winter.

### **ASHOVER PATIENTS PARTICIPATION GROUP**

In Ashover over the past three years two key Doctors have retired: Dr Jones in 2020 and Dr Emmerson in 2022. Both were prime movers in bringing together the Practices of Ashover and Imperial Road, Matlock to ensure the long-term survival of a Medical Centre in the village. In both cases the unrelenting pressures on General Practice, were significant factors in their decisions to retire together with many of the support staff at that time.

Despite the changes and pressures, the Medical Centre has continued to provide a good service to its patients. This is evidenced by the Annual National Survey of General Practice published last year by Ipsos Mori. It showed that in 2021 84% of Ashover patients surveyed believed they were receiving a good service as compared to 72% of patients nationally. Also, 70% of Ashover

patients found it easy to contact the Practice by phone as compared to the experience of only 53% nationally. The full Report is available from the Practice.

However, there continues to be in Ashover a significant minority of patients who cannot accept the changes that have taken place and are often abusive to the medical and support staff. This has had a demoralising effect, particularly on the support staff and caused many to leave. As a result, staff recruitment, training and retention is a major management problem for the Ashover Centre. If it continues it will seriously undermine the viability of the combined Practice that both Dr's Jones and Emmerson worked hard to establish.

To help ensure a high-level service, and working with members of the PPG, the Practice has drawn up a Charter. It sets out what the Practice will do for its patients, and in return, what patients can do in return. The Document is available on the Practice website at [www.ashovermedicalcentre.co.uk/practice-charter](http://www.ashovermedicalcentre.co.uk/practice-charter).

Therefore, to help ensure the continued presence of a Medical Centre in Ashover please would patients treat all members of staff with same courtesy, kindness and respect that they would like to receive for themselves.

Also, a brief reminder that the existence of the Centre also depends on the full use of the Dispensary. It generates a healthy and crucial income for the Centre so would all those who are eligible to use it please do so.

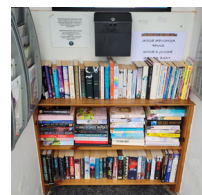
Thank you for your support and help in these matters.

*Gordon Johnson*

### **ASHOVER SHOW 2023 – 09 AUGUST**

For up to date information, please visit [www.ashovershow.co.uk](http://www.ashovershow.co.uk)

### **BOOK EXCHANGE**



There is a book swap facility in the Old Telephone Kiosk 'Information Point', situated by the Public Toilets on Moor Road in Ashover.

Please feel free to bring a book, in good condition, take a book or swap a book to help cut down on waste, encourage recycling and maybe try a book that you wouldn't normally read.

This facility is managed by volunteers.

### **CEMETERY**

The Ashover Parish Cemetery is a place used by many to remember their loved ones. It is a place of peace and tranquillity and the Burial Board are dedicated to maintaining the area in a manner that is sympathetic to the surroundings.

The next available section in the Cemetery has successfully been opened for burials. The regulations have been amended to maximise the efficiency of space used, by only allowing consecutive burials. No pre-reservation of space is allowed in the new section.

A Tree Survey was undertaken in January 2022 and a Hornbeam was identified with basal decay and this tree was subsequently removed. We continuously monitor our tree stocks for safety.

The annual review of cemetery maintenance was undertaken and following a formal tender Shed Grounds Maintenance Contractors, who are locally based, were awarded a 3 year contract. In the past year this has resulted in an improvement in the general amenity.

We carried out various specific improvements to the area by removing ivy and self-set trees, repaired and partially re-laid cemetery paths and reduced the height of the conifer hedge for ease of future maintenance.

We were identified to have a leaking water main at the entrance and this was repaired and a leak allowance obtained from Severn

Trent.

Under a separate contract we continue to weed kill the paths and borders to maintain their functionality.

We were made aware of an unfortunate incident in November 2022 with a school child being injured whilst playing next to the cemetery boundary. As a result we re-built the historically collapsed boundary wall. Burial records for Ashover Cemetery are digitised and maintained by the Burial Clerk. Original paper records have been archived. A number of memorials have been repaired and reinstated as part of our on-going programme to preserve the amenity of Ashover Cemetery. Smaller memorials are being stabilised for safety.

A 'Fees and Charges' list and other documentation for the cemetery may be found on the Parish Council's website at [www.ashover-pc.gov.uk](http://www.ashover-pc.gov.uk)

*Cllr Chris Miller*

CHAIRMAN OF THE BURIAL BOARD

### **CHRISTMAS LIGHTS 2022**



On Sunday December 4th the parish of Ashover gathered outside the Basset Rooms, singing carols with Ashover Brass Band and the Choir, to observe the parish tree bursting into light, and most importantly, the

children had the opportunity to meet a very special person!

Ashover Parish Council once again organised the annual lighting of the Parish Christmas Tree. The tradition of the switch-on of the lights began in 2006, when Prince Charles visited and carried out the first official 'Switch-On'. Since then, apart from a pandemic stopping us in our tracks, your Parish Council has been organising this

special event every year.

This year the tree was even bigger and better, and thanks once again goes to Ashover Community Medical Centre Ltd. for the generous grant towards the event. Thanks to our wonderful volunteers, each and every child got to spend time with our perfect Father Christmas in the beautiful and incredibly atmospheric grotto and told him what they wanted to open on Christmas morning; and of course the jokes kept coming from our fabulous Town Crier.

Thanks, this year also goes to our new Rector Revd Dr Peter Bold, who along with the children, pressed the big button to bring Christmas to the Parish.

A huge thanks goes out to all the volunteers, who gave their time to set up the event, without all those people it would not be possible.

CHRISTMAS EVENT VOLUNTEER GROUP

## CLIMATE CHANGE

In July 2020, Ashover Parish Council made a declaration to 'acknowledge that climate change is one of the largest challenges facing the world and also recognises that it is a key influencing body that can act on this'. The declaration continued 'Therefore it is essential that this Parish Council helps to proactively facilitate the protection of our local environment, heritage and natural beauty. This needs to be delivered in a way that promotes sustainability, healthy living and also prosperity within the parish. Through this mutually sustainable approach to living in the parish, we can help ensure that it can continue to be enjoyed by future generations indefinitely'. If any resident would like to volunteer to be a member of the Climate Change Working Group, please contact the Parish Clerk. The Group has been working towards linking habitats of value to wildlife in the parish, through the creation of wildlife corridor and has established a link with the District Council for the removal of litter collected by volunteers. Litter picks continue on an ad hoc basis and litter picking

equipment is available to borrow through the Parish Clerk.

## COMMON LAND

Your Parish Council continues to monitor common land, carrying out maintenance where necessary.

## COMMUNITY CAR SCHEME

The scheme covering Chesterfield, Ashover and Amber Valley is supported by the NHS, Derby City and Derbyshire County Council, CT4TC Community Transport for Town and Country. For more information telephone the booking line on 01773 746652.

## COMMUNICATION

If you wish to report on events within the parish to the local press, this can be done via the "Grass Roots" section of 'The Derbyshire Times' by e-mailing:- [grassroots@derbyshiretimes.co.uk](mailto:grassroots@derbyshiretimes.co.uk)

## COUNTY/DISTRICT COUNCIL LIAISON MEETINGS

County/District/Parish Liaison meetings/events are held during the year, with presentations and liaison on various issues. Your Parish Council is represented at these meetings.

## CRICKET CLUB ASHOVER BARBARIANS CC

BEveryone at Ashover Barbarians CC are extremely proud that our cricket club is a thriving village based community club that is open to all. We have a wide variety of membership from our All Stars at 5yrs old to adult playing members in their 60's. We provide cricket for 5 senior teams, 4 junior teams, All Stars and Kwik Cricket which is astonishing for what is a small village club. We take great pride that many of the players playing in our senior teams have come through our junior section. Our Saturday senior teams compete and hold their own in the Derbyshire County Cricket League and our 1st XL regularly play against clubs with

overseas or professional paid players. There is nothing better than beating these teams which I am pleased to say we have done on numerous occasions in recent seasons. However our club like many in the league face a challenging and uncertain future, since lockdown spiralling costs are a huge concern with energy bills, insurance costs, cricket balls and league fees having all risen in recent times. So should anyone or any local business reading this column be in a position to sponsor our community club then we would be delighted to hear from you. In the meantime we will battle on providing junior and senior cricket for the people of Ashover and surrounding districts.

CHAIRMAN, ASHOVER BARBARIANS CC

## DEFIBRILLATORS

Ashover Parish Council has installed six defibrillators at the following locations:-

- \*Outside Uppertown Social Centre
- \*Outside the medical centre in Ashover
- \*In the red kiosk at Alton
- \*In the red kiosk at Littlemoor
- \*On the side of The Miners Arms, Milltown
- \*On the side of The Kelstedge Inn, Kelstedge

**If you need to use a defibrillators remember - In an emergency, Dial 999 and you will be given the code to the cabinet and further instructions.**

If you would like to know more about how the defibrillators work, visit the parish council website and put 'defibrillator in use quick reference guide' into the search box at the top right-hand corner of the homepage or paste the following link into your browser:-

<http://www.ashover-pc.gov.uk/uploads/ipad-sp1-in-use-quick-reference-guide-a4-for-web.pdf>

The above guide is also shown at the back of this booklet. Also, look out for 'First Responder' training events at the Parish Hall.

## DONATIONS/GRANTS

During 2022/23 your Parish Council donated £710.00 as follows:-

- Ashover Parochial Church Council Christmas Event - £25.00
- Ashover Acorns Christmas activity - £25.00
- Ashover Senior Citizens Christmas activity - £50.00
- Ashover Brass Band - £50.00
- Ashover Social Centre lighting - £230.00
- Alton Community Land - £230.00
- Ashover Parochial Church Council May Day Event - £100.00

## EMPLOYEES

Your Parish Council employs two people: Sara Atkinson - Parish Clerk/Responsible Financial Officer/Burial Clerk (23 hours per week) and John Bown – Public Toilet Attendant and Health & Safety Monitor (5 hours per week).

## FOOTPATH AND BRIDLEWAY GROUP

Another year flies by and our small team of ageing volunteers can do less than they once could!

Luckily, the paths have been trodden by more and more people from all over the place, many of whom spend money in local shops or come back to stay in camp or caravan sites, yurts and B & Bs.

All are welcome to join the local walking groups:-

The Thursday night group (meet between Easter and August, 6.30 pm by The Stamp) and the 'all year round' Tuesday morning group (meet 9.30 am by The Stamp) are hugely important in keeping paths properly alive. Thanks also to horse riders for reporting bridleway problems directly to Derbyshire County Council and for informing others via the Matlock and District Bridleways Access Group (MADBAG) Facebook page.

Most of the local landowners have worked hard to keep rights of way clear and unblocked.

Derbyshire County Council Public Rights

of Way now contact owners of land to sort out problems on the network as repairs, including gates and stiles, are owners' responsibility whilst the surface of a path is the County Council's responsibility. Sometimes there are disputes over the exact legal route of paths but most paths are now where they should be. DCC has the legal and financial clout to step in when things get complicated.

**DCC PRoW Maintenance** – In total just over £1M was to be spent on improving PRoW throughout Derbyshire in the last financial year with resurfacing of paths a priority along with more than 1,300 signposts being erected. This includes many paths in our parish such as the recently confirmed bridleways on Back Lane and Greenend, Overton. Long awaited repairs to rectify erosion on Salter Lane bridleway (below the Poets Inn) were completed early last year by DCC's PRoW Structures Team only to be washed out by a severe rain storm in October! This path, along with the erosion issues on Vernon Lane bridleway, Kelstedge and to the ramp of the packhorse bridge, Abrahams Lane, are awaiting action later this year. Severe weather events causing erosion to paths and obstructions by falling trees/branches, are unfortunately likely to increase as a result of climate change. This all adds up to put pressure on councils and their tightly constrained budgets.

**DCC Countryside Sites** – The three areas of Highoredish, The Fabric and Eddlestow Lot, have taken much of the volunteers' time. Man power has been needed to assist with environmental work to control bracken, remove invasive tree growth and to provide an appropriate habitat to encourage ground nesting bees.

Work on a crumbling dry stone wall on the Fabric boundary has also been steadily rebuilt by skilled volunteers. Loads of encouragement and gratitude are great motivators!

**Our Paths need YOU!** - If you love exploring our beautiful parish either as a walker, cyclist or horse rider, please do

consider joining the Ashover Footpath & Bridleway Committee which was formed in 2005 in order to protect, improve and increase the rights of way in the largest parish in Derbyshire. The Committee only usually meets a few times a year to discuss various issues, liaising with the Parish Council and DCC PRoW officers, but is in need of new members to help safeguard its future.

If you would like to know more, please contact either:

Richard Felton – 01246 590 786

Karen Haywood – 01246 590 145

(Karen also volunteers with the British Horse Society as the Access and Bridleways Officer for North Derbyshire).

### GRIT BINS

Your Parish Council owns and fills a total of 37 grit bins sited around the parish and undertakes winter maintenance of the Milken Lane Car Park.

**The salt is supplied for use on the highway adjacent the bin and if you witness large amounts being taken for personal use, please contact the Police.**

### GROUNDS MAINTENANCE

The maintenance contract with North East Derbyshire District Council continues and includes maintenance of the playing field, borders surrounding the car park, play area and tennis courts, statutory monthly and annual safety inspections. Pitch bookings administration continues to be undertaken by NEDDC. Your Parish Council approved a further 5 year contract with NEDDC commencing in April 2021.

### HARD COURTS

The hard courts, adjacent Milken Lane Car Park, have been cleaned, sealed and repainted. They are available for booking at certain times by a club or organisation affiliated to a league at a cost of £5.00 per hour and Floodlight cards are available at £3.00 per card/hour.

Clubs and Organisations may book at the

following times:-

- Tuesday - 4pm onwards
- Wednesday - 6pm onwards
- Friday - 6pm onwards
- Sat/Sun - 1pm to 6pm

(The above times change over the winter period, when Club/Organisation bookings may commence at 4pm each evening.) At all other times and when the courts are not booked, municipal tennis may be played for free.

### HIGH ASHES RURAL PROJECT (HARP)



High Ashes Rural Project (HARP) was established in 2014.

The HARP Community Garden has been operating for 18 months now and is looking for some new pairs of hands. If you fancy joining, without obligation, an established friendly voluntary group who meet most Mondays at High Ashes just come up around 10.00. No gardening experience is required. It's free and open to all: you don't even need to be local. You will enjoy good company, with cuppa & sticky bun (on a good week!) It's a 'Green Gym' and you get to eat what you grow: how about that for a great feel-good factor!

Contact Penny on  
0785 220 9639 or  
[pennyfishboard@yahoo.co.uk](mailto:pennyfishboard@yahoo.co.uk)

### LITTER PROBLEM ON COUNTRY ROADS

Littering is a nationwide problem and 20 years of poster campaigns, TV adverts and voluntary agreements have had little effect on littering behaviour. Some of the problems caused by littering are:

- Damage to vehicle tyres.
- Harm to wildlife, farm animals and pets – the RSPCA receive on average 7,000 calls a

- year in relation to animals injured by litter.
- Drain blockages.
- Rat infestation.

In towns and cities the council is obliged to clear problem areas of litter but in rural areas councils don't have the resources to clear miles of country roads – research has shown that one mile of road can contain 147 items of litter. Where communities have taken the initiative and formed groups of volunteer litter pickers 'adopting' a section of road each to keep clear, this has had a big impact on reducing littering and gives the volunteers a real sense of purpose. Please take a look at the CPRE and Keep Britain Tidy websites:

<https://www.cpre.org.uk/>  
<https://www.keepbritaintidy.org/>

### KEEP ASHOVER PARISH TIDY!



**LITTERPICKERS ARE AVAILABLE FOR VOLUNTEERS TO BORROW TO HELP KEEP THE PARISH TIDY!!**

**These have been purchased by Ashover Parish Council for use at your own risk.**

**Litterpickers are available by arrangement on weekdays by telephoning 07752 922593. Please dispose of all rubbish collected responsibly and if you need help, please contact the Parish Clerk.**

### LOCAL COUNCIL AWARD SCHEME

Ashover Parish Council has received re-accreditation at 'Quality' level, a prestigious award, as part of the Local Council Award Scheme. This achievement recognises that the council achieves good practice in



governance, community engagement and council improvement. Moreover, Ashover Parish Council goes above and beyond their legal obligations, leading their communities and continuously seeking opportunities to improve and develop even further. The Award Scheme report highlighted the council's particular areas of strength, stating: "...you are leading your community and continuously seeking opportunities to improve and develop even further. Therefore the council is to be congratulated immensely."

The Local Council Award Scheme is a peer assessed programme that has been designed to both provide the tools and encouragement to those councils at the beginning of their improvement journeys, as well as promoting and recognising councils that are at the cutting edge of the sector. It is through the sector working together to share best practice, drive up standards and supporting those who are committed to improving their offer to their communities that individual councils and the sector as a whole will reach its full potential.

In terms of the future, the council is now reviewing ways in which it can keep on improving its offer to the local community and welcomes input from local people and partners on this. Ashover Parish Council and other local councils like it, are at the front line of the government's localism agenda and are doing as much as they can to deliver services whilst being efficient and cost effective.

## NEIGHBOURHOOD PLANS

The development of the Ashover Neighbourhood plan began as a result of a public meeting in late 2014 and was progressed with the help of a steering group of Parish Councillors and volunteer members of the community. Following a number of queries from various organisations including among others, the District Council, Natural England and the Environment Agency, the plan was submitted to the District Council

for approval. After examination by a public examiner, appointed by North East Derbyshire District Council, the Neighbourhood Plan became a 'Made' document and was added into the number of considerations which the District Council uses in its planning process. The Neighbourhood Plan has been used by both the Parish Council, The District Council, members of the general public, planning consultants and planning appeals inspectors, all who have looked for evidence within the document to either support or contest a planning application. In 2021 a local resident queried the content of a green space within the Neighbourhood Plan and the Parish Council began the process of amending the content of the document to reflect the request from the resident. The process of amending the Neighbourhood Plan is now almost complete. It has had approval from the District Council's nominated independent examiner along with approval from the District Council. We are now just in the process of amending the text in the document to reflect those changes which should be available within the next few weeks.

[https://www.ashover-pc.gov.uk/uploads/ashover-neighbourhood-plan-referendum-version---incorporating-examiners-recommendations-final-version-pdf-\(3\).pdf](https://www.ashover-pc.gov.uk/uploads/ashover-neighbourhood-plan-referendum-version---incorporating-examiners-recommendations-final-version-pdf-(3).pdf)

*Cllr Richard Fidler*

CHAIRMAN, ASHOVER NEIGHBOURHOOD  
PLAN STEERING GROUP

## NEDDC LOCAL PLAN 2014-2034

The North East Derbyshire District Council's Local Plan 2014-2034 has now been adopted. For further information, please visit the NEDDC website at: <https://www.ne-derbyshire.gov.uk/planning-and-local-plan/planning-policy-and-local-plan/development-plan>

## NEWSLETTERS

Your Parish Council issues four Newsletters per year, the first of which is the

Annual Report of the Parish Council which is circulated to every household in the parish and published on the website. The other three Newsletters may be found on the website at [www.ashover-pc.gov.uk](http://www.ashover-pc.gov.uk). If you would like to be included on the mailing list for the newsletter, please let the Parish Clerk know.

You'll find that Ashover Parish Council's website ([www.ashover-pc.gov.uk](http://www.ashover-pc.gov.uk)) is pretty much an information hub for what's going on around the parish. Apart from formal content such as information about the Council, its meetings and Minutes, Planning (including the Neighbourhood Plan). It's through the News section that you'll see bulletins from Derbyshire County Council, North East Derbyshire District Council, Derbyshire Police etc.

If you have any suggestions on ways in which we could improve what we offer we'll of course be pleased to receive them.

## OIL BUYING SCHEME

Rural Action Derbyshire (RAD) is a charity set up in 1924 to support rural communities in Derbyshire. One of their current projects is running a community bulk oil buying scheme.

Oil prices are extremely low at the moment which is good news for oil users. RAD can make cheap oil even cheaper through this bulk buying scheme.

The scheme is open to anyone using Kerosene28 for their heating – households, businesses or community buildings.

There is NO registration or annual membership fee. The scheme is run online where members can register, order and pay for their oil. If you are one of the 20% of rural Derbyshire that do not use a computer or have reliable access to the internet then you can manage your account through the Project Manager at RAD.

There is no obligation to buy your oil through the scheme, you can dip in and out of it depending on your needs. RAD will always be able to negotiate a better oil price

than you would be able to arrange with a supplier in the same period due to the quantity they are negotiating with.

RAD orders oil once a month on behalf of their 'members' and negotiate with up to 8 oil suppliers for the best possible price.

For more information on the scheme please contact Project Manager, Emma Simpson on:

01629 592970 / 0845 313 8800  
[oil@ruralactionderbyshire.org.uk](mailto:oil@ruralactionderbyshire.org.uk)  
or visit the RAD website:

[www.ruralactionderbyshire.org.uk/oil](http://www.ruralactionderbyshire.org.uk/oil)

RURAL ACTION DERBYSHIRE  
Town Hall, Matlock, DE4 3NN.  
Charity No: 1061531

## PANTOMIME JANUARY 2023

It was a wonderful, but slightly strange experience to find that Panto was back again, it had seemed a long three years, but at last we were really performing and interacting with wonderful audiences for 3 nights with 'Cinderella'.

Our audiences always give out so much praise, laughter and support to us all, and the cast felt complete. There are many people who help in all sorts of ways other than treading the boards, and we make a great TEAM.

Come September 2023 we shall be starting to rehearse the next Panto which will be 'Aladdin' for January 2024, hope to see you there!!

*Cllr Rosemary Early*

## PARISH APPEARANCE/MAINTENANCE

The flowerbeds adjacent 'The Black Swan' and the public toilets are maintained under contract for the Parish Council. Volunteers continue to pick litter around the parish and fly tipping is reported promptly to the District Council.

## PARISH COUNCILS AND MEETINGS

Parish councils and parish meetings work towards improving community well-being and providing better services at a local level. Their work falls into three main categories:

- representing the local community;
- delivering services to meet local needs; and
- striving to improve quality of life in the community.

Through a range of powers, parish councils provide and maintain a variety of important and visible local services including allotments, bridleways, burial grounds, bus shelters, car parks, commons, community transport schemes, crime reduction measures, footpaths, leisure facilities, local youth projects, open spaces, public lavatories, planning, street cleaning, street lighting, tourism activities, traffic calming measures, village greens and litter bins.

Residents are welcome to attend and speak at Parish Council Meetings under the 'Public' section. Parish Council Meetings are held on the third Tuesday of every month (except August when no meeting is held) in The Sports Pavilion, Milken Lane, Ashover and commence at 7.00pm. Public Speaking is invited for the first fifteen minutes of every meeting, when anyone from the parish may raise any issue with the Parish Council. A copy of the Agenda, together with notification of planning applications, Parish Clerk's Report, Minutes of the previous meeting and other information may be found on the Parish Council website:

[www.ashover-pc.gov.uk](http://www.ashover-pc.gov.uk) and the main notice board on Moor Road. A summary of each meeting is published in 'The Derbyshire Times' "Grassroots" section and is also available on the Parish Council website along with other press releases.

### PARISH COUNCIL SURGERIES

These are presently held at 6.45pm for fifteen minutes prior to most Parish Council Meeting. Parishioners are encouraged to attend and express any concerns they may have on parish issues to a Parish Councillor and the Parish Clerk if they are unable, or do not wish, to attend and speak at the main meeting under 'Public Speaking'.

### PARISH HALL CIO

We would like to thank the local community, our regular hirers and trustees for their continued support over the last year.

Our function rooms have been chosen to hold a wide variety of events and regular classes (some of which you also may like to join yourself!).

Our fortnightly warm hub coffee morning is proving popular with hot sausage rolls and home bakes a big hit. The hall is open every 2nd and 4th Tuesday of the month from 10-12 and everyone is welcome. Access to free WIFI and dog friendly. All profits go to our chosen charity.

The digital training sessions for the over 50's has proved a huge success and is still open to new learners. A great way of picking up new skills and becoming more confident online and with technology.

Fitness classes currently held with us include Yoga with Jenny Meadows, a yoga class with Debbie Neath, Karate with Mike Douglass and Wingerworth Fencing have joined us with some British Champions. Pilates with Liz on Tuesday evenings has literally gone from strength to strength with new members welcome at either of her 2 classes!

A new course with Lynne Pope's Spanish Class are fully underway again with both beginners and intermediate classes. Other regular groups include Produce Club, Indoor bowls, Parish Panto, Ashover Seniors, Ashover Art Group, Ashover Brass Band and Young Farmers. Wednesday morning's host 'Tots & Tinies playgroup' where parents and carers have a well-deserved cup of tea whilst the children have a wide variety of toys, organised activities and songs to keep them busy! Now ran by Angela, the group is expanding. For the older children - Ashover Brownies now meet weekly at 6pm (term time) in our Amber Hall, followed by Guides & occasionally Rangers at 7pm.

For those with a creative flair, Jonathan Moseley who is one of the UK's leading designers in the floral art world has many classes and workshops booked through the year.

All groups are open to new members and support.

We would be happy to provide you with further information on any of these existing groups, as well as offering advice and assistance with marketing should you wish to start a new class yourself.

Please take a look at our website [www.ashoverparishhall.com](http://www.ashoverparishhall.com) or social media pages ([Facebook](#) & [Instagram](#)) which provides information on hiring the hall and photos for inspiration with your own event.

We have as always had the pleasure of hosting many wonderful weddings, birthday, life and anniversary celebrations.

For 2023 the hall has chosen to support Helen's Trust and will hold more charity events in the coming months.

2023 sees the hall hosting a Fashion show, Coronation celebrations, artefact event, a great Christmas fair and other social events... please keep a look out on our website, social media and notice boards.

We are always looking for new trustees, so if you are interested please call in and find out what its all about.

If you would like our help to create the perfect event or celebration, please get in touch:

Tel: 01246 590005

Email: [info@ashoverparishhall.com](mailto:info@ashoverparishhall.com)

Website: [www.ashoverparishhall.com](http://www.ashoverparishhall.com)

*Manager*

ASHOVER PARISH HALL EVENTS CENTRE

### PAROCHIAL CHURCH COUNCIL

We, at All Saints Church, are grateful for another year of being involved in the work of the kingdom of God in our wonderful parish, serving others in different ways.

Life at church has seen Peter Bold complete his first full year with us as Rector and we are grateful for his leadership, encouragement, enthusiasm and teambuilding. Peter and Candy have settled well at Ashover, feeling very much at home amongst us. Candy has joined the leadership team for the children's work. Peter's ministry here is on a part-time basis and besides Ashover, he

oversees the churches at Brackenfield, Wessington and Handley. One significant change, directed by the diocese, took place during in October 2022 which means that Ashover and Handley Churches are now one parish rather than two separate parishes. For many years Handley was legally part of the North Wingfield Team Ministry, whilst practically belonging to the Amber Churches. One condition for their official transfer to take place was that a joint parish be created. Part of our future life together, not just with Handley but also with Brackenfield and Wessington, is to aim for a closer working relationship to be stronger together.

We ran an Alpha course in the Bassett Rooms during autumn 2022. Alpha is a means whereby enquirers can explore different aspects of the Christian faith in a non-pressurised, relaxed, informal and fun way. A video is watched at each session followed by group discussion where any questions can be asked! All this is interspersed with refreshments. Look out for further Alpha courses being advertised. Come along and try one or two sessions!

Other aspects of our church life include All-Age Worship once a month, Morning Praise occasionally, as well as the Communion Services. The children's work is very much alive with Allsorts on Sunday mornings, Acorns on alternate Thursday mornings, SmARTies occasionally and the after-school craft club on Friday afternoons during term time in the Bassett Rooms, which is a bridge-building exercise between church and community. Growing numbers are being seen at choir and Knit n' Natter. Also very popular are the Film Club and the Coffee Shop. The Home Group (for Bible Study and fellowship) and Sunday @ 6 on the 2nd Sunday of each month (for prayer) continue to meet. We were pleased that the Parish Party and Pantomime resumed in 2023.

On Easter Sunday 2022 Rev Jenn Willis took her final service at Ashover, as part of the ministry team at Ashover for a few years.

We have been grateful for Jenn's time with us.

In April 2022 we appointed Sarah Evans as church administrator.

Sarah can be contacted on  
07810656541 or  
ashoverallsaints@gmail.com

The Amber Churches website ([www.amberchurches.org](http://www.amberchurches.org)) continues to provide information, news and a calendar of upcoming events. We also produce a monthly newsheet, Amber News, which is available free of charge at the village shops as well as being accessible on the Amber Churches website.

PAROCHIAL CHURCH COUNCIL  
ALL SAINTS CHURCH, ASHOVER  
Registered Charity Number 1174119

## PLANNING

Your Parish Council is one of several consultees whose comments are sought by the District Council on planning applications. Unless applications are received after agenda issue, those to be considered by the Parish Council are listed on Appendix I which is published with the agenda and posted on the main notice board and on the website. Applicants are encouraged to address the Parish Council, either in person or in writing, when their application is to be considered. Details of all applications, including associated documents, may be found on the District Council's website at [www.ne-derbyshire.gov.uk](http://www.ne-derbyshire.gov.uk)

## PLAYGROUND – OPENING

After the disruption caused by the Pandemic, we thought it would be a great idea to combine the delayed, formal opening of the playground with our Jubilee celebrations! Next, we had to decide what the event might look like and rather than going for a traditional plaque we opted for another idea.

In the early stages of the playground project, we had some great design suggestions fed through to us by Ashover Primary School and through social media and in turn we shared these with the specialist

companies who expressed an interest in taking on the contract. Given the success of this we decided we would again ask local children for their input and the way we did this was to invite contributions for a mural. This initiative was led by local, talented artist, Lily Hammond and she received around 200 drawings and images which she captured on the mural. We think you'll agree the end result looks fantastic!



*Left: Lily and retired Town Crier, Merrick, unveiling the mural and formally declaring the playground open.*

## POTHoles, PAVEMENTS & OTHER PROBLEMS

Derbyshire County Council has a facility for reporting problems with potholes, pavements, flooding, gritting, street furniture etc. Visit the DCC homepage at [www.derbyshire.gov.uk](http://www.derbyshire.gov.uk) and click on 'report a road fault' etc. then follow the links to the online fault reporting form. After entering details, including an opportunity to upload a photo of the problem, you will be given a reference number, enabling you to keep track of action taken by DCC.

## PUBLIC SPACE PROTECTION ORDER (PSPO)

Dog mess is unfortunately an unpleasant aspect of dog ownership. It is every owner's duty to clean up after their dog – there is no excuse for leaving it behind. North East Derbyshire District Council is committed to ensuring that dog owner's act in a responsible way. Enforcement of the PSPO was delayed due to the coronavirus pandemic. As well as

introducing a number of new offences relating to dog control, the fine for failing to clear dog mess will be increased to £100.

Residents should be encouraged to report breaches of the PSPO to the council via telephone to 01246 231111 or email to [environmentalhealthadmin@ne-derbyshire.gov.uk](mailto:environmentalhealthadmin@ne-derbyshire.gov.uk)

and the dog wardens will investigate, issuing fines if necessary.

For more information on PSPO's etc. visit <https://www.ne-derbyshire.gov.uk/environmental-health/animals-and-pests/dog-management-pspo>

Ashover Parish Council has provided 13 dogs bins sited around the parish and these are located as follows:-

ASHOVER – Moor Road, Church Street, Narrowleys Lane, Crompton Lane, Dovecotes entrance to field, Cricket Pavilion, Milken Lane car park, The Fabrick (2), Cemetery.

OVERTON – near right of way.

KELSTEDGE – Westedge Close.

LITTLEMOOR – adjacent bus shelter.

## REMEMBRANCE SUNDAY – 13 NOVEMBER 2022



Dr Peter Bold when the Choir sang and Ashover Brass Band played.

Ashover Parish Council displayed poppies around the parish to mark the Remembrance. On the 11 November 2022 19 people met at the memorial for the crashed Blenheim bomber off an Ashover footpath at Highashes to mark Armistice Day and remembered the three killed in 1943.

Four years ago, at the centenary marking the end of WW1, Ashover Tree Group was encouraged by the Parish Council to come up with a fitting tribute to commemorate those who lost their lives in the 1914 – 1918 war. In response, the tree group planted 3 beech trees in separate locations overlooking the village. This 'Centenary Triangle' of trees is located in Milltown (Holestone), Uppertown (Wirestone Lane) and just outside the Fabric boundary. Our recently taken picture shows one of the trees which is flourishing in its Fabric location.



November 2018

November 2022

## RIGHTS OF WAY

These are ultimately controlled and maintained by Derbyshire County Council. The Parish Council undertakes minor works via its Minor Maintenance Agreement (MMA) with DCC. If you wish to report any issues relating to rights of way there is an online facility at [www.derbyshire.gov.uk/prow](http://www.derbyshire.gov.uk/prow) Furthermore, you can view the entire rights of way network by visiting the Council's website and searching for 'Mapping Portal' where visitors can view a wealth of information, including Rights of Way. Information relating to Modification Orders may be viewed here:

<https://apps.derbyshire.gov.uk/applications/right-of-way/>

During 2022/2023 your Parish Council used its total Minor Maintenance budget of £675 on minor maintenance to rights of way around the parish (path nos. 45, 150, 156, 67, 68, 140, 153, 19 and 44).

## RIVER AMBER

If you witness any pollution of the river, please report this **immediately** to:-  
0800 807060 - 24 hours a day  
<https://www.gov.uk/report-an-environmental-incident>

Following the Public Meeting held in September 2022 and a site visit in November 2022, Lee Rowley MP has been liaising with Severn Trent and the Environment Agency on water quality. A lengthy and technical response was received, in February 2023, to questions posed by the MPs office and a copy of this is available on request from the Parish Clerk. The MP concluded "I think the two key points are that Severn Trent are unlikely to provide a plan for their RNAG (Reasons for Not Achieving Good Status) for some time yet (but are committed to doing so) and the EA's sampling should begin at some point soon (date TBC)."

In June we received a further update from Lee Rowley. His progress report from Severn Trent confirmed that in February they had installed monitoring equipment at Ashover Sewage Treatment Works and Kelstedge Sewage Treatment Works on the River Amber to investigate potential sources of pollution. By the end of April, the collected data has not recorded any differences in water quality comparing upstream to downstream at either site. Any issues with water quality appear to have their origin upstream of Kelstedge Sewage Treatment Works so monitoring equipment has been moved upstream to detect any occurrence of pollution and help to identify the potential source.

Clearly, it will take some time to obtain a clear understanding of the contributory causes of the pollution. Ashover Parish Council will continue to pursue this issue with the MP's office, Severn Trent and the Environment Agency and provide further updates when available.

## SCAMS AND CYBER SECURITY



Derbyshire Police has issued the following advice on how to better protect yourself against unwanted calls:-

- Be sceptical
- Take your time
- Know who you are dealing with
- Protect your financial information

If you want assistance in finding out if it is a scam contact Consumer Direct on 08454 04 05 06.

If you want to cut the junk contact:-  
Mailings - 0845 703 4599 or [www.mpsonline.org.uk](http://www.mpsonline.org.uk) (Registration is free)  
Telephone Calls - 0845 070 0707 or [www.tpsonline.org.uk](http://www.tpsonline.org.uk) (Registration is free).  
You can also contact your telephone company to block callers who withhold their number.  
Text/SMS - 0845 070 0707 or [www.tpsonline.org.uk](http://www.tpsonline.org.uk) . If you then receive a message you don't want you can reply with the word STOP.  
Email - if you would like advice go to [www.getsafeonline.org](http://www.getsafeonline.org)

## SPEED AWARENESS

In 2014, eleven parish councils in the North East Derbyshire area clubbed together to provide a speed camera for police to use in a joint bid to make local roads safer. Ashover, Brampton, Heath and Holmewood, Morton, North Wingfield, Pilsley, Shirland and Higham, Stretton, Sutton cum Duckmanton, Tupton and Wingerworth parish councils have all contributed to the campaign and provided funding for the camera and its maintenance. The camera is deployed, on average, once a week in one of the partnership parishes. Police Officers using the device informed councils that it is an excellent tool in tackling the issues of speeding in our areas. To contact your local Safer Neighbourhood policing team: call 101 or visit [www.derbyshire.police.uk](http://www.derbyshire.police.uk)

## SPEED AWARENESS - 12 MONTH TRIAL OF SPEED INDICATOR DEVICE'S (SIDS)

Ashover Parish Council has listened to residents' concerns and share everyone's frustration that little has been done to resolve the ongoing issue of speeding on the A632 and there are many opinions around what Derbyshire County Council (DCC) should be doing about this issue.

We have been told on many occasions that DCC only has a certain amount of money to spend in a large area and therefore will only work on data from the Police, and that data doesn't seem to be getting through, for one reason or another.

There is currently a county wide trial of Speed Indicator Devices and DCC has offered us the opportunity to be part of that trial. Whilst there is currently little evidence that these devices, on their own, are an effective solution, it would provide us with the evidence of excessive speed through Kelstedge that would be necessary to move to additional measures being introduced. We asked the Principal Engineer Traffic & Safety from DCC, at the public meeting held at the Basset Rooms on Friday 23rd September, the direct question that if we install the SID's, will the data we gather be taken into account and he confirmed it would.

As part of the trial, grant funding would be available from the Police & Crime Commissioner towards the installation of SIDs and the Parish Council would be required to match the grant funding. This is the first time our Parish Council has had an opportunity like this. We complain about the traffic tirelessly on behalf of the parishioners, but ultimately as in so many other scenarios, we are in the hands of the highway authority, this time we are able to take a little bit of control. Whilst we will have to bare some of the cost, we hope, as a Parish Council, it demonstrates our commitment to the local community.

The Parish Council agreed to go ahead with the purchase and installation of two SIDs,

situated in Kelstedge for a 12 month trial subject to the funding and the application for a highway licence being granted. We are nearly there and very soon we hope our parish will see two SID's situated at Kelstedge on the A632, one facing vehicles coming from Chesterfield and One facing vehicles coming from Slack Hill. This will enable us to obtain data on vehicles travelling in both directions and whilst we hope to have some reduction in speed through the residential area, we also hope to be able to demonstrate the need for additional measures to reduce speeds on the A632 and provide a safer environment for all our residents.

Commenting on safety along the A632, Derbyshire County Councillor Barry Lewis commented in recent correspondence:-  
"Further, I made a formal request that due consideration be given to a wider average speed camera scheme for the A632; as I have noticed, as others in the Ashover Parish clearly have, that whilst the 50mph signage scheme has had some impact on speeds it does not stop those that speed at the extreme end of the spectrum. And also that many who try to adhere to the new limit find themselves creeping over the limit quite quickly."

The Derbyshire County Council's Highways Officer responded to this:-  
"On the subject of speed management along this route, the County Council has very recently invested nearly £70k in amending the speed limits between Matlock and Walton. This scheme was only completed in mid-February and we are currently gathering some post-implementation speed data. Obviously, having made such an investment, we will be closely monitoring the collision statistics over the coming years and further intervention measures would only be considered if there is an on-going evidenced need. The hope is that the various intervention measures already deployed on

the A632 continue to reduce the collisions on this route. Bearing this in mind, there are no current proposals to consider further interventions until the existing measures can be properly assessed (usually a minimum of 3 years).”

For further information regarding speed enforcement in Derbyshire please visit the CREST website: [www.crestderbyshire.org](http://www.crestderbyshire.org)

### STREET FURNITURE/PROPERTY

A rolling programme continues to operate for the maintenance of parish owned street furniture, including parish seats, bus shelters and notice boards and parish owned property. Risk assessments and inspections have been undertaken in accordance with legal requirements.

### SUBSCRIPTIONS

Your Parish Council continues to subscribe to the Derbyshire Association of Local Councils (DALC) and the Institute of Cemetery & Crematorium Management (ICCM) on an annual basis. DALC offers free legal and professional advice on all aspects of parish and town council business backed up by experts at NALC (National Association of Local Councils) and regular information circulars. Likewise ICCM also offers free advice to its members and regular newsletters.

### TENNIS CLUB

Ashover Tennis Club meets on Friday evenings from April to October for social tennis, and also runs teams in the Derby and District league. We are always looking for new players - all standards welcome. For further details please contact the Membership Secretary via email:

[elliessalomoni@aol.com](mailto:elliessalomoni@aol.com)

### TREE WARDEN

A number of people have been in contact with me to find out how to source trees for projects they have. There are a variety of

organisations who will give trees, if they meet their criteria.

Derbyshire County Council aims to plant one million trees in Derbyshire by 2030 and need somewhere to plant them! So far they are supplying ‘Jim’s field’ at Alton and ‘Four Winds Farm’ with a variety of trees and hedging and seem happy to support big projects. If you are interested in this as a volunteer or landowner wanting trees to plant,

email [milliontrees@derbyshire.gov.uk](mailto:milliontrees@derbyshire.gov.uk)  
or contact me, Linda Stephenson, on  
[07757691834](tel:07757691834)

There have been a few applications for pruning and felling of trees covered by Tree Preservation Orders in the parish. North East Derbyshire District Council have at last appointed a tree officer, which should clarify the process for all concerned.

If anyone is interested in becoming involved in my tree warden work, I would be very happy to work with them The tree group continues to operate and we have been working with the climate change group looking at wildlife corridors. We would welcome anyone to be involved in our discussions and projects.

*Linda Stephenson*

ASHOVER PARISH TREE WARDEN

### TRUSTED TRADER SCHEME (Derbyshire County Council)

Finding a company that you can trust to do some work for you can be a bit daunting – how can you be sure that you won’t get ripped off? What if things go wrong? How do you choose between lots of different companies? These sorts of dilemmas were a driving force behind the setting up by Derbyshire County Council of the Trusted Trader scheme to help local people find traders and businesses that do a good job at a fair price and provide good customer service.

That was back in 2008 and the popular scheme has gone from strength to strength. These days there are nearly 17,000 searches each month on the Trusted Trader website, [www.derbyshire.gov.uk/tt](http://www.derbyshire.gov.uk/tt) by people looking

for reliable companies to use. Another ringing endorsement for the scheme was a recent survey which gathered feedback from more than 16,000 people who had used a Trusted Trader and an impressive 94% said they were very satisfied with the service they received.

So people can have lots of confidence when employing one of the 1,200 traders who are part of the scheme. In the very unlikely event of someone having a problem with one of the traders then help is at hand. Derbyshire County Council trading standards officers can get involved in any queries involving Trusted Traders and seek to resolve them.

The scheme particularly helps to protect older and vulnerable adults by making it easier for them to use Trusted Traders rather than rogue traders who typically cold-call and use high pressure sales techniques. A recent development has been the inclusion of Financial Advisors who specialise in providing financial advice for people in later life and can help with matters like care fees, pensions and investments.

Find out more about all aspects of Trusted Trader at:

[www.derbyshire.gov.uk/tt](http://www.derbyshire.gov.uk/tt)  
or call [01629 536148](tel:01629536148)

Enquiries are also welcome from businesses interested in signing up to the scheme.

### UPPERTOWN SOCIAL CENTRE

The Centre provides a first class facility for social activities for the people of Ashover and surrounding areas. It has comfortable and up to date facilities for parties, birthdays, weddings and other special occasions but is equally suited to conferences, training sessions or meetings.

Facilities include:

- Licensed bar
- Fully fitted kitchen for outside caterer or hirer use
- Function room for up to 120 people
- Car parking for 25 cars (this area can be used to erect a marquee)

The Centre is run on a not for profit basis as a charity, which would not be possible

without the committee of local people and a group of willing volunteers.

For information on events visit:

[www.uppertown.org](http://www.uppertown.org)  
or call [07966 154798](tel:07966154798)

UPPERTOWN SOCIAL CENTRE  
Registered Charity Number: 1023876



### WASTE RECYCLING (Derbyshire County Council)

Household Waste Recycling Centres (or Civic Amenity Sites) are provided by the county council for the disposal of waste produced from households which is either too large or too bulky to be accepted by the normal district council weekly collection. Your nearest site is located at Stonegravels, Sheffield Road, Chesterfield which has full recycling facilities. The site is open seven days a week from 8.30am – 6.00pm (closed 25/26 December and 1 January).

Contact ‘Call Derbyshire’ by:  
calling [01629 533190](tel:01629533190)  
or texting [86555](tel:86555)  
DERBYSHIRE COUNTY COUNCIL

**WEBSITE – [www.ashover-pc.gov.uk](http://www.ashover-pc.gov.uk)**

Your Parish Council’s website is [www.ashover-pc.gov.uk](http://www.ashover-pc.gov.uk) and is the gateway into the parish council and numerous local services, from there you can also find links to other organisations including North East Derbyshire District Council and Derbyshire County Council.

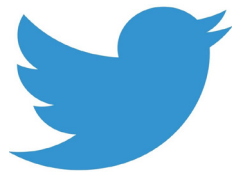
The site contains, along with many other things, items of news, advice of road closures in the parish, links to leisure facilities, you can even have a look at your Parish Councillors and Parish Council staff. There are links to your Local Councillor, District Councillor and Member of Parliament.

There are calendars for council meetings and events and leisure activities taking place in the Parish.

There are forms to report problems and issues within the Parish, there is an A-Z link where there is a whole raft of information about the Parish, County and District Councils.



Why not have a look at it at [www.ashover-pc.gov.uk](http://www.ashover-pc.gov.uk) you can also find us on Facebook and Twitter.



If you’re viewing this on a digital device, just click the above images to be directed straight to the website or social media page!

**FINANCIAL REPORT  
PRECEPT 2023/2024**

At the Parish Council meeting held on 18 October 2022, consideration was given to the recommendations of the Finance Working Group for the precept application for 2023/24.

The Finance Working Group had deliberated each code and cost centre in the accounting system, recognising the need to limit expenditure as far as possible due to current restraints and economic climate and taking into account a realistic income figure. The Capital Assets Renewal Programme continued to be included in the precept sum and this would be revised to reflect ongoing capital expenditure and to include new capital purchases. Members recognised the requirement to retain 35-50% precept reserves at all times, whilst being aware of access to earmarked reserves. Additionally, it was anticipated that, due to a potential increase in dwellings and proposed growth, any increase would be spread over more properties and therefore should have a lesser impact on individual households.

Having deliberated the budget for the Financial Year 2023/2024, an anticipated realistic income figure of £12,765.00 set against an anticipated expenditure figure of £90,325.00 plus earmarked reserves of £12,195.00, produced an annual Precept figure for 2023/2024 of £89,755.00. This represents no increase to the Parish Council Precept figure for the current year.

COST CENTRE	ANTICIPATED FIGURES			
	Exp. 2022/23	Inc. 2022/23	Exp. 2023/24	Inc. 2023/24
	£	£	£	£
Administration	37087	2575	38295	2095
Section 137	600	0	750	0
Pavilion/Courts	6050	840	275	550
Public Toilets	2480	0	2680	0
Capital Projects (EMR)	12183	0	12195	0
Allotments	300	60	300	120
Cemetery	12400	12000	15450	10000
Parish Maintenance	34130	0	32575	0
TOTALS	105230	15475	102520	12765
PRECEPT	<b>2022/23</b>	<b>£89755</b>	<b>2023/24</b>	<b>£89755</b>

## Summary Receipts & Payments Year Ended 31 March 2023

(Awaiting External Audit)

Year Ended 31 March 2022		Year Ended 31 March 2023
<b>Receipts</b>		
83368.00	Precept Received	89755.00
33.59	Interest Received	612.17
<b>83402.59</b>	<b>Total</b>	<b>90367.17</b>
<b>Operating Income</b>		
89312.34	Administration	102003.71
1648.65	Pavilion	1562.95
60.00	Allotments	60.00
11915.00	Cemetery	16720.00
24381.53	VAT	12100.96
<b>127317.52</b>	<b>Total Receipts</b>	<b>132447.62</b>
<b>Running Costs</b>		
35401.01	Administration	32608.34
235.00	Section 137	610.00
0.00	Other Grants	100.00
2143.33	Pavilion	304.79
2769.05	Toilets	3917.54
22022.67	Capital Projects	12570.08
306.62	Allotments	262.48
11550.36	Cemetery	14587.68
30490.94	Parish Upkeep	36265.45
12983.49	VAT on Payments	11568.80
<b>117902.47</b>	<b>Total Payments</b>	<b>112795.16</b>

## Summary Receipts & Payments Year Ended 31 March 2023

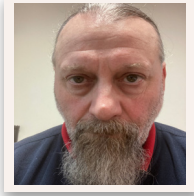
(Awaiting External Audit)

Year Ended 31 March 2022		Year Ended 31 March 2023
<b>Receipts &amp; Payments Summary</b>		
<b>125007.01</b>	<b>Opening Balance</b>	<b>134422.06</b>
127317.52	Add Total Receipts	132447.62
252324.53		266869.68
117902.47	Less Total Payments	112795.16
<b>134422.06</b>	<b>Closing Balance</b>	<b>154074.52</b>
<b>Cumulative Funds represented by:</b>		
28184.11	Current/Reserve Account	47737.70
106237.95	National Savings Account	106336.82
<b>134422.06</b>		<b>154074.52</b>

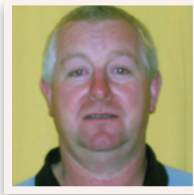
## YOUR PARISH COUNCILLORS



John Cook  
Farhill House  
Milken Lane  
Ashover  
CHESTERFIELD  
S45 0BB  
07803 230702



Jim Daykin  
Eastwood Cottage  
Ashover Road  
Littlemoor  
CHESTERFIELD  
S45 0BL  
07791 340214



Steve Dronfield  
Willow Tree Farm  
Hungerhill Lane  
Stonedge  
CHESTERFIELD  
S45 0LP  
01246 590721



Rosemary Early  
Lexley Gables  
Hockley Lane  
Ashover  
CHESTERFIELD  
S45 0ER  
01246 590738



Richard Fidler  
Porthlea  
Alton Lane  
Littlemoor  
Ashover  
CHESTERFIELD  
S45 0BE  
01246 590155



Lucy Hunter-Bott  
Marshbrook  
Butts Road  
Ashover  
CHESTERFIELD  
S45 0HW  
07976 733607



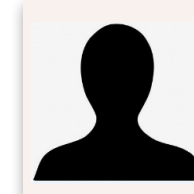
Chris Miller  
Hill House  
Hill Road  
Ashover  
CHESTERFIELD  
S45 0BX  
01246 590253



Mike Thomas  
Touchstone  
Chapel Hill  
Ashover  
CHESTERFIELD  
S45 0AT  
07885 201296

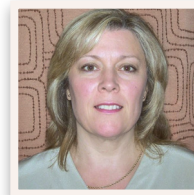


Ed Willmot  
The Pines  
Hill Top Road  
Ashover  
CHESTERFIELD  
S45 0BZ  
01246 590260



Co-Option Vacancy  
- filled July 2023

## YOUR PARISH COUNCIL STAFF



Sara Atkinson  
Parish Clerk & RFO  
The Sports Pavilion  
Milken Lane  
Ashover  
Chesterfield S45 0BA  
01246 863018  
[parishclerk@ashover-pc.gov.uk](mailto:parishclerk@ashover-pc.gov.uk)



John Bown  
Health & Safety  
Monitor/  
Toilet Attendant

## YOUR COUNTY AND DISTRICT COUNCILLORS



Barry Lewis  
DCC Councillor  
2 King George Street  
Wessington  
Derbyshire  
S55 6DZ  
01773 830871  
07920484207



Helen Weatherall  
NEDDC Councillor  
Woodside  
Ashover Road  
Ashover  
CHESTERFIELD  
S45 0EU  
07429 365009



For information and help on the following services, please call the appropriate authority (details at the right of this page) or visit [www.ashover-pc.gov.uk](http://www.ashover-pc.gov.uk) and click on the A-Z of services :-

Bulk Waste Collection Service	<b>NEDDC</b>
Bus Shelters	<b>APC</b>
Car Park (Milken Lane)	<b>APC</b>
Cemetery (Ashover)	<b>APC</b>
Council Tax	<b>NEDDC</b>
Common Land	<b>APC</b>
Dog Waste Bins	<b>APC</b>
Dog Wardens	<b>NEDDC</b>
Education	<b>DCC</b>
Energy Advice Centre	<b>NEDDC</b>
Environmental Health	<b>NEDDC</b>
Fly Tipping	<b>NEDDC</b>
Grit Bins	<b>APC/DCC</b>
Highways	<b>DCC</b>
Housing	<b>NEDDC</b>
Libraries	<b>DCC</b>
Licensing	<b>NEDDC</b>
Parish Plan (Ashover parish)	<b>APC</b>
Parish Seats	<b>APC</b>
Pest Control	<b>NEDDC</b>
Planning Permission	<b>NEDDC</b>
Play Area (Ashover)	<b>APC</b>
Playing Field/Hard Courts (Ashover)	<b>APC</b>
Potholes	<b>DCC</b>
Public Toilets	<b>APC</b>
Recycling (inc. blue box/bag scheme)	<b>NEDDC</b>
Refuse Collection	<b>NEDDC</b>
Reg. of Births, Deaths, Marriages	<b>DCC</b>
Register of Electors	<b>NEDDC</b>
Rights of Way (footpaths/bridleways)	<b>DCC</b>
Social Services	<b>DCC</b>
Street Cleaning	<b>NEDDC</b>

Street Lighting Repairs	<b>DCC</b>
Trading Standards	<b>DCC</b>
War Memorial	<b>APC</b>

#### **NEDDC**

North East Derbyshire District Council  
2013 Mill Lane  
Wingerworth  
Chesterfield  
S42 6NG  
Tel: **01246 231111**

#### **DCC**

Derbyshire County Council  
County Hall  
Matlock  
DE4 3AG  
Tel: **01629 533190**

#### **APC**

Ashover Parish Council  
The Sports Pavilion  
Milken Lane  
Ashover  
Chesterfield  
S45 0BA  
Tel: **01246 863018**

## **EMERGENCY SERVICES**

***Always dial 999 in case of an emergency***

### **Derbyshire Police**

101 (calls to report crime, anti-social behaviour, non-violent crime or general information)

Please note: You **MUST** continue to use **999** where a crime is in progress, for serious crime or where violence is being used.

### **Derbyshire Fire & Rescue**

Administrative and fire safety enquiries:  
**01332 771221**

### **Power and supplies**

Electricity: Central Networks (emergency) **0800 056 8090**

Gas (emergency) **0800 111 999**

Severn Trent Water (emergency)  
**0800 783 4444**  
or **0845 9881188** (flooding)

National Floodline  
**0845 988 1188**

### **Hospitals/medical**

NHS **111** is a service to make it easier for you to access local NHS healthcare services in England. You can call **111** when you need medical help fast but it's not a **999** emergency. NHS **111** is a fast and easy way to get the right help, whatever the time.

NHS **111** is available 24 hours a day, 365 days a year. Calls are free from landlines and mobile phones.

Royal Derby Hospital  
**01332 340131** - Main switchboard

Chesterfield Royal Hospital  
**01246 277271**

Buxton Hospital  
**01298 214000**

## **INFORMATION AND HELP**

[Derbyshire County Council](#)

**01629 533190**

[North East Derbyshire District Council](#)

**01246 231111**

[Citizens Advice Bureau Advice line](#)

**03444 111 444**

### **Lee Rowley MP - Parliamentary**

#### **Constituency**

Office of Lee Rowley MP  
Eckington Business Centre  
Market Street  
Eckington  
Derbyshire  
S21 4JH  
Tel: **01246 439222**  
Email: [lee.rowley.mp@parliament.uk](mailto:lee.rowley.mp@parliament.uk)

#### **Social media**

 [Twitter:@lee4ned](https://twitter.com/lee4ned)





Ashover  
Community First

© Ashover Parish Council  
July 2023

---