



ISSUE no.1  
2024/2025

Ashover  
Community First

# Ashover Parish Council Annual Report 2023/2024



LOCAL COUNCIL  
AWARD SCHEME  
QUALITY

Working for the whole of the Ashover Parish  
Website: [www.ashover-pc.gov.uk](http://www.ashover-pc.gov.uk)



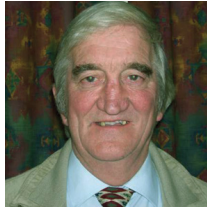
## CONTENTS

|                                 |    |  |    |
|---------------------------------|----|--|----|
| CHAIRMAN'S REPORT               | 4  | Parish Council Surgeries   | 19 |
| Allotments                      | 6  | Parish Hall CIO  | 19 |
| Alton Nature Reserve            | 6  | Planning   | 20 |
| Ashover Charities               | 6  | Potholes, Pavements etc  | 21 |
| Ashover Medical Centre (Trust)  | 6  | Public Space Protection Order  | 21 |
| AMC - Recruitment               | 7  | Remembrance Sunday   | 21 |
| Ashover Medical Centre          | 7  | Rights of Way  | 21 |
| Ashover Show 2024               | 8  | River Amber  | 21 |
| Book Exchange                   | 8  | Scams and Cyber Security   | 22 |
| Brass Band                      | 8  | Speed Awareness  | 23 |
| Cemetery                        | 8  | Speed Awareness SID Trial  | 23 |
| Cemetery Memorial Safety        | 9  | Street Furniture/Property  | 23 |
| Christmas Tree Lights 2023      | 9  | Subscriptions  | 23 |
| Climate Change & Biodiversity   | 10 | Tennis Club  | 24 |
| Community Car Scheme            | 11 | Trusted Trader Scheme  | 24 |
| Communication                   | 11 | Uppertown Social Centre  | 24 |
| County/District Council Liaison | 11 | Waste Recycling: DCC   | 25 |
| Cricket Club                    | 11 | Women's Institute  | 25 |
| Defibrillators                  | 11 | Website – <a href="http://www.ashover-pc.gov.uk">www.ashover-pc.gov.uk</a> | 26 |
| Dog waste disposal              | 12 | Ashover Parish Councillors   | 30 |
| Donations/Grants                | 12 | INFORMATION AND HELP   | 32 |
| Employees                       | 12 | Louise Jones MP - NED  | 33 |
| Footpaths and Bridleways Group  | 12 |  |    |
| Grit Bins                       | 14 |  |    |
| Grounds Maintenance             | 15 |  |    |
| Hard Courts                     | 15 |  |    |
| High Ashes Project (HARP)       | 15 |  |    |
| Litter Problem                  | 15 |  |    |
| Litter Poster Competition 2024  | 16 |  |    |
| Local Council Award Scheme      | 16 |  |    |
| Neighbourhood Plan              | 17 |  |    |
| NEDDC Councillor                | 17 |  |    |
| NEDDC Local Plan 2014-2034      | 18 |  |    |
| Newsletters                     | 18 |  |    |
| Oil Buying Scheme               | 18 |  |    |
| Pantomime January 2024          | 19 |  |    |
| Parish Appearance/Maintenance   | 19 |  |    |
| Parish Councils and Meetings    | 19 |  |    |

## CHAIRMAN'S REPORT

Dear Residents of Ashover Parish,

I'm writing this report in April 2024 in readiness for the Annual Parish Meeting. This is the completion of the first year of office for your newly elected Parish Council and work has continued with tasks embarked upon by the previous council.



Once again, the very changeable weather has created problems around the parish; areas of flooding have been unusually high and have been brought to the attention of Derbyshire County Council Highways Department, which has endeavoured to address the issues as soon as feasibly possible.

Your Parish Council has, with grant support from the Police and Crime Commissioner, provided speed indicators on the A632 at Kelstedge and data is being collected and analysed at regular intervals. Water quality in the River Amber is also under scrutiny and both these issues were the subjects of the Public Meeting on 09 May 2024.

Our Climate Change and Biodiversity Working Group works hard on projects to comply with the Environmental Act 2021 and Environment Statement 2023 and is currently investigating various projects.

Following successful negotiations, the total area of the car park is now under Parish Council ownership and this remains a 'free to use' asset for the parish.

An 'Anti-Litter Poster Competition' has been organised with the support of Ashover Primary School pupils to create awareness of litter problems around the parish and beyond and you'll see the winning posters sited around the parish.

I would like to take this opportunity to highlight and thank the army of volunteers, whose efforts make a valuable contribution to the parish. The work covered is very varied, including dry stone walling, footpaths and bridleways, parish events, litter picking, community clubs and venues to name but a few.

CONTINUED ON THE NEXT PAGE...

**Many thanks to all concerned, we owe you all a debt of gratitude for the time and effort freely given.**

As Chairman, I wish to thank Council Members for their hard work, help and support throughout the year and also thanks go to Sara, the Parish Clerk, Financial Officer and Burial Clerk, for her guidance and administrative attention to detail.

Councillor Ed Willmot  
Chairman, Ashover Parish Council

## ALLOTMENTS

The allotments on Marsh Green are owned by the Parish Council and are presently rented by six residents.

## ALTON NATURE RESERVE

Volunteers are always welcome to join in the enjoyable work in the open air to improve the site. Alternatively, you could share your expert knowledge of buttercups, buzzards or butterflies (or other aspects of nature) to help guide us.

Please contact us through the website at: <https://altoncommunityland.wordpress.com/>

## ASHOVER CHARITIES

Since the fifteenth century there has been a Charity Board in Ashover to administer the funds of a number of Charities and to make donations to appropriate individuals. The Charities were mostly set up from bequests made by individuals in their wills with the purpose of helping those in real financial need. The trustees of these Charities continue to make donations and would now like to hear about anyone who lives within Ashover parish who is experiencing financial hardship so that a small donation may be confidentially made to them. This opportunity will be available each year.

If you know of anyone who lives within Ashover parish and who you think might benefit from such a donation please contact in confidence:

The Ashover Charities Administrator  
Andrew Hardwick  
[hardwickad@gmail.com](mailto:hardwickad@gmail.com)

## ASHOVER COMMUNITY MEDICAL CENTRE LTD (TRUST)

Ashover Community Medical Centre is owned by a community-based trust, Ashover Community Medical Centre Ltd, which leases the surgery to the medical practice. Money was raised to construct the medical centre through fundraising, contributions from local businesses and securing external grants. The current Trustees are Ed Willmot (Chair),

Andrew King (Treasurer) and Jacquie Collins (Secretary).

The funds that are generated from renting the surgery to the doctors are available to be distributed for the benefit of the local community, in accordance with the Trust's charitable objectives. During the past year the Trustees are pleased to have been able to continue to support local activities and causes through the provision of financial assistance. A wide range of activities have received grants from the Trust including Woolley Moor Show, Ashover Seniors for coach trips, Ashover Guides and Rangers, Ashover Cricket Club, Ashover Art Club, the Christmas party, the pantomime, the Christmas lights switch on, the May Day celebrations, Uppertown Social Centre and a defibrillator has been installed at Spitewinter

The Trust awards approximately £10,000 in grants each year. By supporting the many and diverse activities the Trust plays a crucial role in supporting our vibrant and active community. The Trustees would like to encourage any local groups who provide projects or activities in the Ashover area to apply for a grant. Please send any enquiries to the Trust's email address at

[enquiries1acmcl@outlook.com](mailto:enquiries1acmcl@outlook.com)

During the previous year two of our Trustees, Lucy Taylor and Paul Winter, have resigned from their positions. We would like to thank Lucy and Paul for their hard work and contribution to the Trust. We now have two vacancies for the role of Trustee and Director to which we shall be recruiting in the forthcoming months. The posts, which are unpaid, require a commitment to promoting and developing Ashover Community Medical Centre Ltd and commercial approach to running the community-based trust together with an appreciation of the responsibilities of being a director of the company and a trustee of the charity. If you would like to register an interest in the position please email your brief details to the email address above; further information is given below:-

## Ashover Community Medical Centre - Recruitment to the voluntary position of Trustee/Director

Ashover Community Medical Centre Ltd. (ACMCL), which is a company limited by guarantee and a registered charity, is seeking two new Trustees/Directors.

The role of Trustee and Director, which is a voluntary position, is responsible and fulfilling and requires the post holder to act in accordance with the company's articles of association and the trust's deed at all times. Details of how to view these documents can be found below.

In essence the purpose of ACMCL is twofold: to establish equip and maintain the medical centre and to relieve sickness, old age and disability and promote social welfare in the Parish of Ashover and surrounding districts.

When undertaking this role it is important to act with integrity and always to prioritise the aims of the company and trust. In particular an appreciation of the obligations of maintaining a significant local public building and taking a business-like approach are important. Below there is guidance upon the obligations of being a trustee and of being a director.

If you would like any further information regarding these posts please email

[enquiries1acmcl@outlook.com](mailto:enquiries1acmcl@outlook.com)

We very much hope there will be enthusiastic volunteers who can help ensure the ongoing provision of a community medical centre in Ashover.

Ed Willmot - Chair  
Andrew King - Treasurer  
Jacquie Collins - Secretary

### Trust Deed for ACMCL:

<https://register-of-charities.charitycommission.gov.uk/charity-search/-/charity-details/5043601/governing-document>

### ACMCL Articles of Association:

Can be found on Companies House Website

**Government Guidance for Directors:**  
<https://www.gov.uk/guidance/director-information-hub-general-duties>

### Charity Commission

#### – Trustee Guidance:

<https://www.gov.uk/government/publications/the-essential-trustee-what-you-need-to-know-cc3/the-essential-trustee-what-you-need-to-know-what-you-need-to-do>

## ASHOVER MEDICAL CENTRE

Imperial Road, Matlock and Ashover Medical Practices have now been working together since 2018. The COVID years slowed down the desire to progress our plans for change.

Since Covid there have been changes in the General Practice with the introduction of clinical specialists to deliver care to patients in a Primary Care setting. We now have a musculoskeletal practitioner and a clinical pharmacist that patients can book directly with at Ashover. We have also acquired the services of a Mental Health Practitioner who currently works at Matlock two half days per week and Ashover patients can see him at Matlock too.

We have increased our nurse capacity and now there is a nurse at Ashover every day of the week. We are also proud to have GP registrars working at Ashover as part of their training. They are a valuable part of the Practice in ensuring the longevity of General Practice.

We are in the process of changing our telephone system at the request of NHS England so that patients will be able to access our ring back service, avoiding the frustrations of waiting for the phone to be answered, you will be able to press a button and we will ring you back. We are also in the process of investigating the best option for offering on-line triage. This will allow patients to send in their health concerns and this will be assessed by a GP and the most appropriate appointment in the correct timeframe can be offered.

All this we hope adds to the improved services General Practice wishes to offer.

ASHOVER AND IMPERIAL ROAD MATLOCK  
PRACTICE PARTNERS

## ASHOVER SHOW 2024 – 14 AUGUST

For up to date information, please visit  
[www.ashovershow.co.uk](http://www.ashovershow.co.uk)

## BOOK EXCHANGE

There is a book swap facility in the Information Point, situated by the Public Toilets, which is proving to be well used.

Please feel free to bring a book, in good condition, take a book or swap a book to help cut down on waste, encourage recycling and maybe try a book that you wouldn't normally read, without having to leave the village.

No magazines or text books please.

This facility is managed by volunteers.

## BRASS BAND

Ashover Brass Band has continued to thrive under the musical direction of Andy Davy, enjoying good player numbers and engagements throughout the whole of 2023 and into 2024. Playing at Ashover Show where we were bathed in warm and pleasant sunshine was a wonderful experience, as was playing at Woolley Moor show where we were bathed in slightly less warm and pleasant rain! Many thanks again to our wonderful local supporters who continue to attend our performances for our Summer and Christmas performances, as well as come out to see us play carols in the local streets and pubs. Many thanks for your generous donations, which help to keep our charity afloat. We could not survive without your support.

We were saddened to lose our beloved tuba player Albert Turner who played with the band for around 45 years, continuing to play until very recently. He was a testament to how playing brass is good for your health, reaching an admirable 97 years of age. We also lost our former conductor John Slater

and former player Alan Rimmington. We remain a close community and the loss of one of our own is always a sombre moment as we reflect on the wonderful times we have had with our members.

Our chair, John Surguy stood down at the recent band AGM, and Claire Archibald has taken the position. It is a requirement of our constitution that the chair be a resident of Ashover Parish and Claire is looking forward to continuing John's work to promote the charity interests of the band in the parish. The atmosphere at rehearsals and performances is relaxed, supportive and enjoyable and new players are always welcome. We would particularly welcome either new or returning players who reside within Ashover parish- it is the parish band, and we would love you to be a part of it. We have vacancies for tuned percussion players as well as the usual brass instruments. Instruments and uniform are provided (if you can read music but have previously played another instrument, please come and have a go!). Rehearsals are Sundays 7-9 and Wednesdays 7.30-9 in the Parish Hall/Sports Pavilion. Please also give us a 'like' and 'follow' on our social media pages on Facebook and Instagram to keep up with our news.

*Claire Archibald*

CHAIR OF ASHOVER BRASS BAND

## CEMETERY

The Ashover Parish Cemetery is a place used by many to remember their loved ones. It is a place of peace and tranquillity and the Burial Board is dedicated to maintaining the area in a manner that is sympathetic to the surroundings.

Extension E in the Cemetery has successfully been opened for burials. The regulations have been amended to maximise the efficiency of space used, by only allowing consecutive burials. No pre-reservation of space is allowed in the new section.

A Tree Survey was undertaken in May 2024 and a dead Elm tree was identified and removed. An Ash tree was identified to be

monitored again in 2025 when in full leaf. We continuously monitor our tree stocks for safety.

The annual review of cemetery maintenance was undertaken and the current contract with Shed Grounds Maintenance, who are locally based, continues. In the past year this has resulted in an improvement in the general amenity. We carried out various specific improvements to the area by removing ivy and self-set trees. We were assisted in this by a Duke of Edinburgh Award Scheme volunteer who undertook cleaning of War Graves and general tidying within the Cemetery.

Under a separate contract we continue to weed kill the paths and borders to maintain their functionality.

We continue to maintain the Cemetery drive by filling in of pot holes and also the Chapel of Rest by annual cleaning of gutters.

Burial records for Ashover Cemetery are digitised and maintained by the Burial Clerk. Original paper records have been archived. A number of memorials have been repaired and reinstated as part of our on-going programme to preserve the amenity of Ashover Cemetery. Smaller memorials are being stabilised for safety.

A dog waste bin has been provided at the entrance from the Churchyard and 'Dogs on leads' signs placed at the entrances by NEDDC, in accordance with the Public Space Protection Order.

A 'Fees and Charges' list and other documentation for the cemetery may be found on the Parish Council's website at  
[www.ashover-pc.gov.uk](http://www.ashover-pc.gov.uk)

*Cllr Chris Miller*

CHAIRMAN OF THE BURIAL BOARD

## CEMETERY MEMORIAL SAFETY

In accordance with Ashover Parish Council's Memorial Safety Policy (item 3), Notice is hereby given of the intention to inspect all Memorials in Ashover Cemetery during October/November 2024. The Inspection will be undertaken by qualified

Members of Ashover Parish Council's Burial Board in accordance with the Memorial Safety Policy, a copy of which may be viewed at

<https://www.ashover-pc.gov.uk/uploads/p15-memorial-safety-policy.pdf?v=1715772752>

or at [www.ashover-pc.gov.uk](http://www.ashover-pc.gov.uk) and putting 'Memorial Safety Policy' into the search bar.

If you have any concerns, please contact the Parish Clerk.

## CHRISTMAS LIGHTS 2023

On Sunday December 3rd the Parish of Ashover gathered outside the Basset Rooms, singing carols with Ashover Brass Band and the Choir, to observe the parish tree bursting into light, and most importantly, the children had the opportunity to meet a very special person!

This year was even more magical with the addition of the snow, but with snow comes issues, however we managed to all come together to make sure the show still went on. A special mention must be given to our Rector, Reverend Peter Bold, with our Town Crier snowed in, Peter stepped in at the last minute and became our MC for the event.

This year wasn't just the turning on of the lights, it was an opportunity for the parish council to publicly thank our outgoing town crier Merrick Bull. He was presented with an engraved tankard, to commemorate the years of service, laughter, charm and entertainment that he has given to our parish.

Thanks once again goes to Ashover Community Medical Centre Ltd for supporting the event with the purchase of the Christmas Tree. Thanks to our wonderful volunteers, each and every child got to spend time with Father Christmas in the beautiful, and incredibly atmospheric grotto, and told him what they wanted to open on Christmas morning.

A huge thanks goes out to all the volunteers, who gave their time to set up the event, without all those people it would not

be possible.

....and lastly a big thanks goes to Father Christmas who takes time out of his busy schedule to visit at this time each year.

*Cllr Lucy Hunter-Bott*

CHRISTMAS EVENT VOLUNTEER GROUP

## CLIMATE CHANGE & BIODIVERSITY

In recent years there has been increasing focus on Climate issues and in mid-2020, with encouragement from Ashover Parish Council, a Climate Change working group was formed. This group, chaired by Lucy Hunter-Bott, now has 10 members and the main focus has been on - Building efficiency, Utilities, Waste, Outdoor things & biodiversity.

### Building efficiency

On building related matters there was limited scope to influence change as the Parish Council's direct control is limited to the public toilets. Nevertheless, we began collaborating with the teams managing the Parish Hall and the Bassett Rooms to share knowledge and explore scope for climate friendly changes. Recently our discussions have focused on schemes for the installation of solar energy equipment.

### Legislation and the outdoors

In January 2024 the provisions of the Environment Acts 2021/2023 came into force. Briefly, the aim is to “restore nature and improve the environmental quality of the air, our waters and our land”. It's good that The Climate Change Group's existing workstreams on 'Outdoor things' align with the new Acts and the group benefits from an existing dialogue with Derbyshire Wildlife Trust (DWT) for advice and coaching and with NEDDC who have recently recruited specialists to manage their obligations under the new act.

Specific, local initiatives by the group include:

#### 'A wildlife corridor'

We have been working closely with DWT in developing our understanding of a 'Wildlife Corridor' running through the

Parish from the south-east to the north-west. There's a recognised trend of species moving northwards in order to survive in the changing climate. With this in mind, we're following a similar approach to DWT who have been classifying Wildlife Sites according to their profile (eg. Woodland, wetland, meadow, gorse/scrub etc) and we hope to identify this corridor utilising the existing Wildlife Sites whilst filling in the gaps.

As part of this initiative, members of the group are planning on-site meetings with landowners to develop ideas for wildlife/fauna enhancement. This could involve just maintaining the land as it is now or, if desired, come up with some suggestions for habitat improvements/changes.

#### Engagement with the school

We know from our experience of the anti-litter poster campaign, attracting 80 entries (!), that the school are keen to get involved in environmental issues so we're developing some project ideas for discussion this summer.

#### Living Roofs

There are 5 bus shelters around the Parish which are now due for maintenance. Before going ahead with the work we decided to explore the feasibility of installing 'living roofs' – essentially putting wild-flower growing turf on top! The 'Living Roofs' idea was fully investigated but will not proceed – it was felt the costs of installation and maintenance were prohibitive and that the initiative would have less significance in a rural setting like ours.

#### Parish Common Land: Survey by Derbyshire Wildlife Trust

Towards the end of last year we carried out an audit of the Parish Council's 15 parcels of Common Land. The land covers relatively small areas of up to two acres with the terrain varying considerably, mostly disused quarries, copses of woodland and areas of gorse.

As part of the audit we were looking for scope to improve the habitat for wildlife and

fauna.

Unfortunately, the land tends for the most part to be difficult or unsafe to access which limits opportunities. Sometimes the nature of the terrain itself affords limited potential and the optimum solution is just to let nature take its course.

However, we identified three small copses of woodland with apparent potential so we commissioned the Derbyshire Wildlife Trust to carry out surveys. We accompanied DWT's expert and had the benefit of a running commentary which will be supplemented with a follow-up report. Once we have this we'll be developing action plans for each of the three sites.

So, lots to do and we'll provide progress updates in the coming months!

*Cllr Mike Thomas*

## COMMUNITY CAR SCHEME

The scheme covering Chesterfield, Ashover and Amber Valley is supported by the NHS, Derby City and Derbyshire County Council, CT4TC Community Transport for Town and Country. For more information telephone the booking line on [01773 746652](tel:01773746652).

## COMMUNICATION

If you wish to report on events within the parish to the local press, this can be done via the "Grass Roots" section of "The Derbyshire Times" by e-mailing:-

[grassroots@derbyshiretimes.co.uk](mailto:grassroots@derbyshiretimes.co.uk)

## COUNTY/DISTRICT COUNCIL LIAISON MEETINGS

County/District/Parish Liaison meetings/events are held during the year, with presentations and liaison on various issues. Your Parish Council is represented at these meetings.

## CRICKET CLUB

### ASHOVER BARBARIANS CC

Everyone at Ashover Barbarians CC is extremely proud that our cricket club is a thriving village based community club that

is open to all. We have a wide variety of membership from our All Stars at 5yrs old to adult playing members in their 60's. In 2024 we are delighted to add a Ladies softball team to the club which we hope to grow within the local community.

We provide cricket for 5 senior men's teams, 4 junior teams, All Stars and Kwik Cricket, which is astonishing for what is a small village club. We take great pride that many of the players playing in our senior teams have come through our junior section. Our Saturday senior teams compete and hold their own in the Derbyshire County Cricket League and our 1st team regularly play against clubs with overseas or professional paid players.

We would welcome the opportunity to partner with any potential sponsors who could help us to develop our facilities and continue to provide cricketing opportunities for all age groups in a fun and safe environment.

For more information on joining the club or discussing sponsorship opportunities please contact our Chairman on the details below.

*Darren Parkin*

CHAIRMAN, ASHOVER BARBARIANS CC

Tel: 07745 707624

Email: [dparkin@gov2x.eu](mailto:dparkin@gov2x.eu)

## DEFIBRILLATORS

Ashover Parish Council has installed six defibrillators at the following locations:-

- \*Outside Uppertown Social Centre
- \*Outside the medical centre in Ashover
- \*In the red kiosk at Alton
- \*In the red kiosk at Littlemoor
- \*On the side of The Miners Arms, Milltown
- \*On the side of The Kelstedge Inn, Kelstedge

**If you need to use a defibrillators remember -**

**In an emergency, Dial 999 and you will be given the code to the cabinet and further instructions.**

If you would like to know more about how the defibrillators work, visit the parish

council website and put 'defibrillator in use quick reference guide' into the search box at the top right-hand corner of the homepage or paste the following link into your browser:-

<http://www.ashover-pc.gov.uk/uploads/ipad-sp1-in-use-quick-reference-guide-a4-for-web.pdf>

The above guide is also shown at the back of this booklet. Also, look out for 'First Responder' training events at the Parish Hall.

## DOG WASTE DISPOSAL

We have a network of dog waste bins around the parish to encourage considerate behaviour of dog owners. There's a balance to be struck between the positioning of such bins so that they are used versus the cost of providing them. This is an important point because each bin costs approximately £365.00 to install with an associated collection cost of £4.26 per bin and of course this cost is picked up by residents through council tax. At the moment, the annual cost of servicing the bins is over £3,000.00.

With these costs in mind we recently asked NEDDC whether dog faeces could be placed in a general litter bin and, whilst they confirmed this was the case, the Council would prefer this waste be placed in a separate container due to health hazards. This is mainly due to the fact that the smell is contained in a dog waste bin whereas a litter bin is open to the environment. Another factor for NEDDC is that when they dispose of the concentrated waste it aids the tip to separate the waste from general domestic so they are aware during the transfer process to enable them to clean down.

Mostly, general litter bins tend to be situated in locations where the public have a high footfall such as shop precincts, children's playgrounds, outside shops and walking routes where stopping points exist e.g. benches. These are situations where the Council wouldn't encourage dog waste to be

deposited since the receptacle is open and could be unpleasant for those nearby. The Parish Council will consider all the above factors when receiving requests for additional dog waste bins.

## DONATIONS/GRANTS

During 2023/24 your Parish Council donated £713.00 as follows:-

- Matlock & District First Responders - £100.00
- Ashover Senior Citizens Christmas activity - £50.00
- Ashover Brass Band - £50.00
- Ashover Parochial Church Council Christmas Lighting - £25.00
- Ashover All Saints Church Choir Christmas event - £50.00
- Ashover Acorns Play Group Christmas activity - £25.00
- Ashover Footpaths & Bridleways group - £213.00
- NEDDC Ashgate Hospice Appeal - £100.00
- Derbyshire Children's Holiday Centre - £100.00

## EMPLOYEES

Your Parish Council employs two people: Sara Atkinson - Parish Clerk/Responsible Financial Officer/Burial Clerk (23 hours per week) and John Bown - Public Toilet Attendant and Health & Safety Monitor (5 hours per week).

## FOOTPATH AND BRIDLEWAY GROUP

After the wettest winter on record, the paths steadily started to dry out in mid-April, making access around our beautiful parish much more pleasurable. Beginning with Storm Babet on the 20 October, an unprecedented amount of storms have swept through the British Isles causing flooding and widespread damage. Untold trees have fallen across many routes and credit must be given to our local landowners for their prompt clearance of these obstructions.

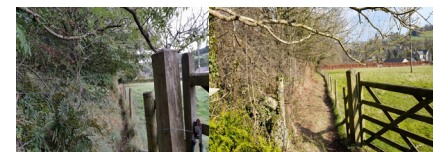
Following our plea for more members, the

Group has been swelled by four enthusiastic recruits and two have taken on roles of the Committee Management team. Two members are testing out the six walks as listed in the booklet Walks around Ashover to check on the condition of the routes. The wooden steps constructed up the steep hillside (by the Thursday volunteer group, many moons ago) on the footpaths from Greenend to the sewage works and Hate Wood to the stepping stones at Butts Quarry, are in a poor state of repair and have been reported to Derbyshire County Council via the online tool for their assessment.

Local volunteers are central to what we do and we are particularly grateful to those outside the parish who help out. These include folk from Clay Cross, Danesmoor and North Wingfield. The Parish Council continues to encourage and support us, especially in work to improve and repair the stone wall from the Bassett Rooms to the Cricket Pavilion, on the boundary of the playing fields.



The Parish Council also provided finance to tackle overgrown hedges on bridleways; Greenend and Salters Lane plus severe undergrowth on footpaths including one above the Rattle and the path running at the back of the Miners Arms, Milltown where self-set blackthorn and bramble had reduced the width of the path, forcing walkers very close to the barbed wire fence.



Before

After

This work was undertaken by the skilled labour force at Bolsover Woodland Enterprise who used heavy cutting machinery to beat the undergrowth into submission. The work was completed by early March. BWE also provide the parish with their superb, rustic benches and a new one was installed at the Highoredish Picnic Site in early November.



## Horse/Cycle Access - Kelstedge Link Path

Following safety concerns for riders trying to cross the main road at Kelstedge from Kelstedge Lane, where visibility is extremely poor, DCC has removed the stone posts on the short path that links to Vernon Lane bridleway where the sight lines at the A632 are much better. Evidently, the posts were erected in the 1970s without due consultation and authorisation and were not evident on the Definitive Map and Statement which is held at the County Offices, Matlock.

## Coach Road, Fallgate to Overton

There have been reports of riders using the pasture land to exercise their horses on rather than keeping to the track on this concessionary bridleway. With the consent of the landowner, two signs have been fitted at either end, near the cattle grids, advising riders to keep to the path. Matlock and District Bridleways Access Group (Madbag) has funded the signs and both events noted above have been circulated on the Facebook page which has around 500 followers.

## Illegal Off-riding

There have been a few sightings of off-road motorbikes accessing bridleways in the Milltown area in the past year, despite clearly sited warning signs. If you happen to see public rights of way being misused in this way, please report to the police via the 101 number.

### DCC Public Rights of Way Maintenance

Back in November, the Group met with the Head officer for PRoW for a site visit around the village. He gave advice about making the footpath from the Bassett Rooms to the cricket pavilion more wheelchair friendly and also examined a tree shedding branches onto the path. He checked out the flood damage on Salters lane, below the Poets, as well as Back Lane and Gin Lane, Milltown. (These paths, along with the footpath that runs from Fallgate to the Miners Arms, close to the bank of the river Amber, were all reported to DCC in October, under the heading 'Storm Babet', as requested by officers in order to obtain central government funding for repairs).

The Head officer also recommended that road drains needed to be kept clear of debris to cope with the sudden deluges that are now occurring due to climate change, after noticing that several drains near The Poets and along Church Street were blocked and these were subsequently cleared.

Nearly six months later, the Head officer has advised that any repairs to paths are likely to take a back seat because of the ongoing problems with potholes along the county's roads due to the extreme wet weather. Vernon Lane bridleway is "on the radar" he says, but budget constraints and lack of resources mean that even capital, ring-fenced projects are being chipped away to try and keep abreast of our failing roads.

### Annual Vegetation Clearance

The Group has requested DCC to change some of the paths its clears during the summer to others we felt were more appropriate including; the continuation of the sports field/show ground path past the cricket pavilion, sections of Abrahams Lane, Salters Lane, Back Lane and Greenend. However, we have been advised that, where once paths received two cuts per year, this year there will only be one.

### Parish Council Minor Maintenance Agreement with DCC

The PC's local contractor continues to keep clear any paths that need extra work in late summer.

### DCC Countryside Sites

The three sites of; Eddlestow Lot, The Fabric and Highoredish, are maintained by the Countryside Service plus volunteers. Very recently, new signs have been erected at the four main access points at The Fabric which state: Help us to check this habitat for wildlife – No cycling or horse riding. It is also well worth remembering that dogs must be kept on a short lead between 1 March and 31 July each year so as not to disturb ground nesting birds and other creatures on these Open Access sites.

### Walking Groups

Two walking groups continue to meet by The Stamp and all are welcome to join them:

The 'all year round' Tuesday morning group meet at 9.30 am.

The Thursday night group meet at 6.30 pm between Easter and August.

A variety of walks are undertaken to suit everyone.

If you would like to know more, please contact either:

Richard Felton – 01246 590 786

Karen Haywood – 01246 590 145

(Karen also volunteers with the British Horse Society as the Access and Bridleways Officer for North Derbyshire).

### GRIT BINS

Your Parish Council owns and fills a total of 37 grit bins sited around the parish and undertakes winter maintenance of the Milken Lane Car Park.

**The salt is supplied for use on the highway adjacent the bin and if you witness large amounts being taken for personal use, please contact the Police.**

Each bin costs £200.00 to provide and £20.00 to fill; during 2023/2024 nearly £1,000.00 was spent on road salt for the grit bins and the car park.

### GROUNDS MAINTENANCE

The maintenance contract with North East Derbyshire District Council continues and includes maintenance and marking out of the playing field, borders surrounding the car park, play area and tennis courts, statutory monthly and annual safety inspections. Pitch bookings administration continues to be undertaken by NEDDC. Your Parish Council approved a further 5 year contract with NEDDC commencing in April 2021. Maintenance costs for the year 2024/2025 will be £16,405.77.

### HARD COURTS

The hard courts, adjacent Milken Lane Car Park, are available for booking at certain times by a club or organisation affiliated to a league at a cost of £6.00 per hour and Floodlight cards are available at £4.00 per card/hour.

Clubs and Organisations may book at the following times:-

- Tuesday - 4pm onwards
- Wednesday - 6pm onwards
- Friday - 6pm onwards
- Sat/Sun - 1pm to 6pm

(The above times change over the winter period, when Club/Organisation bookings may commence at 4pm each evening.)

At all other times and when the courts are not booked, municipal tennis may be played for free.

### HIGH ASHES RURAL PROJECT (HARP)

After a short winter break up at Highashes Community Garden, we've been preparing the beds for spring planting, had a fun mega 'Paint the Shed Session' and the 'Construction Team' have been busy repairing the poly tunnel.



If anybody has any spare garden hand tools such as trowels, hand forks, secateurs etc., we would be extremely grateful.

Contact Penny on  
0785 220 9639

### LITTER PROBLEM ON COUNTRY ROADS

Littering is a nationwide problem and 20 years of poster campaigns, TV adverts and voluntary agreements have had little effect on littering behaviour. Some of the problems caused by littering are:

- Damage to vehicle tyres.
- Harm to wildlife, farm animals and pets – the RSPCA receive on average 7,000 calls a year in relation to animals injured by litter.
- Drain blockages.
- Rat infestation.

In towns and cities the council is obliged to clear problem areas of litter but in rural areas councils don't have the resources to clear miles of country roads – research has shown that one mile of road can contain 147 items of litter. Where communities have taken the initiative and formed groups of volunteer litter pickers 'adopting' a section of road each to keep clear, this has had a big impact on reducing littering and gives the volunteers a real sense of purpose. Please take a look at the CPRE and Keep Britain Tidy websites:

<https://www.cpre.org.uk/>  
<https://www.keepbritaintidy.org/>



## KEEP ASHOVER PARISH TIDY!



**LITTERPICKERS ARE AVAILABLE FOR VOLUNTEERS TO BORROW TO HELP KEEP THE PARISH TIDY!!**

**These have been purchased by Ashover Parish Council for use at your own risk.**

**Litterpickers are available by arrangement on weekdays by telephoning 07752 922593. Please dispose of all rubbish collected responsibly and if you need help, please contact the Parish Clerk.**

### LITTER POSTER COMPETITION 2024

In October 2023 Parish Councillor Jim Daykin put forward a proposal to run an anti-litter campaign in the parish and Members agreed this was a good idea and would assist the many volunteer litter pickers around the parish. We contacted Ashover Primary School and a competition for anti-litter posters was launched with the students. The 'out of school' activity was for 2 age groups, Key Stage 1 and Key Stage 2 and the two winning posters would be printed and displayed at various locations e.g. on the Parish Council website, in Newsletters and in local magazines to promote the 'anti-litter' message. The two winners would each receive a Gift Voucher in the sum of £25.00 and all those entering the competition would receive a bag of jelly sweets as a consolation prize.



The response was excellent with over 80 entries being received.



In Ashover Parish Hall on 19 March 2024, the posters were judged by Barry Lewis (Leader of Derbyshire County Council),

Sue Myhill (Ashover Primary School Head Teacher), Ed Willmot (Ashover Parish Council Chairman) and Jim Daykin (the Parish Councillor who initiated the idea). Altogether there were 80 entries across the two categories and the creativity and enthusiasm evident on each poster meant it was a tough job for the judges to decide the winners. However, they eventually reached their decision and Mrs Sue Myhill, the Head Teacher, presented the prizes to each winner together with consolation prizes for all those entering the competition. Mrs Myhill made the presentations to students during a school assembly.

The two winning entries have been printed as posters and displayed around the parish, and are shown at the back of this booklet.

### LOCAL COUNCIL AWARD SCHEME

In November 2021 Ashover Parish Council received re-accreditation at 'Quality' level, a prestigious award, as part of the Local Council Award Scheme. This achievement recognises that the council achieves good practice in governance, community engagement and council improvement. Moreover, Ashover Parish Council goes above and beyond their legal obligations, leading their communities and continuously seeking opportunities to improve and develop even further.

The Award Scheme report highlighted the council's particular areas of strength, stating: "...you are leading your community and continuously seeking opportunities to improve and develop even further. Therefore the council is to be congratulated immensely."

The Local Council Award Scheme is a peer assessed programme that has been designed to both provide the tools and encouragement to those councils at the beginning of their improvement journeys, as well as promoting and recognising councils that are at the cutting edge of the sector. It is through the sector working together to share best practice, drive up standards and supporting those who are committed to improving their offer to their communities that individual councils and the sector as a whole will reach its full potential.

In terms of the future, the council is now reviewing ways in which it can keep on improving its offer to the local community and welcomes input from local people and partners on this. Ashover Parish Council and other local councils like it, are at the front line of the government's localism agenda and are doing as much as they can to deliver services whilst being efficient and cost effective.

### NEIGHBOURHOOD PLAN

The Ashover Neighbourhood plan, which was approved in 2018, then modified in 2023 to remove a green space, is monitored on an annual basis at the annual council meeting and reviewed in line with the NEDDC Local Plan as and when necessary. The plan is referenced regularly at the council meeting when discussing planning applications and has been used to both oppose and support applications across the Parish.

*Cllr Richard Fidler*

CHAIRMAN, ASHOVER NEIGHBOURHOOD PLAN STEERING GROUP

### NEDDC COUNCILLOR - HELEN WETHERALL

To all the residents who voted me into office last year, thank you. I was overwhelmed to receive 52% of the vote in Ashover Ward and where the turnout was the highest in North-East Derbyshire. That tells me two things; Firstly, that residents were ready for a change and secondly that they believed I could provide change and deliver a good ser-

vice to you all. I hope I am doing both and you will no doubt let me know if you think I'm not or could do more. Genuinely, I wish to speak to any resident who thinks I might be able to help them. For those who didn't vote for me, I am as much your councillor now as anyone else's and again, please do let me know what I can do to help and support you, your family or community. These are some of the things I've been able to achieve:

- Work with the Ashover community group wishing to have average and fixed speed cameras installed on the A632. You may have seen the pieces in the Derbyshire Times on this and I want to thank both the community and Ashover Parish Council for championing safety on this road. We are not there yet, and the fight goes on!
- Support residents through planning challenges. Whilst I am determined to remain completely neutral in planning matters, as I should, there are times when the process seems to be non-sensical and I have helped to navigate residents through the process and arrive at a conclusion that makes sense to all.
- Mediated between parties in circumstances where there has been a breakdown in communication and potential for upset and un-neighbourly conduct. These instances have been few but, in these cases, the impact on people's lives was significant with stress and worry caused. The situations have been resolved and I was happy to see this.
- Assisted with the May Carnival. I helped to support the 'Asher Dash' and was delighted to assist.
- Supported Uppertown social club, attending some very enjoyable evenings.
- Reported highways issues including potholes, flooding, blocked drains and culverts and snow and ice concerns. This is a seemingly endless procession but I'm reporting what I see and what others ask me to report. 2023/24 has been a very busy year and I've learned a lot about the District Council,

how it works and how I can ensure Ashover residents get the very best service from them that's possible. I've also met some fantastic local people who inspire me and are guaranteed to make me smile. Plans for next year include to continue to campaign for additional safety measures on the A632 and to respond efficiently to requests from residents, with solutions delivered where I possibly can.

Ashover Parish is full of decent, lovely people and it is great to get to know people and to hear their stories and wishes for the future. I'm looking forward to getting to know more of you in 2024/25 and thank you for making my first year successful and enjoyable from my point of view.

*Cllr Helen Wetherall*  
NEDDC

### **NEDDC LOCAL PLAN 2014-2034**

The North East Derbyshire Local Plan 2014-2034 was formally adopted by the Council on 29th November 2021 and will be used to guide decisions on planning applications and areas where investment should be prioritised. It covers the area of North East Derbyshire outside the Peak District National Park. PDFs of the Local Plan, Policies Map and related documents are available to be viewed and downloaded on the link below:

<https://www.ne-derbyshire.gov.uk/planning-and-local-plan/planning-policy-and-local-plan/development-plan>

### **NEWSLETTERS**

Your Parish Council issues four Newsletters per year, the first of which is this one, the Annual Report of the Parish Council, which is circulated to every household in the parish and published on the website. The other three Newsletters may be found on the website at [www.ashover-pc.gov.uk](http://www.ashover-pc.gov.uk). If you would like to be included on the mailing list for the newsletter, please let the Parish Clerk know.

You'll find that Ashover Parish Council's web-site ([www.ashover-pc.gov.uk](http://www.ashover-pc.gov.uk)) is pretty

much an information hub for what's going on around the parish. Apart from formal content such as information about the Council, its meetings and Minutes, Planning (including the Neighbourhood Plan). It's through the News section that you'll see bulletins from Derbyshire County Council, North East Derbyshire District Council, Derbyshire Police etc.

If you have any suggestions on ways in which we could improve what we offer we'll of course be pleased to receive them.

### **OIL BUYING SCHEME**

Rural Action Derbyshire (RAD) is a charity set up in 1924 to support rural communities in Derbyshire. One of their current projects is running a community bulk oil buying scheme.

Oil prices are extremely low at the moment which is good news for oil users. RAD can make cheap oil even cheaper through this bulk buying scheme.

The scheme is open to anyone using Kerosene for their heating – households, businesses or community buildings.

There is NO registration or annual membership fee. The scheme is run online where members can register, order and pay for their oil. If you are one of the 20% of rural Derbyshire that do not use a computer or have reliable access to the internet then you can manage your account through the Project Manager at RAD.

There is no obligation to buy your oil through the scheme, you can dip in and out of it depending on your needs. RAD will always be able to negotiate a better oil price than you would be able to arrange with a supplier in the same period due to the quantity they are negotiating with.

RAD orders oil once a month on behalf of their 'members' and negotiate with up to 8 oil suppliers for the best possible price.

For more information on the scheme please contact Project Manager, Emma Simpson on:

01629 592970 / 0845 313 8800

[oil@ruralactionderbyshire.org.uk](mailto:oil@ruralactionderbyshire.org.uk)  
or visit the RAD website:  
[www.ruralactionderbyshire.org.uk/oil](http://www.ruralactionderbyshire.org.uk/oil)  
RURAL ACTION DERBYSHIRE  
Town Hall, Matlock, DE4 3NN.  
Charity No: 1061531

### **PANTOMIME JANUARY 2024**

It is nice to have the opportunity to thank Ashover Village for the huge support that is given for the Annual Pantomime, which this year was 'Aladdin'.

All three nights performances were "full to busting" and this always gives the cast enormous support, together with "fun dialogue" between audience and actors! At the end of September this year we shall again start rehearsing for Pantomime 2025 which will be DICK WHITTINGTON (not forgetting his lovable cat) Our performance nights for Pantomime 2025 will be:-

Thursday 9 January 2025 at 7.15pm

Friday 10 January 2025 at 7.15pm

and Saturday 11 January 2025 which starts with the very popular Parish Party at 5.30PM followed by Dick Whittington at 7.15pm Please come along to one of the shows supporting all the people who work so hard towards the annual Pantomime.

*Cllr Rosemary Early*

### **PARISH APPEARANCE/MAINTENANCE**

The flowerbeds adjacent 'The Black Swan' and the public toilets are maintained under contract for the Parish Council. Volunteers continue to pick litter around the parish and fly tipping is reported promptly to the District Council.

### **PARISH COUNCILS AND MEETINGS**

Parish councils and parish meetings work towards improving community well-being and providing better services at a local level. Their work falls into three main categories:

- representing the local community;
- delivering services to meet local needs; and
- striving to improve quality of life in the

community.

Through a range of powers, parish councils provide and maintain a variety of important and visible local services including allotments, bridleways, burial grounds, bus shelters, car parks, commons, community transport schemes, crime reduction measures, footpaths, leisure facilities, local youth projects, open spaces, public lavatories, planning, street cleaning, street lighting, tourism activities, traffic calming measures, village greens and litter bins.

Residents are welcome to attend and speak at Parish Council Meetings under the 'Public' section. Parish Council Meetings are held on the third Tuesday of every month (except August when no meeting is held) in The Sports Pavilion, Milken Lane, Ashover and commence at 7.00pm. Public Speaking is invited for the first fifteen minutes at each meeting, when anyone from the parish may raise any issue with the Parish Council. A copy of the Agenda, together with notification of planning applications, Parish Clerk's Report, Minutes of the previous meeting and other information may be found on the Parish Council website:

[www.ashover-pc.gov.uk](http://www.ashover-pc.gov.uk) and the main notice board on Moor Road. A summary of each meeting is published in 'The Derbyshire Times' "Grassroots" section and is also available on the Parish Council website along with other press releases.

### **PARISH COUNCIL SURGERIES**

These are presently held at 6.45pm for fifteen minutes prior to most Parish Council Meeting. Parishioners are encouraged to attend and express any concerns they may have on parish issues to a Parish Councillor and the Parish Clerk if they are unable, or do not wish, to attend and speak at the main meeting under 'Public Speaking'.

### **PARISH HALL CIO**

We would like to thank the local community, our regular hirers and trustees for their continued support over the last year.

Our function rooms have been chosen to hold a wide variety of events and regular classes (some of which you also may like to join yourself!).

Our fortnightly warm hub coffee morning is proving popular with hot sausage rolls and home bakes a big hit. The hall is open every 2nd and 4th Tuesday of the month from 10-12 and everyone is welcome. Access to free WIFI and dog friendly. All profits go to our chosen charity.

Fitness classes currently held with us include Yoga with Jenny Meadows, a yoga class with Debbie Neath, Karate with Mike Douglass and Wingerworth Fencing. Pilates with Liz on Tuesday has literally gone from strength to strength with new members welcome at either of her 2 classes!

Other regular groups include Produce Club, Indoor bowls, Parish Panto, Ashover Seniors, Ashover Art Group, Ashover Brass Band and Young Farmers.

Wednesday morning's host 'Tots & Tinies playgroup' where parents and carers have a well-deserved cup of tea whilst the children have a wide variety of toys, organised activities and songs to keep them busy! Now ran by Angela, the group is expanding with excellent activities weekly.

For the older children - Ashover Brownies now meet weekly at 6pm (term time) in our Amber Hall, followed by Guides & occasionally Rangers at 7pm.

For those with a creative flair, Jonathan Moseley who is one of the UK's leading designers in the floral art world has many classes and workshops booked through the year.

All groups are open to new members and support.

We would be happy to provide you with further information on any of these existing groups, as well as offering advice and assistance with marketing should you wish to start a new class yourself.

Please take a look at our website [www.ashoverparishhall.com](http://www.ashoverparishhall.com) or social media pages (Facebook & Instagram) which provides

information on hiring the hall and photos for inspiration with your own event.

We have as always had the pleasure of hosting many wonderful weddings, birthday, life and anniversary celebrations. We have also supported Ashover Primary School & Eastwood Grange with their stage performances & shows.

In 2023 the hall supported Helen's Trust, raising £900 to support the great cause. It was agreed that in 2024 we would continue to support them through our coffee mornings, raffles and events.

2024 sees the hall hosting some great events, an Art Festival on May Day, Quiz and Disco night in May, Spring Fair in June, Food Festival in September & Christmas Family Party in December. Please keep a look out on our website, social media and notice boards for information on our events.

We are always looking for new trustees, so if you are interested please call in and find out what its all about.

If you would like our help to create the perfect event or celebration, please get in touch:

Tel: 01246 590005

Email: [info@ashoverparishhall.com](mailto:info@ashoverparishhall.com)

Website: [www.ashoverparishhall.com](http://www.ashoverparishhall.com)

*Manager*

ASHOVER PARISH HALL EVENTS CENTRE

## PLANNING

Your Parish Council is one of several consultees whose comments are sought by the District Council on planning applications. Unless applications are received after agenda issue, those to be considered by the Parish Council are listed on Appendix I which is published with the agenda and posted on the main notice board and on the website. Applicants are encouraged to address the Parish Council, either in person or in writing, when their application is to be considered. Details of all applications, including associated documents, may be found on the District Council's website at [www.ne-derbyshire.gov.uk](http://www.ne-derbyshire.gov.uk)

## POTHOLES, PAVEMENTS & OTHER PROBLEMS

Derbyshire County Council has a facility for reporting problems with potholes, pavements, flooding, gritting, street furniture etc. Visit the DCC homepage at [www.derbyshire.gov.uk](http://www.derbyshire.gov.uk) and click on 'report a road fault' etc. then follow the links to the online fault reporting form. After entering details, including an opportunity to upload a photo of the problem, you will be given a reference number, enabling you to keep track of action taken by DCC.

## PUBLIC SPACE PROTECTION ORDER (PSPO)

Dog mess is unfortunately an unpleasant aspect of dog ownership. It is every owner's duty to clean up after their dog – there is no excuse for leaving it behind.

North East Derbyshire District Council is committed to ensuring that dog owner's act in a responsible way.

Enforcement of the PSPO was delayed due to the coronavirus pandemic. As well as introducing a number of new offences relating to dog control, the fine for failing to clear dog mess will be increased to £100.

Residents should be encouraged to report breaches of the PSPO to the council via telephone to 01246 231111

or email to

[environmentalhealthadmin@ne-derbyshire.gov.uk](mailto:environmentalhealthadmin@ne-derbyshire.gov.uk)

and the dog wardens will investigate, issuing fines if necessary.

For more information on PSPO's etc. visit <https://www.ne-derbyshire.gov.uk/environmental-health/animals-and-pests/dog-management-pspo>

## REMEMBRANCE SUNDAY – 12 NOVEMBER 2023

Councillor Ed Willmot laid a Poppy Wreath on the War Memorial on behalf of the Parish Council and Ashover Parish following a service in All Saints Church. Ashover Parish

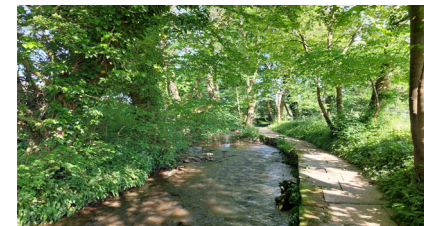
Council displayed poppies around the parish to mark the Remembrance.

## RIGHTS OF WAY

These are ultimately controlled and maintained by Derbyshire County Council. The Parish Council undertakes minor works via its Minor Maintenance Agreement (MMA) with DCC. If you wish to report any issues relating to rights of way there is an online facility at [www.derbyshire.gov.uk/prow](http://www.derbyshire.gov.uk/prow) Furthermore, you can view the entire rights of way network by visiting the Council's website and searching for 'Mapping Portal' where visitors can view a wealth of information, including Rights of Way. Information relating to Modification Orders may be viewed here:

<https://apps.derbyshire.gov.uk/applications/right-of-way/>

## RIVER AMBER



Judging by the volume of recent press articles, the clean-up of the UK's rivers is progressing at a glacial pace. Our own local experience is similar.

In November 2022 it was agreed at a local meeting of stakeholders (incl Environment Agency (EA), Severn Trent, MP & Parish Council) that the EA would carry out monitoring of the Amber to assess the impact of Severn Trent's operations on the river. To this end, sondes (water quality sensors) were installed upstream and downstream of the Ashover Sewage Treatment Works for the period Feb – April 2023. The data collected showed no difference in water quality upstream and downstream of sewage treatment works so in May/June 2023 the sondes were deployed

upstream of Kelstedge STW to further pinpoint potential sources of pollution. Arising from this data analysis, the EA carried out a series of farm inspections, in the upper Amber catchment, for their compliance with regulations which include controls on pollution of Water Sources from Silage, Slurry and Agricultural Fuel Oil.

Improvement plans were discussed with farmers and guidance given on record keeping for soil analysis/Nutrient Management plans and clean and dirty water separation. EA's programme of inspections will continue during the 2024/2025 period.

It was very helpful that EA sent representatives to our Public Meeting on 9 May 2024. Apart from answering questions from parishioners, the EA talked about some of the resourcing pressures and how this has impacted their activities. In recent announcements from the Government, funding has been increased to provide for more Officers. This is especially important in Enforcement where, owing to scarcity of resources, enforcement has gone down in recent years. In the future, EA said there would be much more emphasis on enforcement and the appointment of more officers will allow for more company inspections.

Unfortunately, Severn Trent declined to attend the recent Public Meeting: this was very disappointing and the provision of a statement was a poor substitute. In this statement they pointed out that, of the eight reasons why the river near Ashover is not at Good status, they are responsible for only one of them.

Severn Trent have committed to getting this one-eighth of the harm to the River Amber down to zero by 2030. Meanwhile, there's a local perception that the existing holding tank capacity for Ashover is inadequate and this is an issue we'll (again) be raising with Severn Trent later in the year when they announce their investment programme for the 2025 – 2030 period.

For their part, Severn Trent have said that

they hope to be able to work constructively with the Parish and others on these and other issues affecting the river. They have also said they hope to have the opportunity to brief the council once they have finalised their own investment plans for the River Amber and we will hold them to that.

Finally, we're grateful to Lee Rowley and his team for their prominent support in the dialogue with the Environment Agency and Severn Trent.

#### **If you witness any pollution of the river, please report this immediately to:**

0800 807060 - 24 hours a day

<https://www.gov.uk/report-an-environmental-incident>

*Cllr Mike Thomas*

#### **SCAMS AND CYBER SECURITY**



Derbyshire Police has issued the following advice on how to better protect yourself against unwanted calls:-

- Be sceptical
- Take your time
- Know who you are dealing with
- Protect your financial information

If you want assistance in finding out if it is a scam contact Consumer Direct on

08454 04 05 06.

If you want to cut the junk contact:-

Mailings - 0845 703 4599 or [www.mpsonline.org.uk](http://www.mpsonline.org.uk) (Registration is free)  
Telephone Calls - 0845 070 0707 or [www.tpsonline.org.uk](http://www.tpsonline.org.uk) (Registration is free).

You can also contact your telephone company to block callers who withhold their number.

Text/SMS - 0845 070 0707 or [www.tpsonline.org.uk](http://www.tpsonline.org.uk). If you then receive a message you don't want you can reply with the word STOP.

Email - if you would like advice go to [www.getsafeonline.org](http://www.getsafeonline.org)

#### **SPEED AWARENESS**

In 2014, eleven parish councils in the North East Derbyshire area clubbed together to provide a speed camera for police to use in a joint bid to make local roads safer.

Ashover, Brampton, Heath and Holmewood, Morton, North Wingfield, Pilsley, Shirland and Higham, Stretton, Sutton cum Duckmanton, Tupton and Wingerworth parish councils have all contributed to the campaign and provided funding for the camera and its maintenance. The camera is deployed, on average, once a week in one of the partnership parishes. Police Officers using the device informed councils that it is an excellent tool in tackling the issues of speeding in our areas.

To contact your local Safer Neighbourhood policing team: call 101 or

visit [www.derbyshire.police.uk](http://www.derbyshire.police.uk)

#### **SPEED AWARENESS - 12 MONTH TRIAL OF SPEED INDICATOR DEVICE'S (SIDS)**

The 12 Month Trial of the Speed Indicator Device's (SID) has started and July will provide us with our 5th month of data.

The two SID's are situated at Kelstedge on the A632, one facing vehicles coming from Chesterfield and One facing vehicles coming from Slack Hill.

The Speed Indicator Devices are part of a county wide trial. Whilst there is currently little evidence that these devices on their own are an effective solution, it is providing us with the evidence of excessive speed through Kelstedge, demonstrating the necessary move to additional measures being introduced.

We are recording some alarming speeds along the A632, something we have all witnessed on a day to day basis. Each month the data is downloaded just before our monthly Parish Council meeting. The data is then analysed and a condensed report is written. This is then shared with the parish and sent to highways. The full data can be obtained from the Parish Clerk, should anyone wish to have sight of it.

It is the first time we feel, as a Parish Council, that we have an opportunity to take a bit of control and monitor the speeds ourselves, to be able to report back to the Derbyshire County Council Highways with actual data of our own, rather than relying on other sources.

Whilst the SID's have taken priority to get them installed, the Parish Council has been engaging in a number of other schemes by supporting a Casualty Reduction Enforcement Support Team (CREST) initiative by volunteers with funding of £425.00 for purchase of equipment etc. and, as part of an Automatic Number Plate Recognition (ANPR) pilot scheme by the Police & Crime Commissioner, we have put forward the A632, this is on-going and we await the outcome.

We called the first Public Meeting in September 2022 as requested by the Parish and this year saw a follow-up Public Meeting in May with all interested parties. This was really well supported and we thank those who came along to put their points across to demonstrate the significant concerns we have regarding the A632.

We all agree that something needs to be done, we continue to listen to our parish and liaise with our MP, Highways, DCC Leader and Cabinet Member, Police and action group via the District Councillor, to find a better solution for the A632.

*Cllr Lucy Hunter-Bott*

#### **STREET FURNITURE/PROPERTY**

A rolling programme continues to operate for the maintenance of parish owned street furniture, including parish seats, bus shelters and notice boards and parish owned property. Risk assessments and inspections have been undertaken in accordance with legal requirements.

#### **SUBSCRIPTIONS**

Your Parish Council continues to subscribe to the Derbyshire Association of Local Councils (DALC) and the Institute of

Cemetery & Crematorium Management (ICCM) on an annual basis. DALC offers free legal and professional advice on all aspects of parish and town council business backed up by experts at NALC (National Association of Local Councils) and regular information circulars. Likewise ICCM also offers free advice to its members and regular newsletters.

### TENNIS CLUB

Ashover Tennis Club meets on Friday evenings from April to October for social tennis, and also runs teams in the Derby and District league. We are always looking for new players - all standards welcome. For further details please contact the Membership Secretary via email:

[elliessalomoni@aol.com](mailto:elliessalomoni@aol.com)

### TRUSTED TRADER SCHEME (Derbyshire County Council)

Finding a company that you can trust to do some work for you can be a bit daunting – how can you be sure that you won't get ripped off? What if things go wrong? How do you choose between lots of different companies? These sorts of dilemmas were a driving force behind the setting up by Derbyshire County Council of the Trusted Trader scheme to help local people find traders and businesses that do a good job at a fair price and provide good customer service.

That was back in 2008 and the popular scheme has gone from strength to strength. These days there are nearly 17,000 searches each month on the Trusted Trader website, [www.derbyshire.gov.uk/tt](http://www.derbyshire.gov.uk/tt) by people looking for reliable companies to use. Another ringing endorsement for the scheme was a recent survey which gathered feedback from more than 16,000 people who had used a Trusted Trader and an impressive 94% said they were very satisfied with the service they received.

So people can have lots of confidence when employing one of the 1,200 traders who are part of the scheme. In the very unlikely event of someone having a problem with one of

the traders then help is at hand. Derbyshire County Council trading standards officers can get involved in any queries involving Trusted Traders and seek to resolve them.

The scheme particularly helps to protect older and vulnerable adults by making it easier for them to use Trusted Traders rather than rogue traders who typically cold-call and use high pressure sales techniques. A recent development has been the inclusion of Financial Advisors who specialise in providing financial advice for people in later life and can help with matters like care fees, pensions and investments.

Find out more about all aspects of Trusted Trader at:

[www.derbyshire.gov.uk/tt](http://www.derbyshire.gov.uk/tt)  
or call 01629 536148

Enquiries are also welcome from businesses interested in signing up to the scheme.

### UPPERTOWN SOCIAL CENTRE



The Centre provides a first class facility for social activities for the people of Ashover and surrounding areas. It has comfortable and up to date facilities for parties, birthdays, weddings and other special occasions but is equally suited to conferences, training sessions or meetings.

Facilities include:

- Licensed bar
- Fully fitted kitchen for outside caterer or hirer use
- Function room for up to 120 people
- Car parking for 25 cars (this area can be used to erect a marquee)

The Centre is run on a not for profit basis

as a charity, which would not be possible without the committee of local people and a group of willing volunteers.

For information on events visit:

[www.uppertown.org](http://www.uppertown.org)  
or call 07966 154798

UPPERTOWN SOCIAL CENTRE

Registered Charity Number: 1023876

### WASTE RECYCLING (Derbyshire County Council)

Household Waste Recycling Centres (or Civic Amenity Sites) are provided by the county council for the disposal of waste produced from households which is either too large or too bulky to be accepted by the normal district council weekly collection. Your nearest site is located at Stonegravels, Sheffield Road, Chesterfield which has full recycling facilities. The site is open seven days a week from 8.30am – 6.00pm (closed 25/26 December and 1 January).

Contact 'Call Derbyshire' by:

calling 01629 533190  
or texting 86555

DERBYSHIRE COUNTY COUNCIL

### WOMEN'S INSTITUTE – A REGISTERED CHARITY

Ashover WI has had another busy and interesting year, offering members a range of speakers. There have been a wide variety of topics on offer from 'Running the Marathon de Sable' across the Sahara Desert in Morocco to 'A Year on My Allotment'. We had a 'bring and share' supper to celebrate the Coronation (together with a best crown competition) and trips to Felley Priory with afternoon tea, and the National Arboretum. In addition to the meetings, there are several lively WhatsApp Groups where members get together for coffee in out of village locations, and a craft group who meet for knitting, sewing or just nattering. There's even a gin club, and seasonal walking and gardening groups also on offer.



One of the aims of the WI is to support local charities and communities. Each month members make monthly provision donations to Clay Cross Food Bank. The Refreshments served on May Day last year in the Bassett Rooms raised £1000 and enabled us to make donations to both the Food Bank and Ashgate Hospice. The churchyard bench was renovated in the Summer and the front flower bed at the Bassett Rooms planted and maintained by WI volunteers.

Meetings are held on the second Thursday each month at 7.30 in the Bassett Rooms.

Our members range in ages and backgrounds and share a common goal of friendship and exploration. Visitors are welcome to attend – posters around the village advertise the monthly speaker – or visit our Facebook page.

**WEBSITE – [www.ashover-pc.gov.uk](http://www.ashover-pc.gov.uk)**

Your Parish Council’s website is [www.ashover-pc.gov.uk](http://www.ashover-pc.gov.uk) and is the gateway into the parish council and numerous local services, from there you can also find links to other organisations including North East Derbyshire District Council and Derbyshire County Council.

The site contains, along with many other things, items of news, advice of road closures in the parish, links to leisure facilities, you can even have a look at your Parish Councillors and Parish Council staff. There are links to your Local Councillor, District Councillor and Member of Parliament.

There are calendars for council meetings and events and leisure activities taking place in the Parish.

There are forms to report problems and issues within the Parish, there is an A-Z link where there is a whole raft of information about the Parish, County and District Councils.



Why not have a look at it at [www.ashover-pc.gov.uk](http://www.ashover-pc.gov.uk) you can also find us on Facebook and X (formerly Twitter).



If you’re viewing this on a digital device, just click the above images to be directed straight to the website or social media page!

**FINANCIAL REPORT  
PRECEPT 2024/2025**

At the Parish Council meeting held on 17 October 2023, consideration was given to the recommendations of the Finance Working Group for the precept application for 2024/25.

The Finance Working Group had deliberated each code and cost centre in the accounting system, recognising the need to limit expenditure as far as possible due to current restraints and economic climate and taking into account a realistic income figure. The Capital Assets Renewal Programme continued to be included in the precept sum and this would be revised to reflect ongoing capital expenditure and to include new capital purchases. Members recognised the requirement to retain 35-50% precept reserves at all times, whilst being aware of access to earmarked reserves. Projected reductions, increases and adjustments were made to previous budget figures and having deliberated the budget for the Financial Year 2024/2025, an anticipated realistic income figure of £11,090.00 set against an anticipated expenditure figure of £93,170.00 plus earmarked reserves of £12,307.00, produced

an annual Precept figure for 2024/2025 of £94,387.00. This represents an increase of £4,632.00 (5.2%) on 2023/2024.

| COST CENTRE            | ANTICIPATED FIGURES |               |                |               |
|------------------------|---------------------|---------------|----------------|---------------|
|                        | Exp. 2023/24        | Inc. 2023/24  | Exp. 2024/25   | Inc. 2024/25  |
|                        | £                   | £             | £              | £             |
| Administration         | 38295               | 2095          | 38235          | 2420          |
| Section 137            | 750                 | 0             | 600            | 0             |
| Pavilion/Courts        | 275                 | 550           | 280            | 550           |
| Public Toilets         | 2680                | 0             | 3150           | 0             |
| Capital Projects (EMR) | 12195               | 0             | 12307          | 0             |
| Allotments             | 300                 | 120           | 300            | 120           |
| Cemetery               | 15450               | 10000         | 15800          | 8000          |
| Parish Maintenance     | 32575               | 0             | 34805          | 0             |
| TOTALS                 | 102520              | 12765         | 105477         | 11090         |
| PRECEPT                | <b>2023/24</b>      | <b>£89755</b> | <b>2024/25</b> | <b>£94387</b> |

## Summary Receipts & Payments Year Ended 31 March 2024

(Awaiting External Audit)

| Year Ended<br>31 March 2022 |                       | Year Ended<br>31 March 2024 |
|-----------------------------|-----------------------|-----------------------------|
| <b>Receipts</b>             |                       |                             |
| 89755.00                    | Precept Received      | 89755.00                    |
| 612.17                      | Interest Received     | 2609.82                     |
| <b>90367.17</b>             | <b>Total</b>          | <b>92364.82</b>             |
| <b>Operating Income</b>     |                       |                             |
| 11636.54                    | Administration        | 9304.00                     |
| 1562.95                     | Pavilion              | 1411.00                     |
| 60.00                       | Allotments            | 120.00                      |
| 16720.00                    | Cemetery              | 8648.45                     |
| 12100.96                    | VAT                   | 10977.20                    |
| <b>132447.62</b>            | <b>Total Receipts</b> | <b>122825.47</b>            |
| <b>Running Costs</b>        |                       |                             |
| 32608.34                    | Administration        | 37561.25                    |
| 610.00                      | Section 137           | 713.00                      |
| 100.00                      | Other Grants          | 0.00                        |
| 304.79                      | Pavilion              | 297.00                      |
| 3917.54                     | Toilets               | 3264.27                     |
| 12570.08                    | Capital Projects      | 9515.65                     |
| 262.48                      | Allotments            | 235.41                      |
| 14587.68                    | Cemetery              | 11814.14                    |
| 36265.45                    | Parish Upkeep         | 36301.98                    |
| 11568.80                    | VAT on Payments       | 11541.98                    |
| <b>112795.16</b>            | <b>Total Payments</b> | <b>111244.68</b>            |

## Summary Receipts & Payments Year Ended 31 March 2024

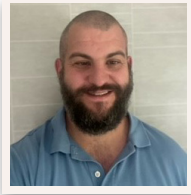
(Awaiting External Audit)

| Year Ended<br>31 March 2023             |                          | Year Ended<br>31 March 2024 |
|---|--------------------------|-----------------------------|
| <b>Receipts &amp; Payments Summary</b>  |                          |                             |
| <b>134422.06</b>                        | <b>Opening Balance</b>   | <b>154074.52</b>            |
| 132447.62                               | Add Total Receipts       | 122825.47                   |
| 266869.68                               |                          | 276899.99                   |
| 112795.16                               | Less Total Payments      | 111244.68                   |
| <b>154074.52</b>                        | <b>Closing Balance</b>   | <b>165655.31</b>            |
| <b>Cumulative Funds represented by:</b> |                          |                             |
| 47737.70                                | Current/Reserve Account  | 58495.76                    |
| 106336.82                               | National Savings Account | 107159.55                   |
| <b>154074.52</b>                        |                          | <b>165655.31</b>            |

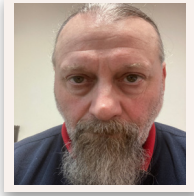
## YOUR PARISH COUNCILLORS



John Cook  
Farhill House  
Milken Lane  
Ashover  
CHESTERFIELD  
S45 0BB  
07803 230702



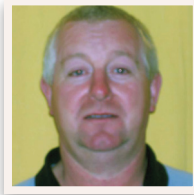
Edward Hayward  
62 Malthouse Lane  
Ashover  
CHESTERFIELD  
S45 0AL  
07793 407911



Jim Daykin  
Eastwood Cottage  
Ashover Road  
Littlemoor  
CHESTERFIELD  
S45 0BL  
07791 340214



Lucy Hunter-Bott  
Old Bank House  
Butts Road  
Ashover  
CHESTERFIELD  
S45 0AX  
07976 733607



Steve Dronfield  
Willow Tree Farm  
Hungerhill Lane  
Stonedge  
CHESTERFIELD  
S45 0LP  
01246 590721



Chris Miller  
Hill House  
Hill Road  
Ashover  
CHESTERFIELD  
S45 0BX  
01246 590253



Rosemary Early  
Lexley Gables  
Hockley Lane  
Ashover  
CHESTERFIELD  
S45 0ER  
01246 590738



Mike Thomas  
Touchstone  
Chapel Hill  
Ashover  
CHESTERFIELD  
S45 0AT  
07885 201296

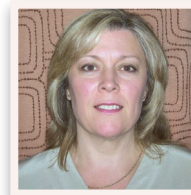


Richard Fidler  
Porthlea  
Alton Lane  
Littlemoor  
Ashover  
CHESTERFIELD  
S45 0BE  
01246 590155



Ed Willmot  
The Pines  
Hill Top Road  
Ashover  
CHESTERFIELD  
S45 0BZ  
01246 590260

## YOUR PARISH COUNCIL STAFF



Sara Atkinson  
Parish Clerk & RFO  
The Sports Pavilion  
Milken Lane  
Ashover  
Chesterfield S45 0BA  
01246 863018  
[parishclerk@ashover-pc.gov.uk](mailto:parishclerk@ashover-pc.gov.uk)



John Bown  
Health & Safety  
Monitor/  
Toilet Attendant

## YOUR COUNTY AND DISTRICT COUNCILLORS



Barry Lewis  
DCC Councillor  
2 King George Street  
Wessington  
Derbyshire  
S55 6DZ  
01773 830871  
07920484207



Helen Wetherall  
NEDDC Councillor  
Woodside  
Ashover Road  
Ashover  
CHESTERFIELD  
S45 0EU  
07429 365009



For information and help on the following services, please call the appropriate authority (details at the right of this page) or visit [www.ashover-pc.gov.uk](http://www.ashover-pc.gov.uk) and click on the A-Z of services :-

|                                      |                |
|--------------------------------------|----------------|
| Bulk Waste Collection Service        | <b>NEDDC</b>   |
| Bus Shelters                         | <b>APC</b>     |
| Car Park (Milken Lane)               | <b>APC</b>     |
| Cemetery (Ashover)                   | <b>APC</b>     |
| Council Tax                          | <b>NEDDC</b>   |
| Common Land                          | <b>APC</b>     |
| Dog Waste Bins                       | <b>APC</b>     |
| Dog Wardens                          | <b>NEDDC</b>   |
| Education                            | <b>DCC</b>     |
| Energy Advice Centre                 | <b>NEDDC</b>   |
| Environmental Health                 | <b>NEDDC</b>   |
| Fly Tipping                          | <b>NEDDC</b>   |
| Grit Bins                            | <b>APC/DCC</b> |
| Highways                             | <b>DCC</b>     |
| Housing                              | <b>NEDDC</b>   |
| Libraries                            | <b>DCC</b>     |
| Licensing                            | <b>NEDDC</b>   |
| Parish Plan (Ashover parish)         | <b>APC</b>     |
| Parish Seats                         | <b>APC</b>     |
| Pest Control                         | <b>NEDDC</b>   |
| Planning Permission                  | <b>NEDDC</b>   |
| Play Area (Ashover)                  | <b>APC</b>     |
| Playing Field/Hard Courts (Ashover)  | <b>APC</b>     |
| Potholes                             | <b>DCC</b>     |
| Public Toilets                       | <b>APC</b>     |
| Recycling (inc. blue box/bag scheme) | <b>NEDDC</b>   |
| Refuse Collection                    | <b>NEDDC</b>   |
| Reg. of Births, Deaths, Marriages    | <b>DCC</b>     |
| Register of Electors                 | <b>NEDDC</b>   |
| Rights of Way (footpaths/bridleways) | <b>DCC</b>     |
| Social Services                      | <b>DCC</b>     |
| Street Cleaning                      | <b>NEDDC</b>   |

|                         |            |
|-------------------------|------------|
| Street Lighting Repairs | <b>DCC</b> |
| Trading Standards       | <b>DCC</b> |
| War Memorial            | <b>APC</b> |

#### **NEDDC**

North East Derbyshire District Council  
2013 Mill Lane  
Wingerworth  
Chesterfield  
S42 6NG  
Tel: **01246 231111**

#### **DCC**

Derbyshire County Council  
County Hall  
Matlock  
DE4 3AG  
Tel: **01629 533190**

#### **APC**

Ashover Parish Council  
The Sports Pavilion  
Milken Lane  
Ashover  
Chesterfield  
S45 0BA  
Tel: **01246 863018**

## **EMERGENCY SERVICES**

**Always dial 999 in case of an emergency**

### **Derbyshire Police**

101 (calls to report crime, anti-social behaviour, non-violent crime or general information)

Please note: You **MUST** continue to use **999** where a crime is in progress, for serious crime or where violence is being used.

### **Derbyshire Fire & Rescue**

Administrative and fire safety enquiries:  
**01332 771221**

### **Power and supplies**

Electricity: Central Networks (emergency) **0800 056 8090**

Gas (emergency) **0800 111 999**

Severn Trent Water (emergency)

**0800 783 4444**

or **0845 9881188** (flooding)

National Floodline

**0845 988 1188**

### **Hospitals/medical**

NHS **111** is a service to make it easier for you to access local NHS healthcare services in England. You can call **111** when you need medical help fast but it's not a **999** emergency. NHS **111** is a fast and easy way to get the right help, whatever the time.

NHS **111** is available 24 hours a day, 365 days a year. Calls are free from landlines and mobile phones.

Royal Derby Hospital

**01332 340131** - Main switchboard

Chesterfield Royal Hospital

**01246 277271**

Buxton Hospital

**01298 214000**

## **INFORMATION AND HELP**

[Derbyshire County Council](#)

**01629 533190**

[North East Derbyshire District Council](#)

**01246 231111**

[Citizens Advice Bureau Advice line](#)

**03444 111 444**

### **Louise Jones MP - Parliamentary**

#### **Constituency**

Office of Louise Jones MP

Parliamentary office

House of Commons

London

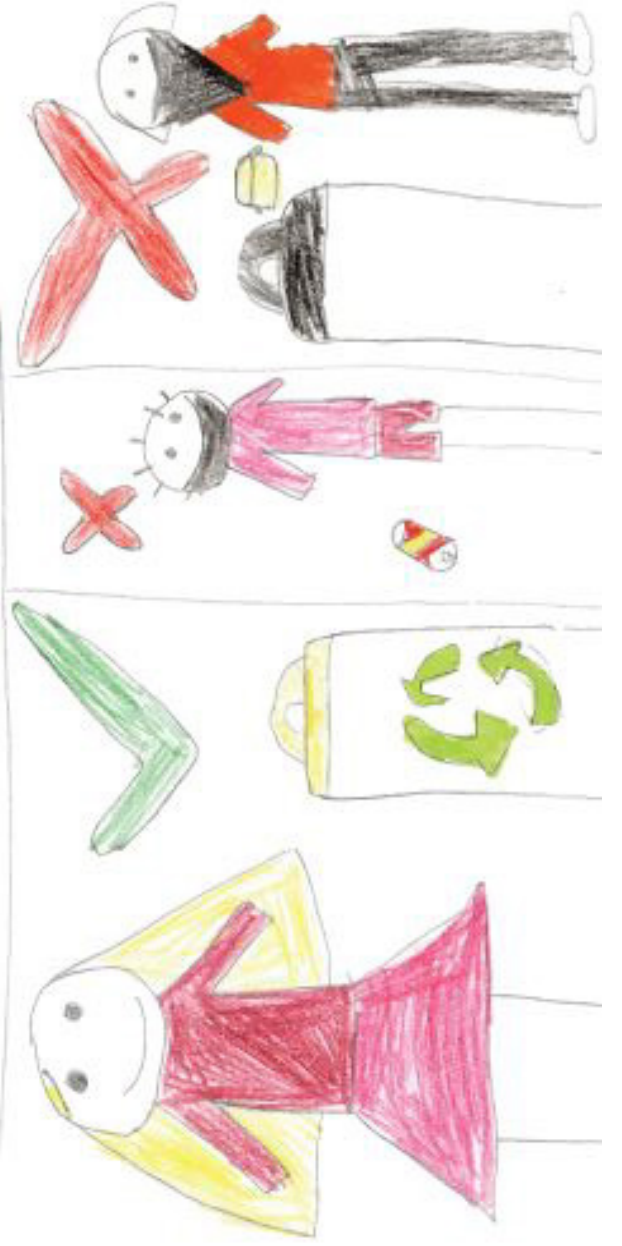
SW1A 0AA

Email: [louise.jones.mp@parliament.uk](mailto:louise.jones.mp@parliament.uk)

Website: [louisejones4ned.co.uk](http://louisejones4ned.co.uk)



Do Not Litter







Ashover  
Community First

© Ashover Parish Council  
July 2024

---